


**NOTES:**

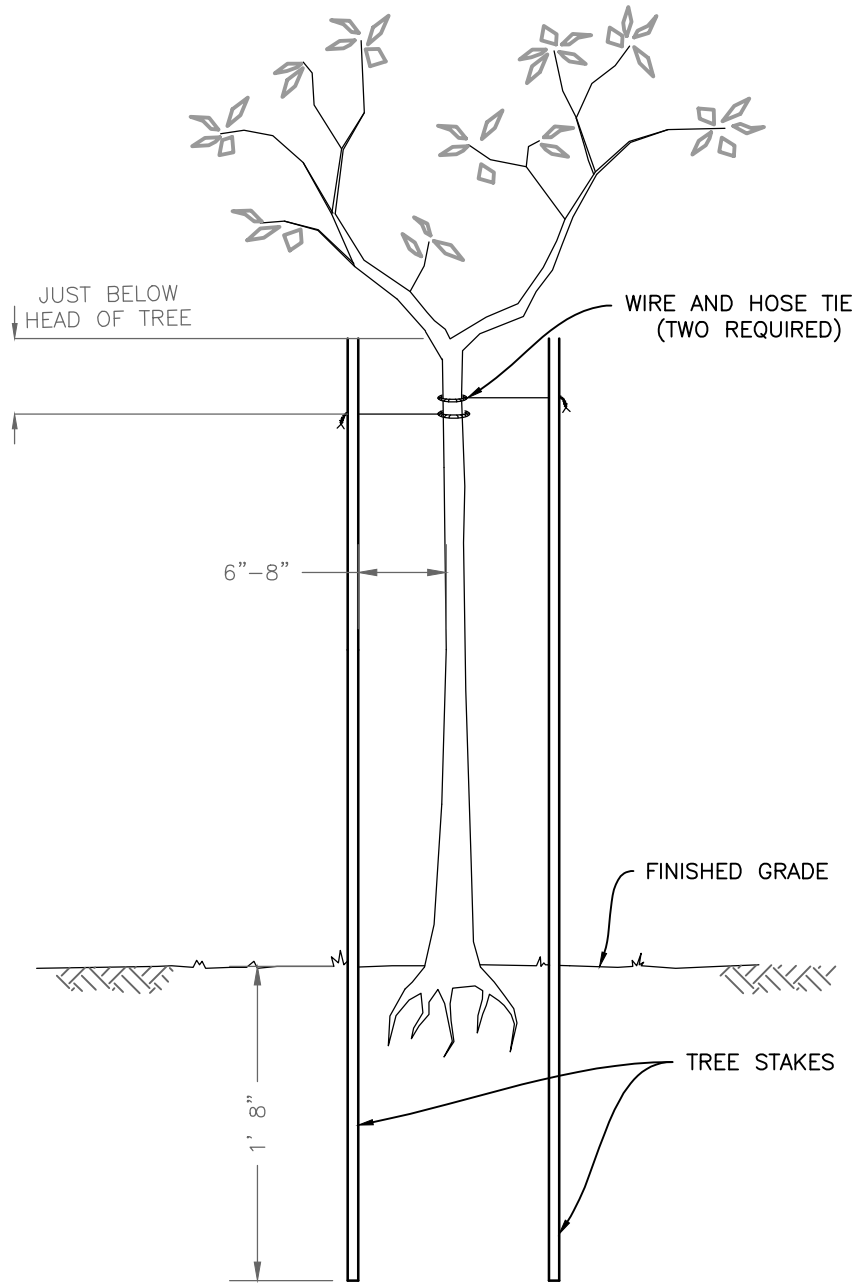
1. EACH WIRE SHALL BE WRAPPED AROUND 2 SQUARES MIN. AND AROUND THE LODGE POLE (IN OPPOSITE DIRECTIONS) PRIOR TO BEING TWISTED TOGETHER. BEND WIRE DOWNWARD.
2. WIRE SHALL BE #12 AWG, ZINC COATED WIRE.
3. TREE STAKES:  
 CASE 1: 1-1/2"Ø, SCHEDULE 40, GALVANIZED STEEL PIPE STAKE  
 CASE 2: 2"Ø PINE LODGE POLE TREATED W/ COPPER NANATHANATE (OR AS APPROVED BY ENGINEER) FENCING MATERIAL SHALL BE PULLED TAUGHT W/ NO SAGS AND PLACED SO THAT THERE ARE NO VOIDS
4. AREAS BETWEEN THE FENCING AND THE ADJACENT GRADE. MATERIAL MAY BE TRIMMED AS NECESSARY.



REVISION	BY	APPROVED	DATE
UPDATE	KLR	DFC	07/2022
UPDATE	MA	DFC	03/2023

CITY OF ARCATA  
 PLANT & TREE  
 PROTECTIVE FENCING  
 DETAIL

APPROVED BY:   
 N. B. KHATRI, R.C.E. #75428  
 DRAWING NUMBER: L-01



NOTES:

1. TREE STAKES:  
 CASE 1: 1-1/2"Ø, SCHEDULE 40, GALVANIZED STEEL PIPE STAKE  
 CASE 2: 2"Ø PINE LODGE POLE TREATED W/ COPPER NANATHANATE  
 (OR AS APPROVED BY ENGINEER)




REVISION	BY	APPROVED	DATE
UPDATE	KLR	DFC	07/2022
UPDATE	MA	DFC	03/2023

CITY OF ARCATA

---

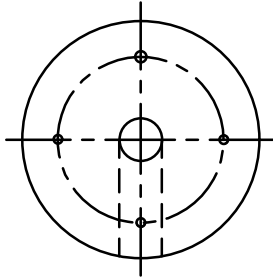
PLANT & TREE STAKING

APPROVED BY: 

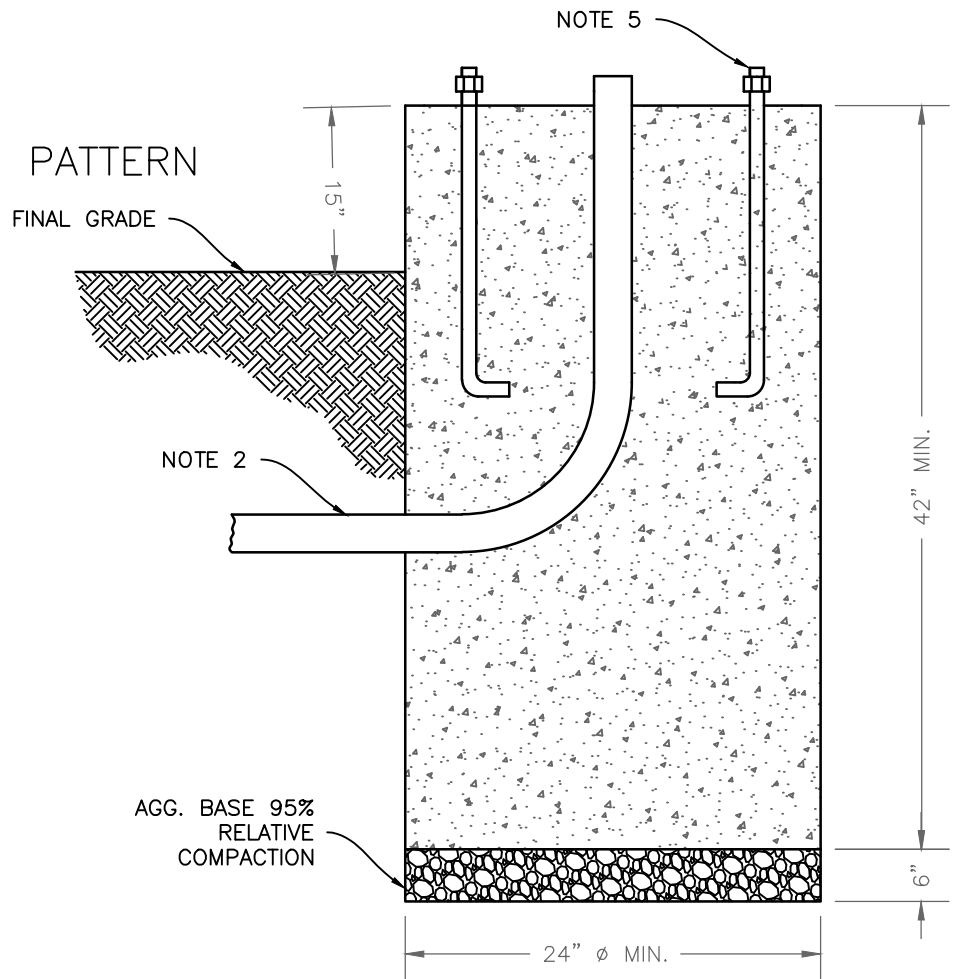
N. B. KHATRI, R.C.E. #75428

---

DRAWING NUMBER: L-02



1" X 18" BOLT HOLE PATTERN



### TYPICAL SCULPTURE FOOTING

NOTES:

1. DESIGN SHALL CONFORM TO THESE REQUIREMENTS EXCEPT AS OTHERWISE APPROVED BY THE CITY ENGINEER.
2. 2" PVC CONDUIT. 90° FACTORY-MANUFACTURED LONG RADIUS BEND (OPTIONAL).
3. CONCRETE DEPTH MUST BE A MINIMUM OF 42 INCHES DEEP, AND 24 INCHES IN DIAMETER.
4. A TOTAL OF 2 FEET OF SLACK WIRE SHALL BE LEFT INSIDE EACH CONDUIT (OPTIONAL).
5. 4 EACH - 1" DIA X 18 IN LONG, STEEL, GALVANIZED ANCHOR BOLTS.
6. NEW FOOTING TO BE 15" HIGHER THAN FINISHED GRADE.




REVISION	BY	APPROVED	DATE
UPDATE	KLR	DFC	07/2022
UPDATE	MA	DFC	03/2023

CITY OF ARCATA

---

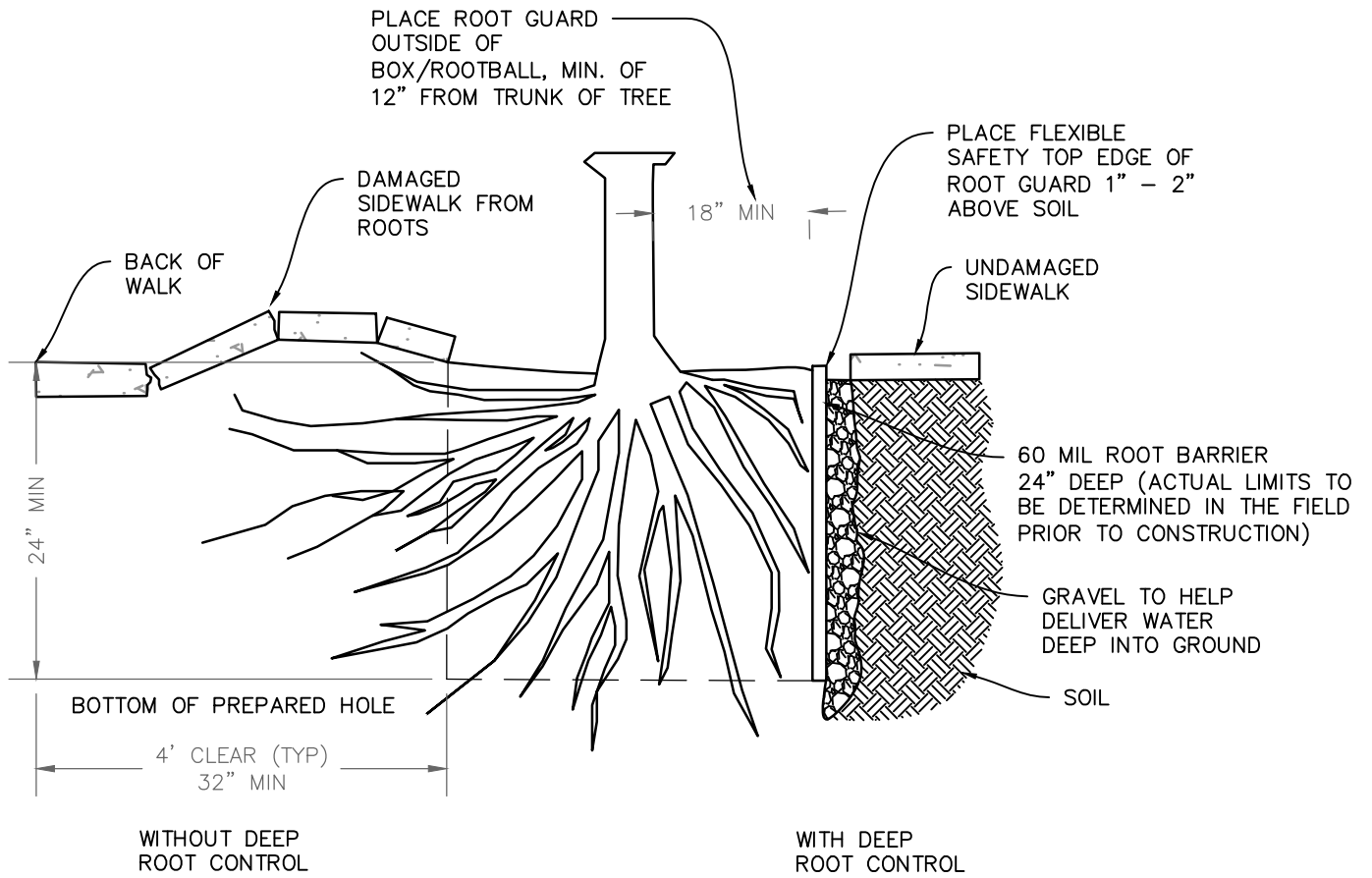
SCULPTURE FOOTING

APPROVED BY: 

N. B. KHATRI, R.C.E. #75428

---

DRAWING NUMBER: L-03



REVISION	BY	APPROVED	DATE
UPDATE	MA	DFC	03/2023

CITY OF ARCATA

DEEP ROOT BARRIER

APPROVED BY: *Netra Khatri*

N. B. KHATRI, R.C.E. #75428

DRAWING NUMBER L-05