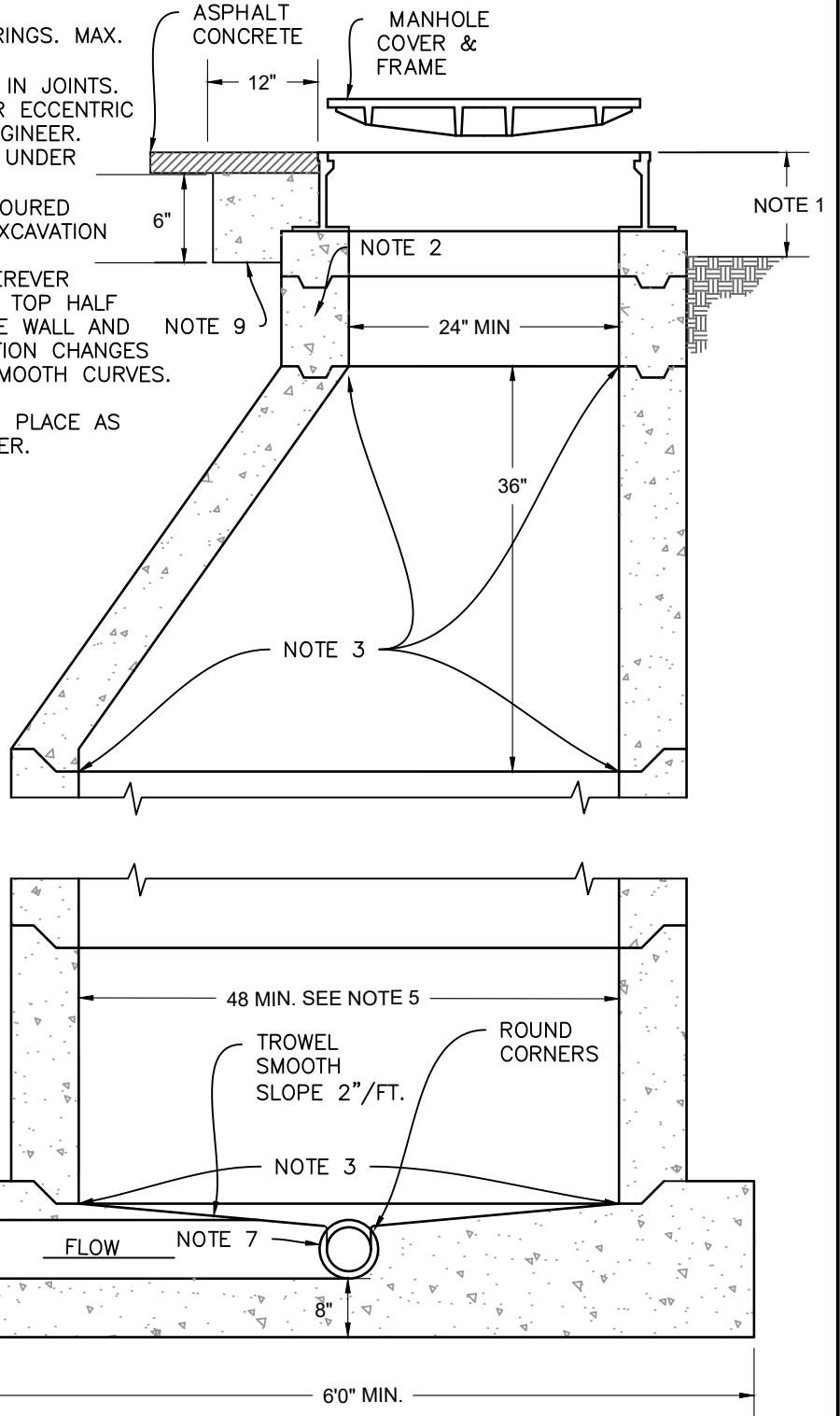


NOTES:

1. WHEN MANHOLES ARE INSTALLED IN UNIMPROVED AREAS, THE TOP OF THE COVER SHALL BE A MIN. OF 1 FOOT ABOVE ADJACENT GRADE.
2. MIN. OF ONE 3" AND 6" GRADE ADJUSTMENT RINGS. MAX. HEIGHT OF GRADE ADJUSTMENT RINGS 20".
3. RAM-NEK OR APPROVED EQUAL MAY BE USED IN JOINTS.
4. CONE SECTION MAY BE EITHER CONCENTRIC OR ECCENTRIC UNLESS OTHERWISE SPECIFIED BY THE CITY ENGINEER.
5. LARGER DIAMETER BARRELS MAY BE REQUIRED UNDER SPECIAL CIRCUMSTANCES.
6. 6' MIN. Ø CLASS "A" P.C.C. BASE SHALL BE POURED FULL THICKNESS TO UNDISTURBED SIDES OF EXCAVATION OR SHALL BE FORMED.
7. CONSTRUCT ALL FLOW CHANNELS OF PIPE WHEREVER POSSIBLE. AFTER BASE IS POURED BREAK OUT TOP HALF OF PIPE FLUSH WITH INSIDE FACE OF MANHOLE WALL AND CONSTRUCT U-SHAPED CHANNEL. MAKE ELEVATION CHANGES GRADUALLY AND DIRECTIONAL CHANGES WITH SMOOTH CURVES. SET RING BASE IN MORTAR.
8. BARREL AND TAPER SECTIONS MAY BE CAST IN PLACE AS APPROVED AND DIRECTED BY THE CITY ENGINEER.
9. CLASS "B" CONCRETE



REVISION	BY	APPROVED	DATE
UPDATE	DR	DFC	04/2023

CITY OF ARCATA

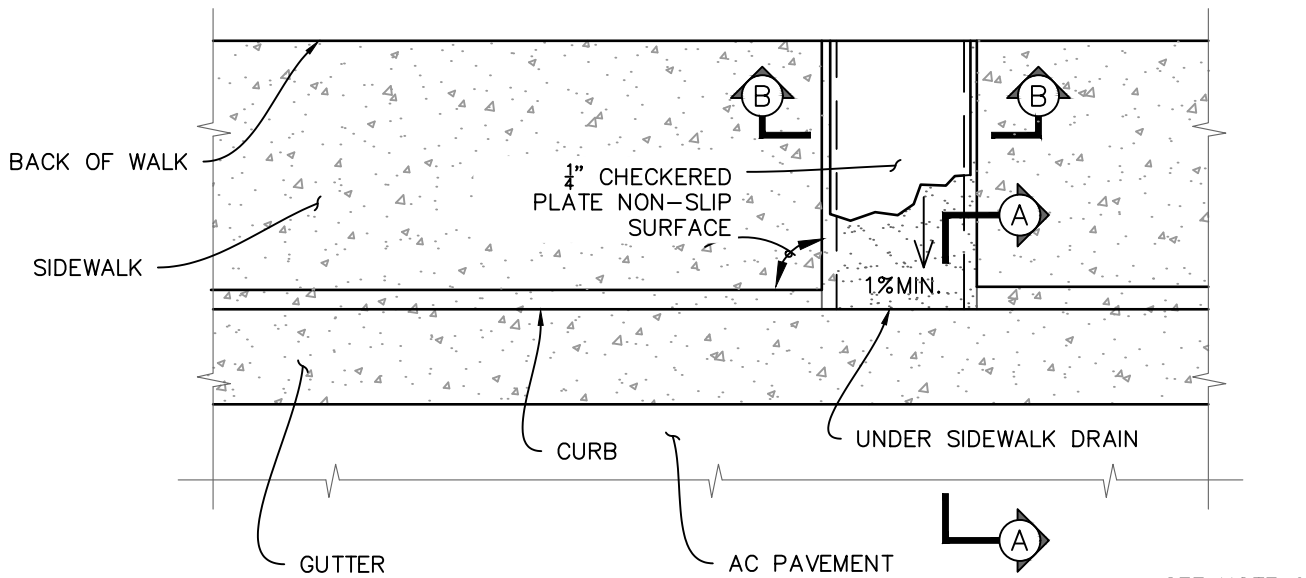
STD. PRECAST CONCRETE

STORM DRAIN MANHOLE

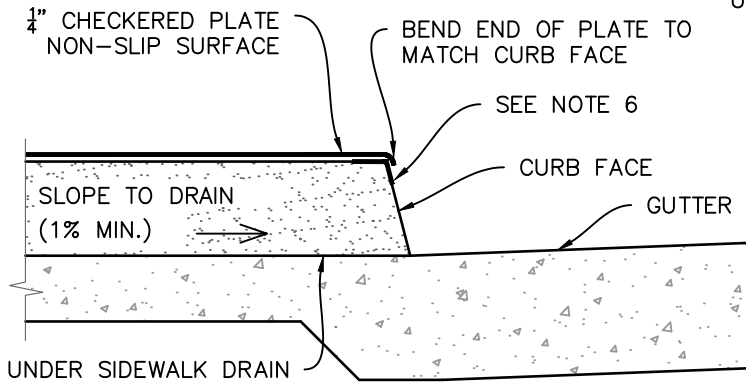
APPROVED BY: *Netra Khatri*

N. B. KHATRI, R.C.E. #75428

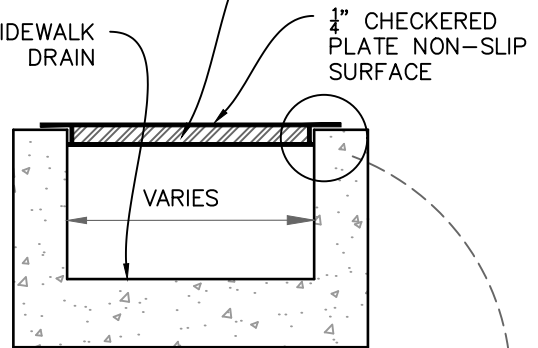
DRAWING NUMBER D-01



SEE NOTE 6



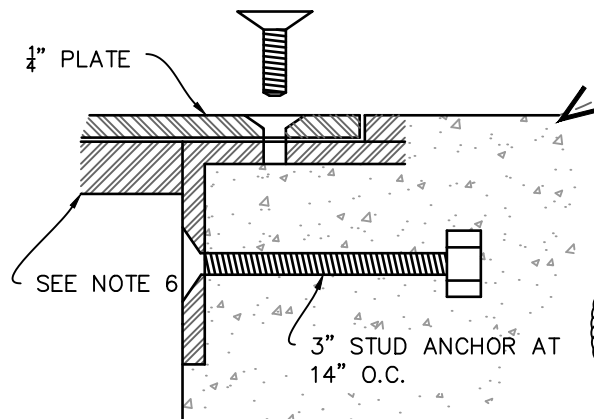
SECTION A-A



SECTION B-B

NOTES:

1. 1/4" - 11UNC - 2A FLAT HEAD METAL CAP SCREWS FASTENED AT 24" O.C. TO "L" FRAME
2. 1-1/2" x 1-1/2" x 1/4" "L" FRAME WITH 3/8" x 1/4" STEEL STRIP WELDED TO FRAME
3. ALL EXPOSED METAL PARTS TO BE GALVANIZED AFTER FABRICATION
4. CHECKERED PLATE MAY BE ALUMINIUM OR GALVANIZED STEEL WITH A NON-SLIP SURFACE
5. SIDEWALK DRAIN TO BE CONSTRUCTED AT 90° ANGLE FROM CURB LINE
6. 1"x1"x1/4" ANGLE IRON MECHANICALLY FASTENED OR WELDED ALONG CURB FACE FOR REINFORCEMENT



REVISION	BY	APPROVED	DATE
UPDATE	DR	DFC	04/2023

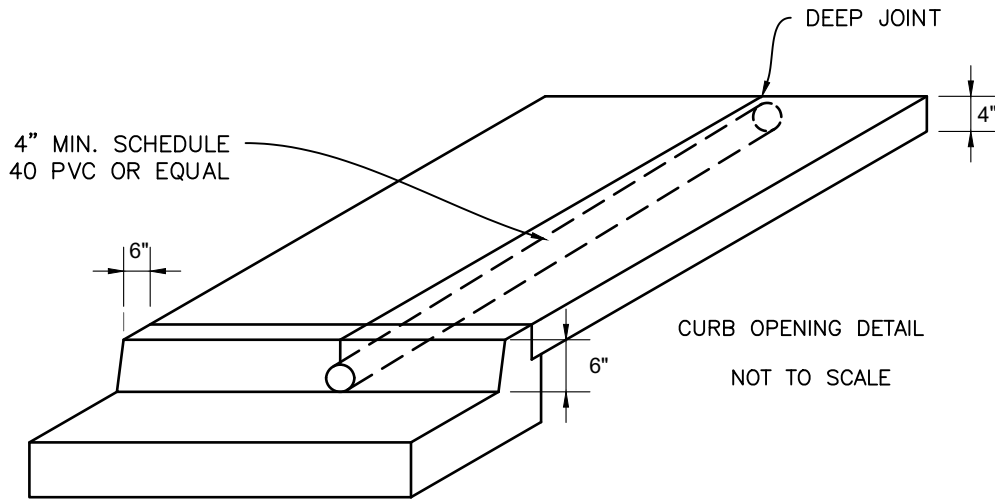
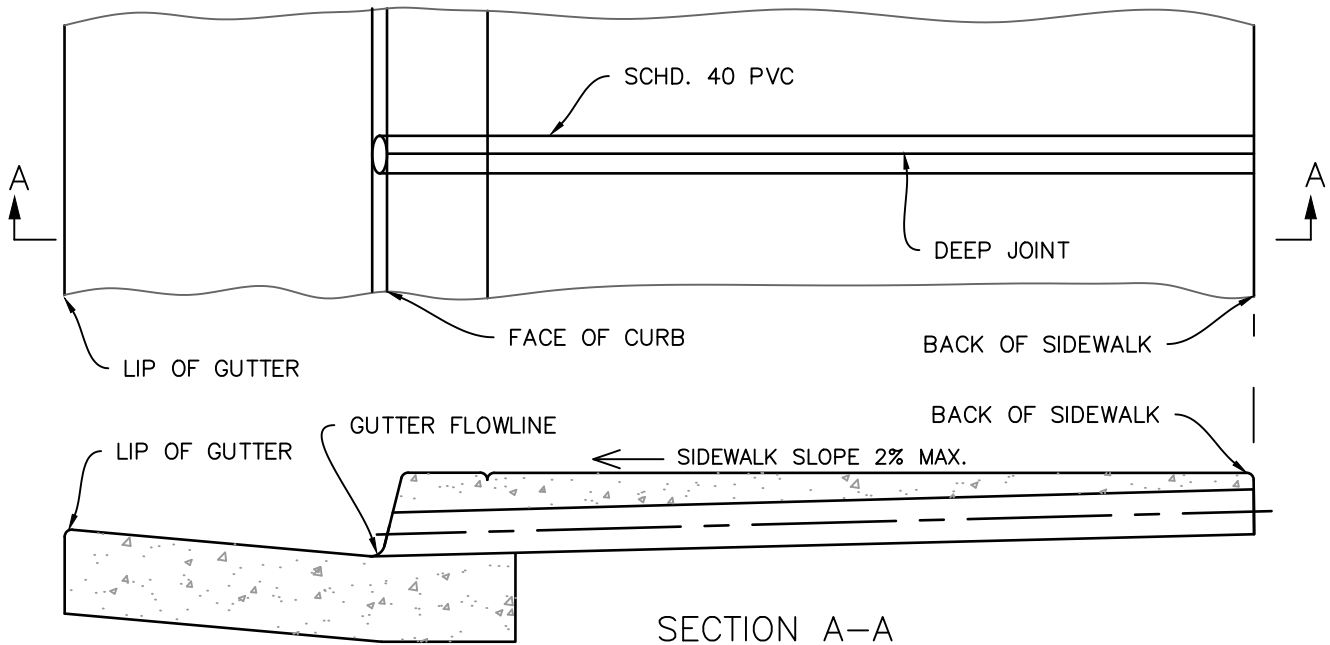
CITY OF ARCATA

UNDER SIDEWALK DRAIN

APPROVED BY: *Netra Khatri*

N. B. KHATRI, R.C.E. #75428

DRAWING NUMBER D-08



NOTES:

1. ON SITE DRAINAGE AND LOCATION OF CURB OUTLETS SHALL BE BY OWNER AS APPROVED BY THE CITY ENGINEER.
2. DRAIN PIPE SHALL BE INSTALLED SO THAT TOP OF PIPE IS 2" MINIMUM BELOW TOP OF SIDEWALK.
3. SIDEWALK DRAIN TO BE 4" OR LARGER SCHEDULE 40 RIGID POLYVINYL CHLORIDE PIPE OR APPROVED EQUAL.
4. DEEP JOINTS TO BE PLACED OVER FULL LENGTH OF PIPE TO GUTTER. TO BE APPROVED BY THE CITY ENGINEER.
5. SMOOTH FACE OF GUTTER AT PIPE SHALL BE MAINTAINED WITH NO GAPS.




REVISION	BY	APPROVED	DATE
UPDATE	DR	DFC	04/2023

CITY OF ARCATA

---

THRU SIDEWALK  
PIPE DRAIN

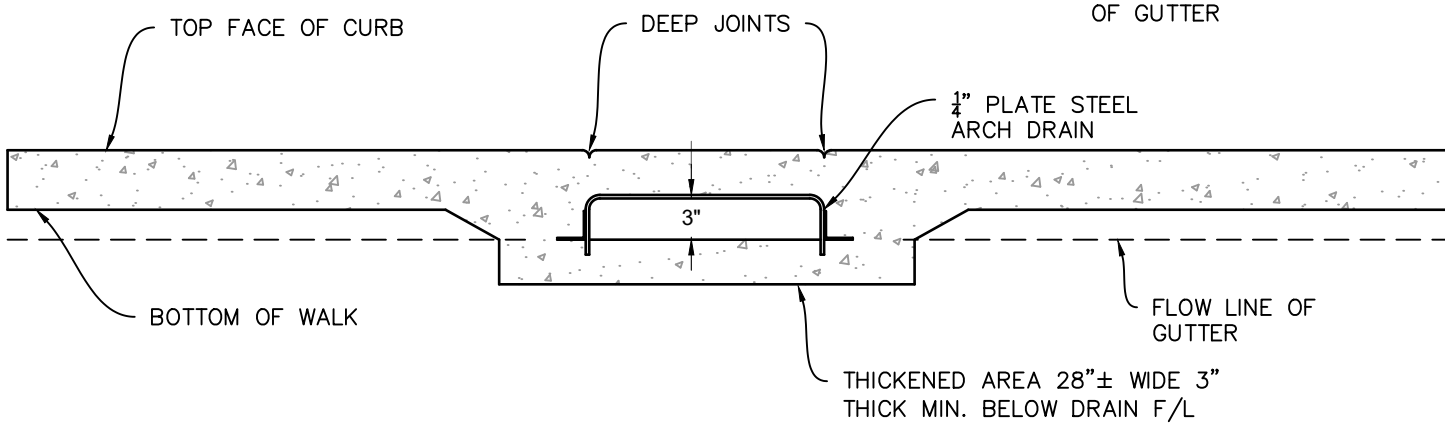
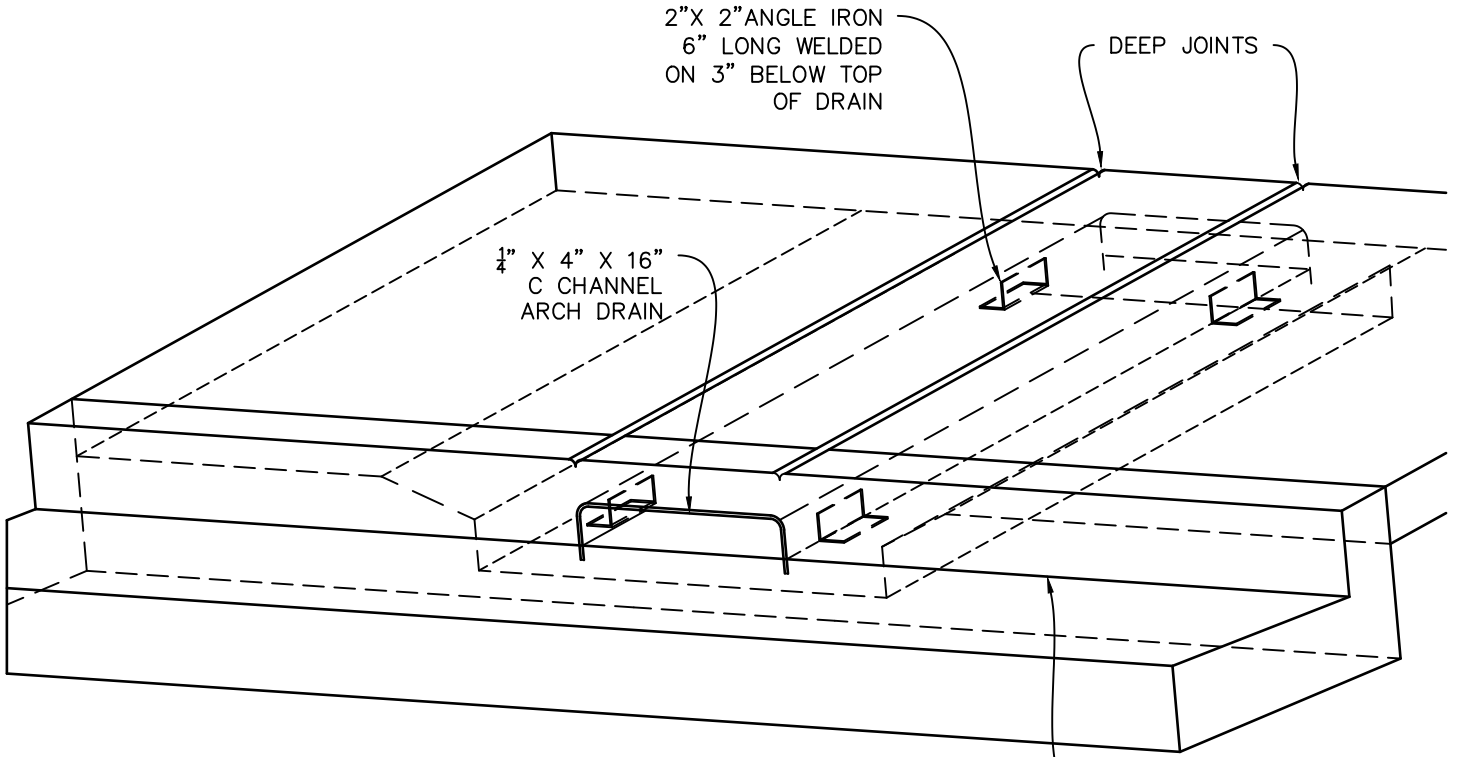
APPROVED BY: 

---

N. B. KHATRI, R.C.E. #75428

---

DRAWING NUMBER: D-11



NOTES:


1. BOTTOM OF DRAIN TO BE SMOOTHED PRIOR TO SETTING CHANNEL IN WET CONCRETE.
2. DRAIN TO SLOPE A MIN. OF 2%
3. AFTER SETTING C CHANNEL, THICKENED AREA WILL BE ALLOWED TO SET UP ENOUGH TO PREVENT FURTHER SINKING OF CHANNEL. A COLD JOINT IS ACCEPTABLE.



REVISION	BY	APPROVED	DATE
UPDATE	DR	DFC	04/2023

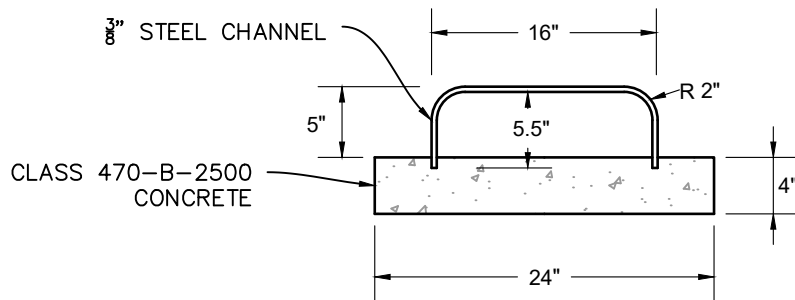
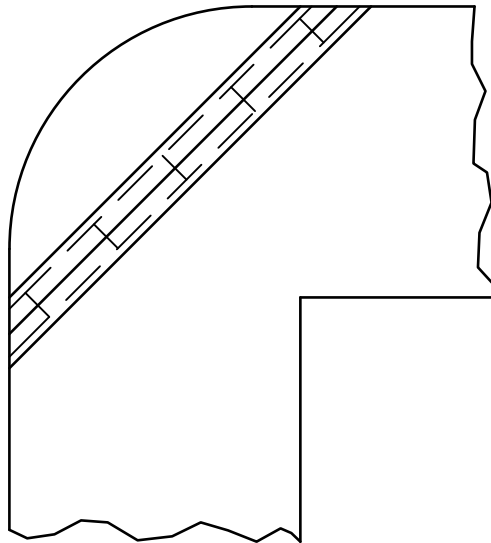
CITY OF ARCATA

TYPICAL SIDEWALK  
ARCH DRAIN

APPROVED BY: 

N. B. KHATRI, R.C.E. #75428

DRAWING NUMBER D-12



REVISION	BY	APPROVED	DATE
UPDATE	DR	DFC	04/2023

CITY OF ARCATA

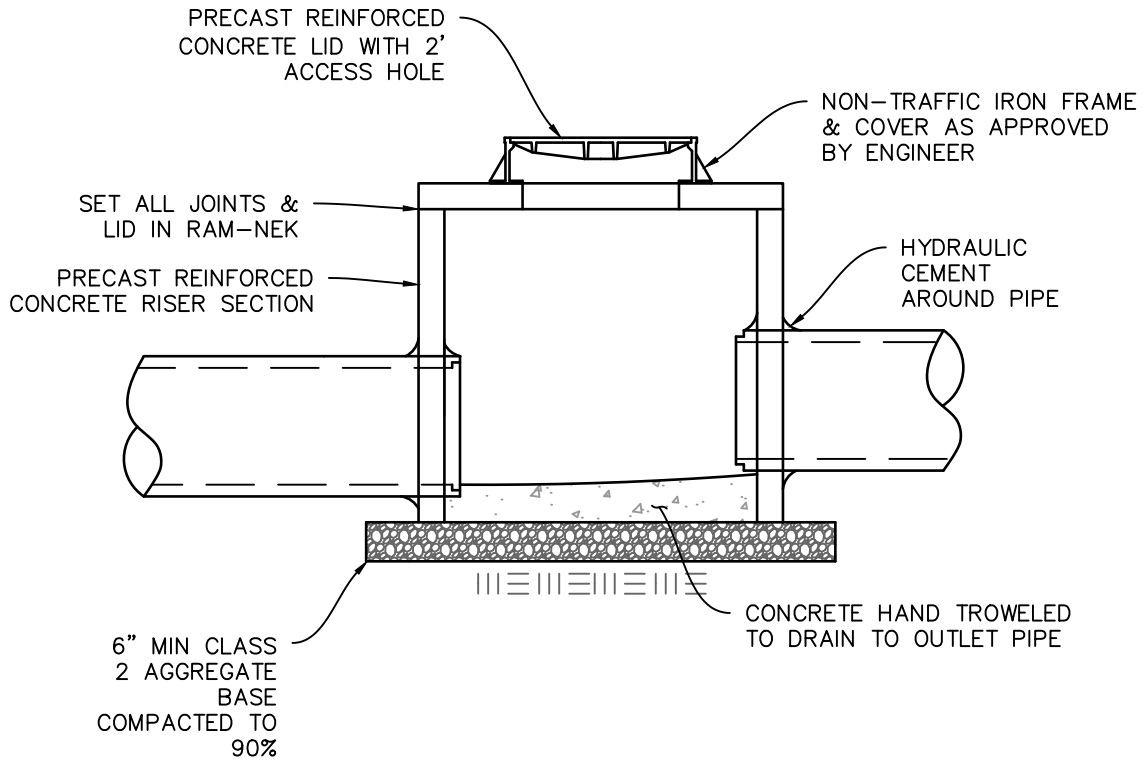
CROSS CORNER  
ARCH DRAIN

APPROVED BY:

*Netra Khatri*

N. B. KHATRI, R.C.E. #75428

DRAWING NUMBER D-16



- NOTES:
1. BED RISER ON CLASS 2 AGGREGATE BASE
  2. PACK AROUND PIPES WITH HYDRAULIC CEMENT
  3. SHAPE CONCRETE FLOOR TO ELIMINATE STANDING WATER



REVISION	BY	APPROVED	DATE	CITY OF ARCATA	APPROVED BY:	
UPDATE	DR	DFC	04/2023			TYPICAL STORM DRAIN MANHOLE NON-TRAFFIC
				DRAWING NUMBER	D-17	