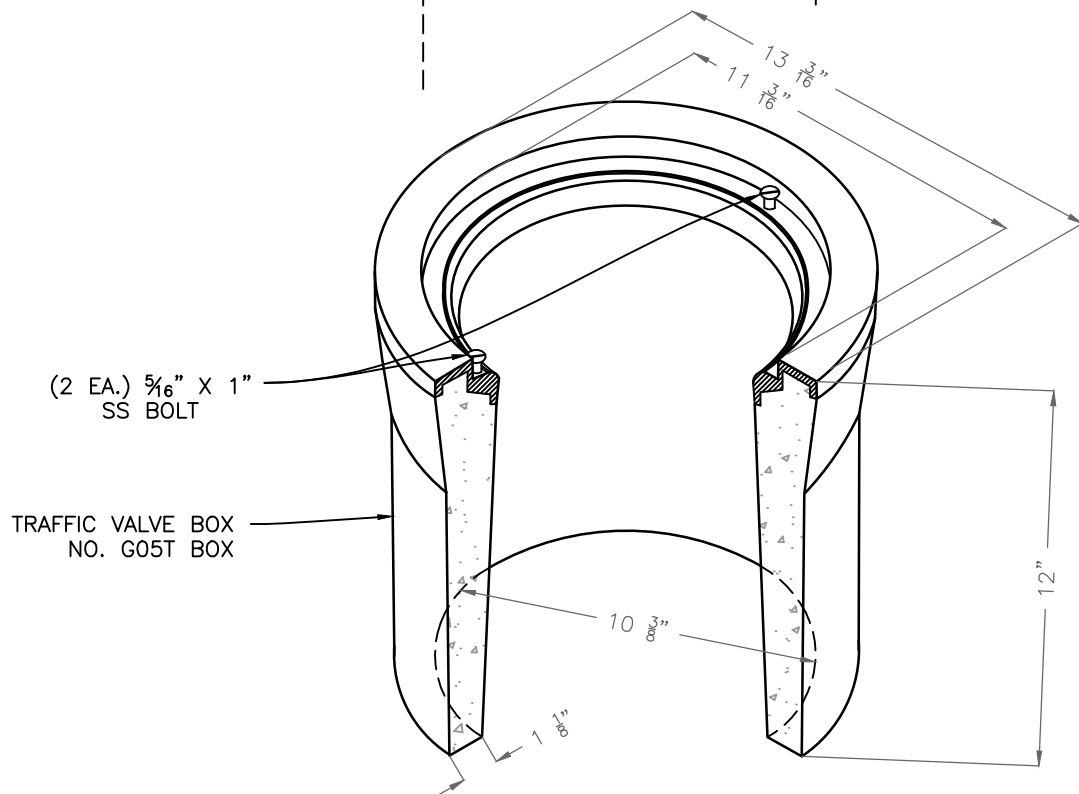


CHRISTY G5 CONCRETE UTILITY BOX



NOTES


1. DO NOT USE A LOCKING GRADE RING.
2. USE OF AN EQUIVALENT ALTERNATIVE REQUIRES PRE-APPROVAL.
3. LID SHALL BE STAMPED "SEWER" OR "WATER" OR "MONUMENT" AS APPROPRIATE.
4. CHRISTY G8 OR APPROVED EQUAL TO BE USED IN THE EVENT THAT A LARGER BOX IS NEEDED.



REVISION	BY	APPROVED	DATE
UPDATE	KLR	DFC	04/2023

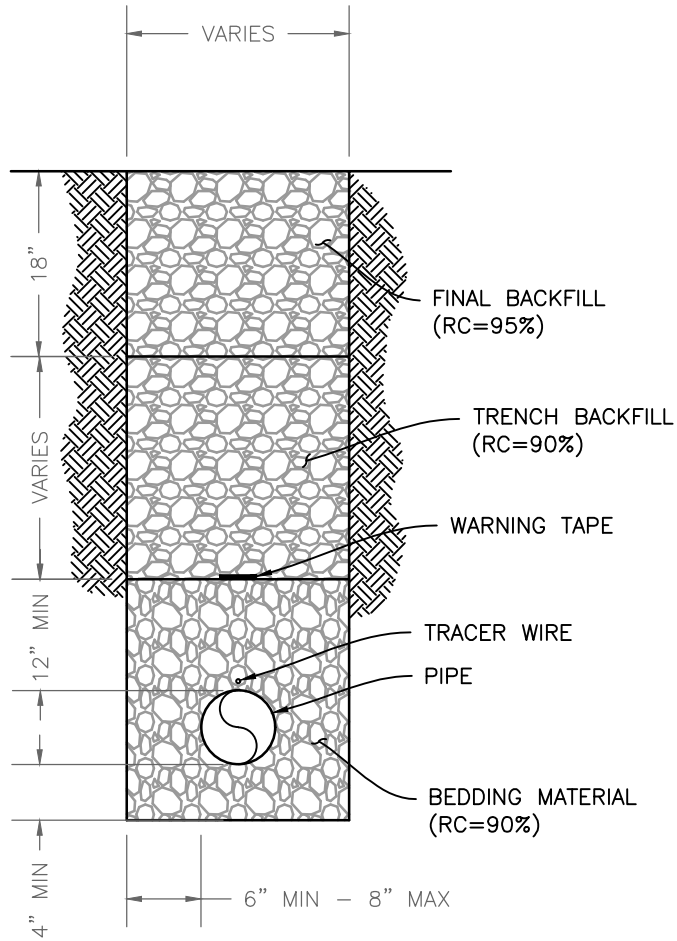
CITY OF ARCATA

VALVE BOX

APPROVED BY: 

N. B. KHATRI, R.C.E. #75428

DRAWING NUMBER G-01



**NOTES**


1. FOR TRENCH RESURFACING IN IMPROVED STREETS REFER TO CITY STD DTL ST-30 FOR PAVEMENT INSTALLATION REQUIREMENTS.
2. WHERE COVER IS LESS THAN 30" SPECIAL DESIGN IS REQUIRED AND SHALL BE APPROVED BY CITY ENGINEER.
3. BEDDING MATERIAL SHALL CONFORM TO THE "GREENBOOK" STANDARD SPECIFICATIONS FOR PUBLIC WORKS CONSTRUCTION.
4. TRENCH BACKFILL MATERIAL SHALL CONFORM TO THE "GREENBOOK" STANDARD SPECIFICATIONS FOR PUBLIC WORKS CONSTRUCTION.
5. WARNING TAPE TO BE INSTALLED 12" ABOVE PIPE.
6. DESIGN SHALL CONFORM TO THESE REQUIREMENTS EXCEPT AS OTHERWISE APPROVED BY THE CITY ENGINEER.
7. RETROFIT MAY ADJUST TO MATCH FIELD CONDITIONS IF APPROVED BY ENGINEER.
8. INSPECTION OF FORMS AND FINISHED WORK REQUIRED. SCHEDULE INSPECTION A MINIMUM OF 24 HOURS IN ADVANCE.
9. BACKFILL AND BEDDING WILL NOT BE PEA GRAVEL.



REVISION	BY	APPROVED	DATE
UPDATE	KLR	DFC	04/2023

CITY OF ARCATA

TRENCH BACKFILL

APPROVED BY: 

N. B. KHATRI, R.C.E. #75428

DRAWING NUMBER: G-02