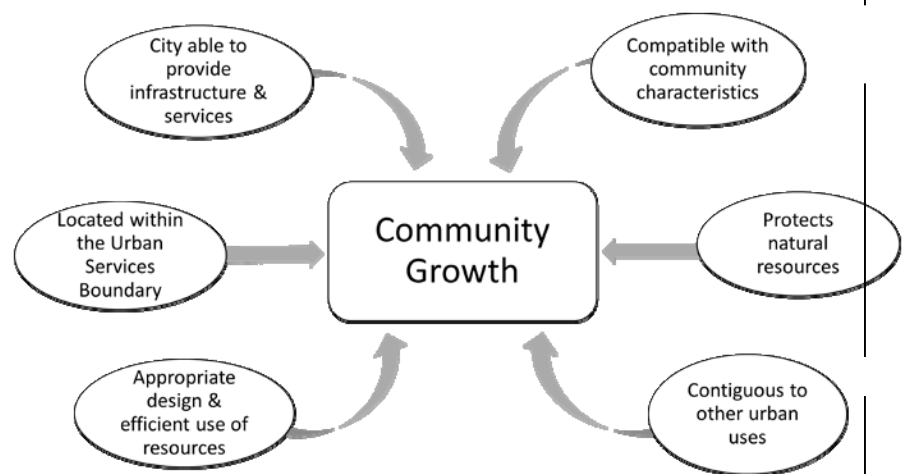


GROWTH MANAGEMENT ELEMENT

2.4 INTRODUCTION

Growth Management Overview. ~~Since it was originally incorporated in the late 1850s, Arcata's population has grown to an~~ estimated ~~1998-2000 population of about to be~~ 18,900 ~~16,500 persons~~ in the 2020 Census. The General Plan ~~includes an projects-anticipates approximately 1% year over year population growth with a maximum assumption of low ambitious population growth, to about of~~ 20,000 ~~27,000~~ persons, by the year ~~2020~~ 2045.

The majority of the City's growth has been, and is planned to be, ~~located~~ within the present City boundary, and concentrated within identified Infill Opportunity Areas (see Land Use Element); including the Gateway Area as well as around the downtown area, within existing neighborhood commercial centers, and near Cal Poly Humboldt Humboldt State University. Growth is directed to these areas because they have existing urban services and infrastructure. In addition, infill implements the regional Climate Action Plan and the City's sea level rise adaptation plan, preserves the natural and open working lands surrounding the City, and provides needed reinvestment in existing developed areas.



Growth Management Considerations

Cal Poly Humboldt is a major driver for both economic and population growth. There are currently about 5,739 students enrolled at Cal Poly Humboldt, with projected enrollment of 11,000 (full time equivalent) students by 2028^a. While a proportion of these students are anticipated to be remote learners, and Cal Poly will be housing a large proportion of newly enrolled students, Cal Poly's growth will impact the population.

Planning Areas.

The City of Arcata ~~has an~~ incorporated area is defined by its City limits. ~~The City also has an~~ Urban Services Boundary (USB) that defines the anticipated limits for extending City services and infrastructure ~~so as to accommodate new development anticipated~~ within the General Plan time frame ~~of this General Plan; a~~ There is also a Sphere of Influence (SOI) boundary that ~~indicates- includes~~ unincorporated lands which ultimately may be annexed to the City and

developed ~~and annexed to the City~~; and a Planning Area which also includes nearby unincorporated lands. Collectively, these planning features/areas and the policies that guide related development activities, such as annexation, constitute much of the City's growth management program. The City's Sphere of Influence/SOI is shown on Figure LU-a, the and Planning Area are shown on Figure LU-b, and the Urban Services Boundary on Figure GM-a. Each of these features is described in more detail below.

Annexations/ Expansion of City Boundaries.

The Cortese/~~Knox~~/Hertzberg (CKH) Local Government Reorganization Act of 1985-2000 sets forth ~~the rules and~~ regulations under which Arcata may apply to the Local Agency Formation Commission (LAFCo) to expand its ~~adopted~~ City limits/boundary. The legislative intention of this law is to encourage orderly growth and development, which is considered essential to the social, fiscal, and economic well-being of the state. It recognizes that the formation of local agency boundaries is an important factor in assuring orderly that development and the efficient delivery of services is orderly. ~~Within the legislation~~ The CKH Act gives, the Local Agency Formation Commission (LAFCos) review is given the sole and exclusive authority for the annexations of additional territory to a city. ~~The Coastal Land Use Plan applies only to the land areas which are within the city boundary.~~

Sphere of Influence.

Before LAFCo may approve territorial an annexation, it must define and adopt that territory must be within the City's SOI/Sphere of Influence for the City. A Sphere of Influence/SOI is described as a plan for defines the City's probable ultimate physical boundaries and service area as determined by LAFCo of a local agency.



The Sphere of Influence boundary/SOI includes all City lands and unincorporated lands (under County jurisdiction) that may be annexed as part of the ultimate development of the City. This ultimate development extends beyond in the twenty-year General Plan time frame of the General Plan. Designating unincorporated lands (under County the jurisdiction of the County) lands within the Sphere of Influence is done for two reasons/SOI:

1. It a Allows the City to plan for the eventual annexation and extension of services as part of community growth.
2. Allows the City to It designates uses for those lands that are compatible with adjacent City lands.

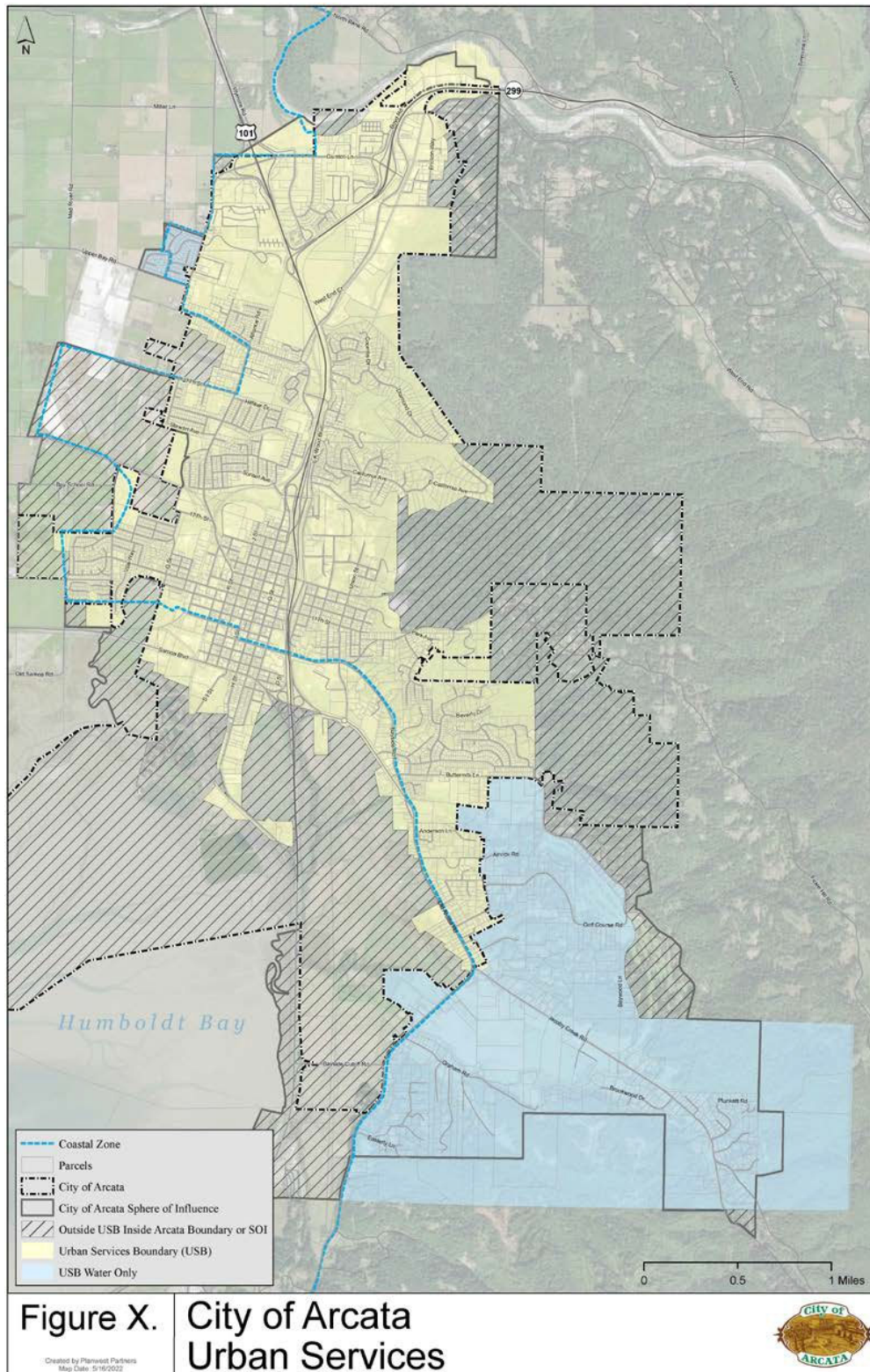
The City's [Sphere of Influence SOI](#) is adopted, as required by state law, by ~~the~~ Humboldt County LAFCo, a county-wide agency.

Arcata Planning Area.

California planning law requires the City to adopt a general plan for lands within its limits and also for any land outside its boundaries which bears relation to its planning. Defining a Planning Area is a means by which the City can communicate its concerns for the future of surrounding lands under the jurisdiction of the County or neighboring cities. The Planning Area may extend beyond the City's [Sphere of Influence SOI](#).

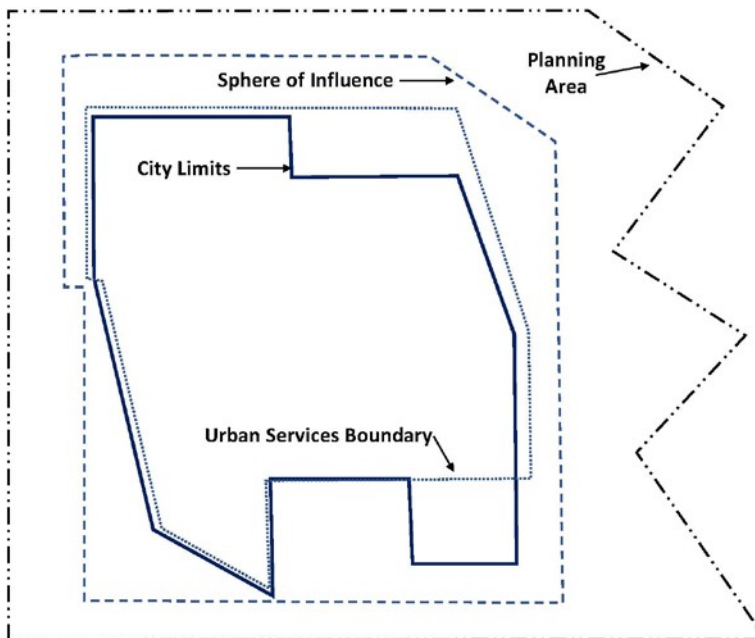
The Planning Area includes the City, the Sphere of Influence and surrounding county lands ~~that are beyond the SOI~~ intended to remain unincorporated, where uses and activities impact the City. The Planning Area boundary is determined by geographic features, such as the Pacific Dunes, Pacific Ocean, Mad River, Fickle Hill ridgeline, and hydrological features such as the watersheds of Arcata's creeks ([Figure LU-b](#)). Other considerations for determining the Planning Area include preserving viewsheds and maintaining a greenbelt around the City.

FIGURE GM-a URBAN SERVICES BOUNDARY



The Urban Services Boundary.

The Urban Services Boundary is a mapped limit line surrounding the City's developed and developing areas. It can also include areas of the [Sphere of Influence \(SOI\)](#) where urban



development is planned. Inside the City limits, the boundary excludes areas inappropriate for urban development, such as agricultural lands and the community forest. Where it extends beyond the City limits, it does not extend outside the City's [Sphere of Influence \(SOI\)](#). The boundary is determined by the City's interest in extending services and infrastructure (water, wastewater collection, police services, etc.) to urban uses. The City provides certain areas, such as Jacoby Creek, with "water only" services. The Urban Services Boundary encompasses the area wherein urban development may occur during the General Plan's twenty-year time frame.

Illustrative of City Limit, Urban Services Boundary, Sphere of Influence and Planning Area Boundary

Relationship with Other General Plan Elements and OPR General Plan Guidelines.

The Growth Management Element includes guiding principles, policies and implementation to ensure municipal services and management operations are coordinated concurrently with anticipated development and consistent with Land Use, Circulation, Housing and other element plans and policies. The Growth Management Element guides and sets parameters under which future development may occur, consistent with the Land Use Element. The Growth Management Element provides guidelines for analyzing future boundary changes, development project proposals and mitigation. The City can apply Growth Management guidance to prioritize public facilities and services access that enhances quality of life, including transportation, housing, parks, open space, trails, greenbelts, recreational facilities (including senior and youth centers), community centers, grocery stores, health care facilities, childcare centers, libraries, and cultural centers. Ensuring sufficient community facilities and support services is important to maintain social equity.

The Growth Management Element is consistent with state planning priorities (California Government Code section 65041.1) to promote equity, strengthen the economy, protect the environment, and promote public health and safety, as summarized below:

- (a) To promote infill development and equity by rehabilitating, maintaining, and improving existing infrastructure that supports infill development and appropriate reuse and redevelopment of previously developed, underutilized land presently served by transit, streets, water, sewer, and other essential services, particularly in underserved areas, and to preserving cultural and historic resources.
- (b) To protect environmental and agricultural resources by protecting, preserving, and enhancing natural resources, including working landscapes such as farm, range, and forest lands, natural lands such as wetlands, watersheds, wildlife habitats, and other wildlands, recreation lands such as parks, trails, greenbelts, and other open space, and landscapes with locally unique features and areas deserving special protection.
- (c) To encourage efficient development patterns by ensuring that any infrastructure associated with development, other than infill development, supports new development that does all of the following: uses land efficiently; is built adjacent to existing developed areas to the extent consistent with the priorities specified pursuant to subdivision; is located in an area appropriately planned for growth; is served by adequate transportation and other essential utilities and services; and minimizes ongoing costs to taxpayers.

Guiding Principles and Goals.

- A. Lands in the Sphere of Influence should remain rural and under the land use authority of the County until it can be demonstrated that urban services and annexation by the City is necessary until they are annexed to the City.
- B. Preserve the rural existing community character and promote resource protection in the Planning Area.
- C. Maintain an Urban Services Boundary that erves includes only the existing urban area, and areas appropriate for development by the year 20202045.
- D. ~~Locate new urban~~ Prioritize infill development in areas within or contiguous to existing urban uses and services and concentrate growth around existing activity centers. -
- E. ~~Protect-Exclude~~ flood-prone, steeply sloped, and other natural hazard areas, streamside buffers, ~~areas~~ and productive natural resource, agricultural, and forest lands from urban development.
- F. Incorporate greenbelts, designated natural areas, and other open space into the planning area and Sphere of Influence in order to maintain an identity separate from surrounding communities.
- G. Manage the timing and amount of growth in accordance with the ability to maintain acceptable levels of service and quality of life for existing and new residents.

2.5 POLICIES

The Growth Management Element contains the following policies:

- GM-1 Planning Area
- GM-2 Sphere of Influence
- GM-3 Annexation
- GM-4 Urban Services and Urban Services Boundary

POLICY GM-1 PLANNING AREA

Objective. Advocate for appropriate Planning Area land uses and management of for ~~Planning Area land outside the City boundary, including Arcata's surrounding~~ creek watersheds, the Arcata Bottoms, and coastal areas, in recognition that they will affect Arcata's the future community form ~~of the Arcata community~~. The intent is that land uses shall be limited to timber and agricultural production and natural resources management and development only at rural densities be approved within the Planning Area.

GM-1a **Planning Area.** The Planning Area shall include all lands ~~within the boundary~~ shown on Figure LU-~~ab~~. The Planning Area includes lands where any future changes in use or management practices are likely to ~~have an impact on~~ the City of Arcata. The City shall provide mapping showing the planning area boundary and request that all land use and development applications received by the County, or resource management plans received by other agencies, be referred to the City. ~~The City shall for~~ review and comment ~~prior to entitlements on these applications and plans~~. The City shall also advocate that the County implement policies and that property owners manage for the conservation of these unincorporated lands. This policy applies to unincorporated lands within the Planning Area ~~but outside the Sphere of Influence~~.

GM-1b **Referrals by Humboldt County.** The City shall review all development and infrastructure proposals affecting the Planning Area and communicate the City's position on these matters to the applicable decision-making body. Humboldt County shall be requested to refer all planning studies and applications for development in the Planning Area to the Arcata Community Development Department, for review and comment, prior to taking action.

GM-1c **Land-use designations within the Planning Area.** The City shall request that the County of Humboldt retain timber, agricultural, and rural ~~and agricultural~~ designations on lands located within the Planning Area. The City shall request that the County adopt consistent land use designations for lands within the planning area ~~but outside the Sphere of Influence~~, as shown on Figure LU-b.

GM-1d **Greenbelt.** The rural and agricultural lands within the Planning Area are designated by the City as open space or greenbelt. The intent is that such lands shall not be developed with urban densities or uses and that land uses shall be limited to [timber and agricultural production and natural resources conservation management and development only at rural densities be approved.](#)

GM-1e **Resource Protection in the Planning Area.** Proposals which could affect the Planning Area's resources, including those resources addressed in the Resources Conservation and Management Element, shall be reviewed by the City. City review shall address the proposal's compatibility with applicable General Plan policy. The City shall communicate the intent of this policy to agencies with jurisdiction within the Planning Area (for example, the California Department of Forestry and Fire Protection for timber management, and the Humboldt Bay Harbor, Recreation and Conservation District for Humboldt Bay tidelands management) together with the policies in the Resource Conservation and Management Element.



POLICY GM-2 SPHERE OF INFLUENCE

Objective. Designate an appropriate amount of urban reserve [and open space](#) land in the Sphere of Influence (SOI) to provide for the ultimate development of the City.

GM-2a **Sphere of Influence.** ~~The proposed Sphere of Influence boundary, which must be adopted by LAFCo for the City of Arcata, is shown on Figure GM-a.~~ The [SOI boundary](#) defines land ~~parcels that are~~ eligible for annexation to the City in the future, [shown on Figure GM-a](#). The City shall maintain an adequate amount of land in the [Sphere of Influence SOI](#) to accommodate future growth, consistent with the goals and policies of this plan, ~~as well as to protect open space and productive resource uses~~. Annexation of property may not proceed unless or until such lands are within the [SOI Sphere of Influence boundary](#).

GM-2b ~~Changes to the Sphere of Influence~~ [Updates and Amendments boundary](#). ~~The City shall comprehensively evaluate the~~ [LAFCo updates the](#) Sphere of Influence ~~boundary at least every five years, as necessary,~~ but more frequently if appropriate. [The City can also apply directly to LAFCo for a SOI amendment.](#) ~~Any boundary amendments~~ [Updates Amendments to the SOI](#) shall be considered by the Planning Commission and recommended to the City Council, prior to ~~any LAFCo action by~~

~~LAFCo~~. Any City decision to amend change the SOI boundary shall be based on the following:

1. The resulting area has an adequate supply of land to accommodate projected housing needs allocated by the Humboldt County Council of Government Association of Governments (HCAOG).
2. Any property owner ~~of property located adjacent the Sphere of Influence boundary~~ may request that the City ~~apply to LAFCo~~ add ~~his or her~~their lands to the Sphere of Influence SOI.
3. Any such proposal shall also identify the requested land use designations and any other necessary or appropriate General Plan Element amendments ~~for consistency and social equity to the various elements of the General Plan~~.
4. In considering such requests, and at during each ~~periodic comprehensive evaluation SOI Update~~, the City Council, upon Planning Commission recommendation ~~of the Planning Commission~~, shall determine whether it would serve the public interest to designate additional lands ~~for which to provide to~~ receive municipal services and be developed with urban uses.
5. ~~An amendment to the Sphere of Influence SOI Update~~, to include additional lands, shall be subject to environmental review pursuant to CEQA.
6. A ~~proposal to amend the Sphere of Influence SOI Update~~ may be considered concurrently with an annexation request.
7. Any SOI adjustment ~~to the sphere boundary~~ must incorporate adequate open space and resource management provisions ~~for open space~~.

GM-2c **Areas in Sphere of Influence intended only for partial services.** Some SOI areas are ~~included in the Sphere of Influence~~ only for the purpose of receiving City water service, such as the Jacoby Creek residential area. Such areas are not to be considered for annexation during the 20-year time frame of this Plan.

GM-2d **City land-use designations.** The City's land use designations for parcels ~~located within~~ the Sphere of Influence SOI are shown in Figure LU-a. These designations have legal force and effect only upon annexation ~~of particular land areas~~ to the City.

GM-2e **Prezoning of Sphere of Influence parcels ~~within the Sphere of Influence~~.** Lands in the Sphere of Influence SOI shall not be prezoned until ~~the City considers particular~~ annexation ~~requests is proposed~~. ~~Such p~~Prezonings shall ~~be consistent with the apply~~ City land-use designations ~~for the Sphere area~~, or a General Plan Amendment would be required. The purpose shall be to provide maximum latitude to the City to determine the appropriate timing of expansion of the City boundaries, extension of services, and urban development.

GM-2f **County Land-use and Zoning designations in Sphere of Influence.** The City shall request that Humboldt County adopt agricultural, timber, natural resource, or other rural land use designations, within the Sphere of Influence SOI, as a holding zone to

prevent premature development prior to annexation to the City. This shall not apply to areas ~~which are~~ already ~~fully~~ developed such as Pacific Manor. The County's land-use designations are legally binding until annexation to the City is completed.

GM-2g **Resource lands in the Sphere of Influence.** The City shall periodically review the SOI boundary, especially to the west, to determine whether resource lands are being adequately protected.

POLICY GM-3 ANNEXATIONS

Objective. Provide for logical annexations of unincorporated areas, within the City's Sphere of Influence and/or Planning Area, only when ~~the~~ existing or proposed development is consistent with community character and City services can be adequately provided.

GM-3a **City annexation procedure.** The City prefers to consider annexation requests prior to LAFCo consideration. If ~~area~~ property owner(s) ~~or residents~~ request that the City initiate an annexation request to LAFCo, the following City review procedures shall apply:

1. Initiation and City review prior to LAFCo application filing:
 - a. ~~If lands are inhabited, a~~ petition must be signed by no less than ~~fifty-twenty-five~~ five percent of the resident registered voters, or at least twenty-five percent of property owners who also own twenty-five percent of the assessed value of land within the territory proposed for annexation of property located within the annexation area;
 - b.
 - c. ~~If lands are uninhabited but consist of more than one parcel and owner, a~~ petition must be signed by a majority of owners representing more than fifty percent of the annexation area. ~~If a single parcel, a petition must be submitted by owner(s).~~
2. The Planning Commission shall review and make a recommendation on the requested-proposed annexation to City Council.
3. ~~Final~~ Action shall be taken by Council regarding to pass a Resolution of ~~Intention~~ Application to LAFCo for annexation, or advise property owners that a City application will not be filed. Property owners may apply directly to LAFCo by petition in accordance with petition thresholds in the Cortese-Knox-Hertzberg Local Government Reorganization Act of 2000.
4. Following City Council approval ~~of annexation request~~, including any accompanying General Plan amendment, pre-zoning ordinance and/or environmental document, the City shall prepare and transmit ~~the an~~ request-application to LAFCo for its consideration and decision.

GM-3b **Required materials for consideration of non-urbanized land area annexations of ~~non-urbanized land areas~~.** The following shall apply to annexation ~~requests-proposals~~

where the land proposed to be ~~added-annexed~~ to the City is not developed with urban land uses ~~prior to annexation~~:

1. The City, ~~or experts under contract to the City,~~ shall prepare an ~~in~~ detailed annexation study addressing items "a" through "f" listed below. The annexation study costs, including City administrative costs, shall be borne by the property owner(s) proposing the annexation.
 - a. A ~~comprehensive and detailed analysis of the~~ fiscal impacts analysis of the annexation, addressing the full range of projecting revenues and expenditures for proposed development in the annexed territory. One-time capital costs of facilities, as well as ~~recurring~~ operating costs and revenues, including tax revenues and parcel assessments, shall be evaluated;
 - b. A study and/or proposal for tax-sharing agreements with other taxing entities, such as the County;
 - c. An accompanying General Plan Amendment, if requested or appropriate;
 - d. A proposed preliminary development plan, including phasing if appropriate;
 - e. An assessment of the City's capacity to provide facilities and services, including: wastewater collection and treatment; stormwater management; water supply and distribution; streets and circulation; fire protection; police services; parks; and others as appropriate;
 - f. A rezoning ordinance. ~~The costs of preparing the annexation study, including City administrative costs, shall be borne by the property owner(s) requesting the City to consider the annexation.~~
2. An environmental document pursuant to CEQA.
3. A Planned Development, master plan, or other comprehensive plan for development ~~or Specific Plan~~ may be required for any land area greater than five acres.

GM-3c **Criteria for annexation of undeveloped land areas.** ~~All undeveloped lands proposed for annexation shall be added to the~~ The City shall apply for annexation of undeveloped lands only if the following criteria are met. The proposed annexation area shall:

1. Be within Urban Services Boundary and adjacent to existing urban development; unless the annexation area is City owned land for the purposes of resource/habitat management or for the purpose of fulfilling the City's greenbelt policies.
2. Not exceed the City's capacity to provide services and infrastructure to accommodate proposed development.
3. Have annexation timed so that availability of services and infrastructure is concurrent with need.
4. Have a positive or neutral fiscal impact, or other overriding public benefits.
5. Be in compliance with General Plan policies.
6. Not include prime agriculture land (Storie Index 60 or higher) other than with designation and prezone as Agriculture-Exclusive [A-E], Natural Resources [NR], or

Public Facility [PF]. The Natural Resource and Public Facilities designation may be applied for uses consistent with the Open Space Element, the Resource Conservation Element, and City plans adopted pursuant to these Elements.

GM-3d **Criteria for annexation of areas with existing urban development.** ~~All lands with existing urban development proposed for annexation shall be added to~~ The City shall apply for annexation of existing urban development only if the following criteria are met. The proposed annexation area shall:

1. Be within the Urban Services Boundary and adjacent to existing city boundary.
2. Have facilities brought up to City standard prior to or concurrent with annexation.
3. Have costs of service extensions borne entirely by owners of annexing properties and not by existing City taxpayers or ratepayers, or, have a financing mechanism in place prior to annexation.

POLICY GM-4 URBAN SERVICES AND URBAN SERVICES BOUNDARY

Objective. Define the boundary ~~that limits the extent of~~ City services and urban uses, within the City's incorporated area and ~~Sphere of Influence~~ SOI. Extend City services ~~to urban uses within the urban services boundary when provision of~~ only when ~~those services~~ they will not exceed the City's planned system capacities.

GM-4a **Urban Services Boundary.** The City shall maintain an Urban Services Boundary, ~~(USB)~~ (USB) beyond which urban services shall not be provided (except as provided for in Policy GM-4b), and urban development shall not be approved (see Figure GM-b). Rural residential development may be approved outside the Urban Services Boundary only if the development would not require the extension of water, sewer, and other public facilities. The area within the Urban Services Boundary shall be annexed at the time of development.

Any USB changes ~~to the Urban Services Boundary~~ shall be based on an development capacity analysis of site characteristics such as soils type, vegetation, topography (slope) and natural hazards, availability of public water, ~~and sewer~~ and other municipal services, existing property lines, existing land use, and development potential ~~for development~~. The ~~boundary-USB~~ USB shall not be extended into the prime agricultural land or flood-prone areas on the west and south, nor extend past the Mad River on the north. To the east, the ~~boundary-USB~~ USB shall not be extended into the steeper portions of Fickle Ridge, as designated on the General Plan Map. Parts of the Jacoby Creek and Bayside areas are included within the USB urban services boundary.

Only the Agriculture- Exclusive [A-E], Natural Resource [NR], and Public Facilities [PF] land use designations shall be applied to areas outside the Urban Services Boundary and within the Coastal Zone.

GM-4b **Services outside City boundary.** The City shall not extend sewer ~~mains~~ or ~~new~~ water ~~mains infrastructure~~, or provide new service connections ~~to portions of the Planning Area~~ outside the City Limits except under the following conditions:

1. **Emergency sanitary sewer and/or water connections.** The City may provide an emergency sewer or water line extension, when approved by LAFCo, provided under the following conditions ~~are met~~:
 - a. The property is located within the City Urban Services Boundary for water and sewer.
 - b. The property is adjacent to the City limits.
 - c. The on-site sewage disposal system has failed.
 - d. It is not feasible to replace or repair the on-site sewage disposal system as evidenced by a letter from the County of Humboldt Division of Environmental Health.
 - e. The on-site sewage disposal system failure is considered a health hazard by the County of Humboldt Division of Environmental Health.
 - f. The owner has submitted a complete application to the City of Arcata for annexation of the property ~~within 18 months from the date that sanitary sewer service was provided~~.
 - g. LAFCo has approved the emergency sanitary sewer connection.
 - h. The sewer connection shall be sized to only accommodate the failed system.
2. The City may contract to provide sewer services to other service districts subject to the following guidelines:
 - a. Only those areas with existing contracts as of December 31, 1998 shall be served.
 - b. No new contracts for services shall be approved.
 - c. No new connections shall be allowed to the sewer lines in the area between the City Limits and the Arcata Planning Area Boundary.
[Revised by Ordinance No. 1377, September 2008]

GM-4c **Requirements and procedures for modifying Urban Services Boundary.** The following findings must be made to modify the Urban Services Boundary:

1. There are existing or planned urban uses ~~or urban uses designated on the land use plan map~~ for the area being considered.
2. There is sufficient existing or planned infrastructure capacity to extend water, sewer, police protection, and other services, without reducing service standards for other areas.
3. The area to be served is adjacent to existing urban development.
4. The area to be served is within the City limits or Sphere of Influence SOI.
5. City services extensions will not adversely impact natural resources in the area.

2.6 IMPLEMENTATION MEASURES

#	IMPLEMENTATION MEASURE	RESPONSIBLE PARTY	TIME FRAME
LU-1	Annexation Procedures (LUC Amendment) Add Update City annexation criteria and procedures to in the City's LUC (formerly LUDG) Land Use Code for consistency with General Plan policies.	Community Development Dept./ Planning Commission	Year 1
GM -1	Sphere of Influence/Planning Area Application Review Develop memorandum of understanding (MOU) between City of Arcata, Humboldt County, and LAFCo for review of development and use permit applications. Continue to participate in the County application review process that provides for City review and input on all proposed actions in Sphere of Influence/Planning Area lands. Submit mapping showing the Planning Area boundary and request that all land use and development applications received by the County be referred to the City.	Community Development Dept.	Year 1 & Ongoing
GM-2	Jacoby Creek Water Service Area Develop a memorandum of understanding (MOU) between the City of Arcata and the Jacoby Creek County Water District that addresses how services will be provided long term once the Davis-Grunsky loan payoff occurs.	Community Development Dept.	Year 5
GM-2	Memorandum of Understanding (MOU) with County Negotiate a MOU with Humboldt County that provides for City review and input on all proposed actions on Sphere of Influence/Planning Area lands.	Community Development Dept.	Year 1
GM-3	Urban Services Boundary Update Title 5 and Title 7 of the Arcata Municipal Code to define and describe criteria for modifying Urban Services Boundary, consistent with General Plan policy.	Community Development Dept./ Planning Commission	Year 1
GM - 43	Update Sphere of Influence Boundary Coordinate with LAFCo to c omprehensively evaluate the Sphere of Influence Boundary to ensure that City growth and resource protection objectives are being met. In coordination with LAFCo as part of the next municipal service review and SOI update process evaluate potential SOI reductions in the following areas: east of Aldergrove/Ericson Way, Bay School Road, east of Buttermilk Lane near Baywood golf course, and Bracut.	Community Development Dept.	Every 5 Years
GM-5	Prezoning Ordinance Prepare and adopt a prezoning ordinance that does not allow resource lands to be prezoned, but requires consideration of land use designations at time of annexation.	Community Development Dept.	Year 2
GM-6	Local Agency Formation Commission Submit changes in Sphere of Influence and updates of maps to LAFCo, and request that maps be updated.	Community Development Dept.	Year 5

^a Cal Poly Humboldt Enrollment 2022: <https://irar.humboldt.edu/data-enrollment>. Polytechnic Prospectus: <https://www.humboldt.edu/sites/default/files/hsupolytechnicprospectus.pdf>