

MEMORANDUM

Presented at the June 1, 2016 City Council meeting

Date: May 26, 2016

To: Arcata City Council

From: Forest Management Committee (FMC)

Re: Forest Management Committee Annual Report to the Arcata City Council for 2015 Activities

Forest Management Committee

Chair: Michael Furniss
 Jack Naylor
 Lowell Diller
 Russ Forsburg
 Yana Valachovic
 Danny Hagans
 Dennis Halligan, Vice Chair

Staff Liaison: Mark Andre

Introduction

The following information is a summary of the various projects and activities that involved the Forest Management Committee (FMC) during 2015. The Committee meets monthly on the second Thursday each month at 7:00 am and also conducts public field trips and evening meetings on occasion.

General

- A timber harvest was completed; 295 thousand-board-feet (MBF) gross scale total was harvested from the Arcata Community Forest (ACF). The harvest was predominantly redwood (75%); Douglas fir (10%) and whitewoods (Sitka spruce (14%).
- Delivered 9,000 metric tonnes (mT) of forest carbon to various buyers ranging from 1 mT to 5,500 mT transactions.
- \$ 20,200 in local cash contributions were received to apply towards the forest trail and forest expansion efforts.

- Annexed the Sunnybrae Unit (330 acres) so now that portion of the ACF is within the City limits and the Arcata Municipal Code applies.
- The City received \$245,000 in grant funds for the 20 acre addition to the ACF along Jolly Giant Creek (Lima) which is expected to close in July 2016.
- The Committee recommended the acceptance of a donation of 40 acres of timberland from Ms. Cherry LaForge-Klein to add to the JCF.
- Developed additional trail connectivity to the Sunny Brae unit from Panorama Ct.
- The Committee continued worked on the Forest Management Plan (FMP) update.
- The Rainforest Alliance conducted a forestry audit with positive results.
- The Committee recommended the City acquire 47 acres of private timberland between the ACF and HSU known as the Forsyth property.
- Three acres of young plantation were pre-commercially thinned to improve growth in the JCF.
- Continued to work with HSU on a potential 967-acre City/College Forest partnership acquisition in the headwater region of the Jacoby Creek watershed. The City was successful in receiving a grant from the California Resources Agency (Greenhouse Gas Fund) in the amount of \$800,000 to apply towards this project.
- Provided input on the County of Humboldt's Medical Marijuana Ordinance as it relates to TPZ land.

Research and Monitoring

- Staff continued to monitor pacific fisher (located now in all forest tracts) northern spotted owls, barred owls and other raptors.
- The oldest (90 years) continuous forest inventory plots in the western U.S. are located on the ACF and a paper is being published on the information yielded by this 90 year study.

Roads/Trails/Watershed/Vegetation

- Continued development on the ridge route, a recreational trail plan connecting City-owned properties throughout Arcata (Council Priority).
- Over 17 miles of roads and trails continue to be maintained at a high standard and 800 linear feet of road received rock surface application. The City also rocked and graded ½ mile of the Jacoby Creek canyon road from the rock quarry to the County road.
- Several community workdays involving **hundreds of volunteer hours** helped the City remove invasive plants, build trails and assist with litter cleanup.
- Approximately 4 acres of the Jacoby Creek rock quarry were landscaped with topsoil and native plants and conifers making significant progress towards the ultimate final reclamation plan completion.

- Several local middle school students utilized the ACF/JCF/SBF for science fair projects related to forest ecology. Staff plans to exhibit the displays at the Arcata Marsh Interpretive Center.

Education/Interpretation/Recreation

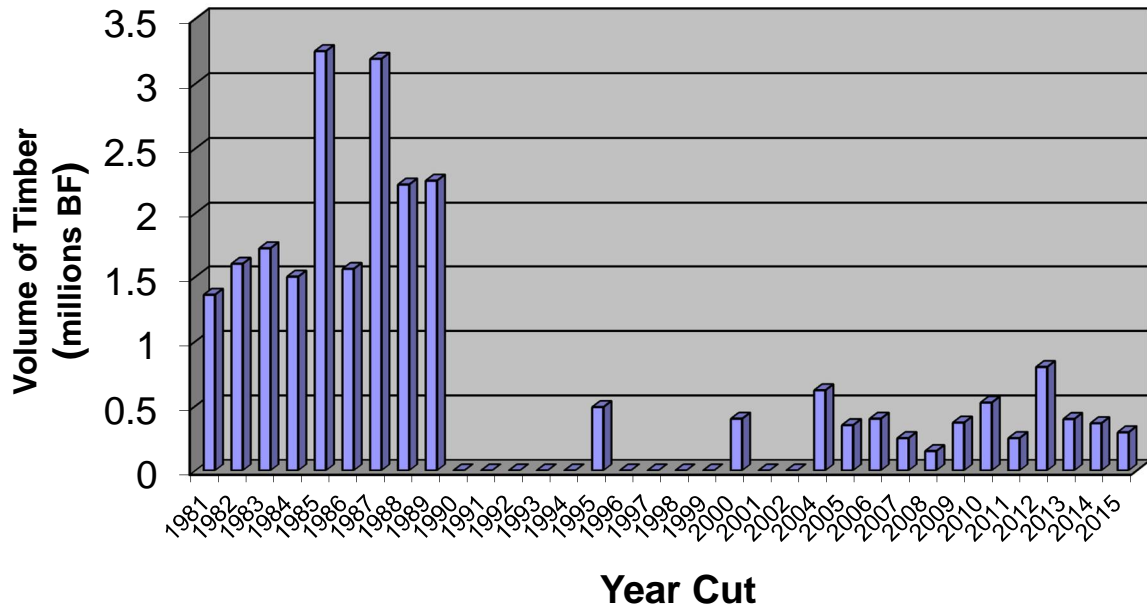
- Staff led two forest practice tours to local college classes and two lectures at Humboldt State University.
- Sponsored one spring forest ecology walk in the Jacoby Creek Forest.
- Staff assisted the County of Humboldt with efforts to plan and design the trail system for the County-owned McKay Community Forest.

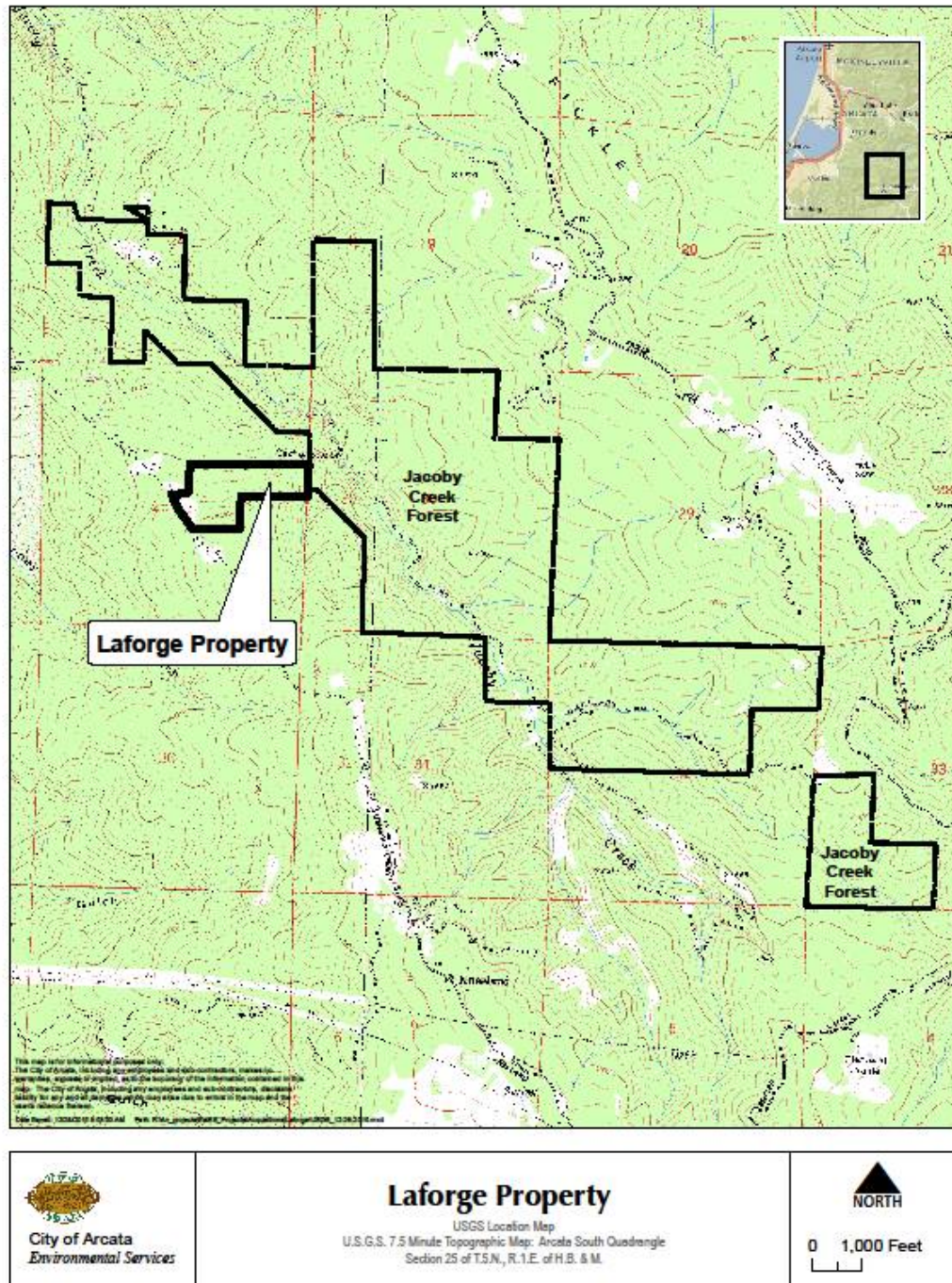
2016/2017 PLANNED ACTIVITIES

The Committee will:

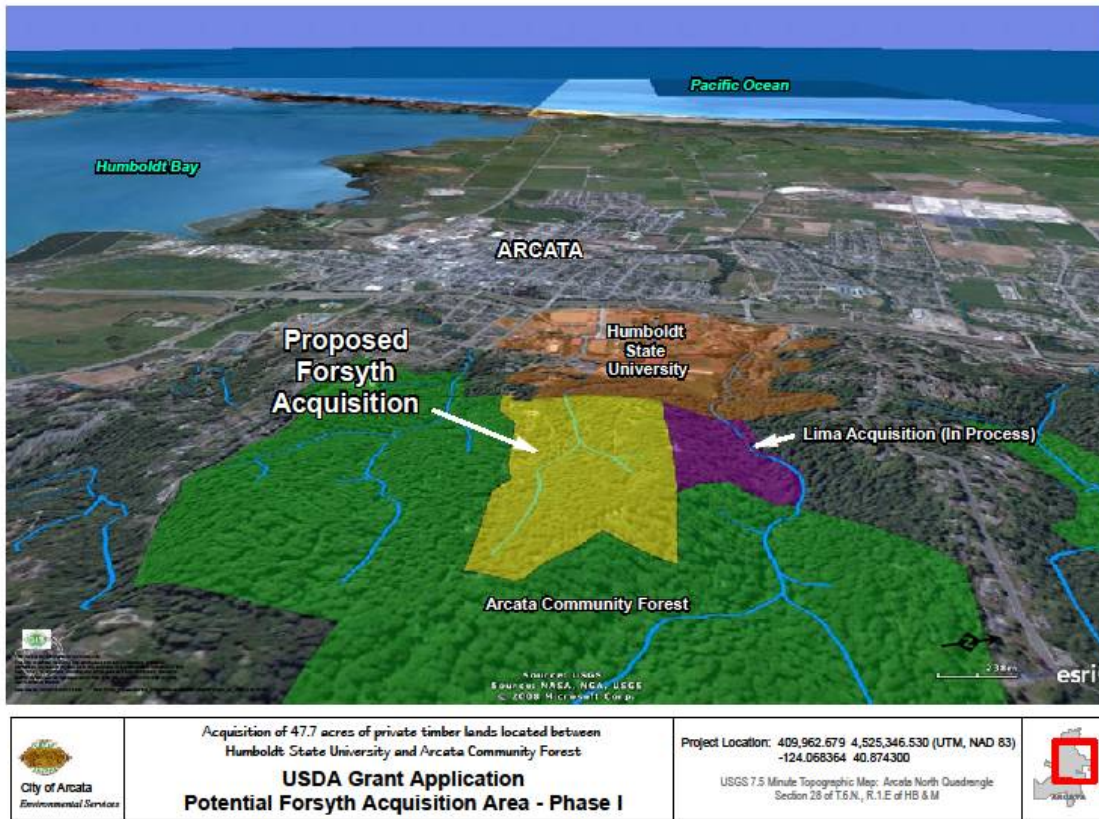
- Lead a Forest Management Committee public walk in the ACF to discuss silviculture and desired future conditions of forest stands in relation to the FMP update.
- Provide input on the FMP update and the development of a focused five-year management strategy, budget and revenue plan that provides for adding to the reserve fund.
- Continue to be involved in the Non-industrial Timber Management Plan (NTMP) amendments.
- Evaluate and provide advice on potential land acquisitions. Strategic acquisitions improve the City's ability to effectively manage landscapes and timberland continues to be a good long-term investment.
- Strengthen cooperative partnership with Humboldt State University to involve students and faculty in additional forest research projects,

Community/Jacoby Creek Forest Timber Harvest Activity 1981-2015





Laforge-Klein donation property.



City employees milling blow down logs at Corp yard mill for bench and bridge material.



ACF last load 2015.

Current Concepts Shaping Arcata's Management

Ecosystem Management and Restoration

Historical Range of Variation
- pre-settlement conditions (Redwood NP) provides reference target

Ecological Restoration
- structure, function, composition and connectivity

Disturbance Management
- fuel reduction, invasive control



Post harvest-road rocking ACF



JCF rock Quarry reclamation.



Community-based forestry is a participatory approach to forest management that strengthens communities' capacity to build vibrant local economies—while protecting and enhancing their local forest ecosystems. By integrating ecological, social, and economic strategies into cohesive approaches to forestry issues, community-based approaches give local residents both the opportunity and the responsibility to manage their natural resources effectively and to enjoy the benefits of that responsibility. -Aspen

Volunteer trail work day in the SunnyBrae Unit- 3 mile long Beith Loop Trail



Arcata Ridge Trail volunteers

Key features of Arcata's program

- The community benefits from resources conserved
- Community members support a conservation ethic and take pride in managing land for future generations
- Diverse viewpoints are respected and incorporated into the forest plan. A combination of working forests, special management areas, and ecological reserves create a balanced approach.



Removing litter ACF-Citizen volunteers.