



Figure 6-1
Project Design Features and
Temporary Impact Areas

Project:
City of Arcata
Rail-with-Trail Connectivity Project

WINZLER & KELLY

633 3RD ST
EUREKA, CA 95521
P: 707-443-8326 F: 707-444-8330

0 25 50 100 Ft
1 inch = 100 feet printed at 8.5x11

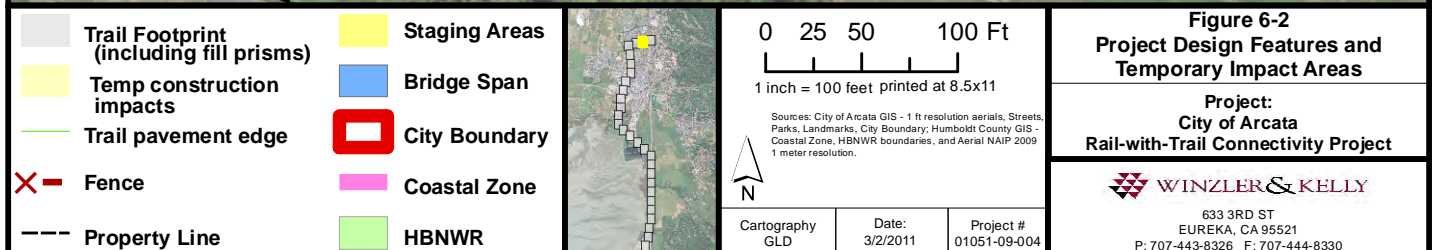
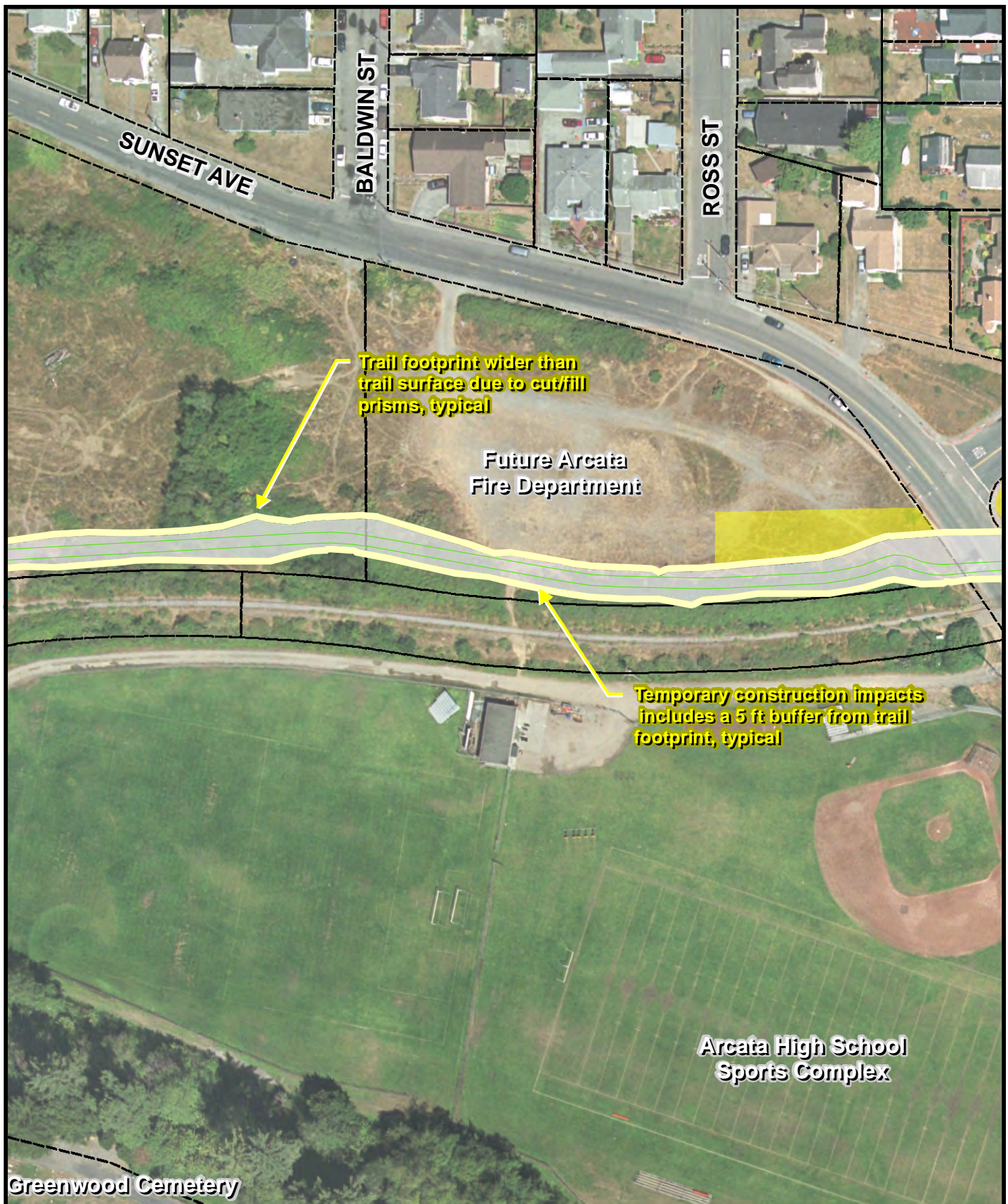
Sources: City of Arcata GIS - 1 ft resolution aerials, Streets, Parks, Landmarks, City Boundary; Humboldt County GIS - Coastal Zone, HBNWR boundaries, and Aerial NAIP 2009 1 meter resolution.



Cartography
GLD

Date:
3/2/2011

Project #
01051-09-004



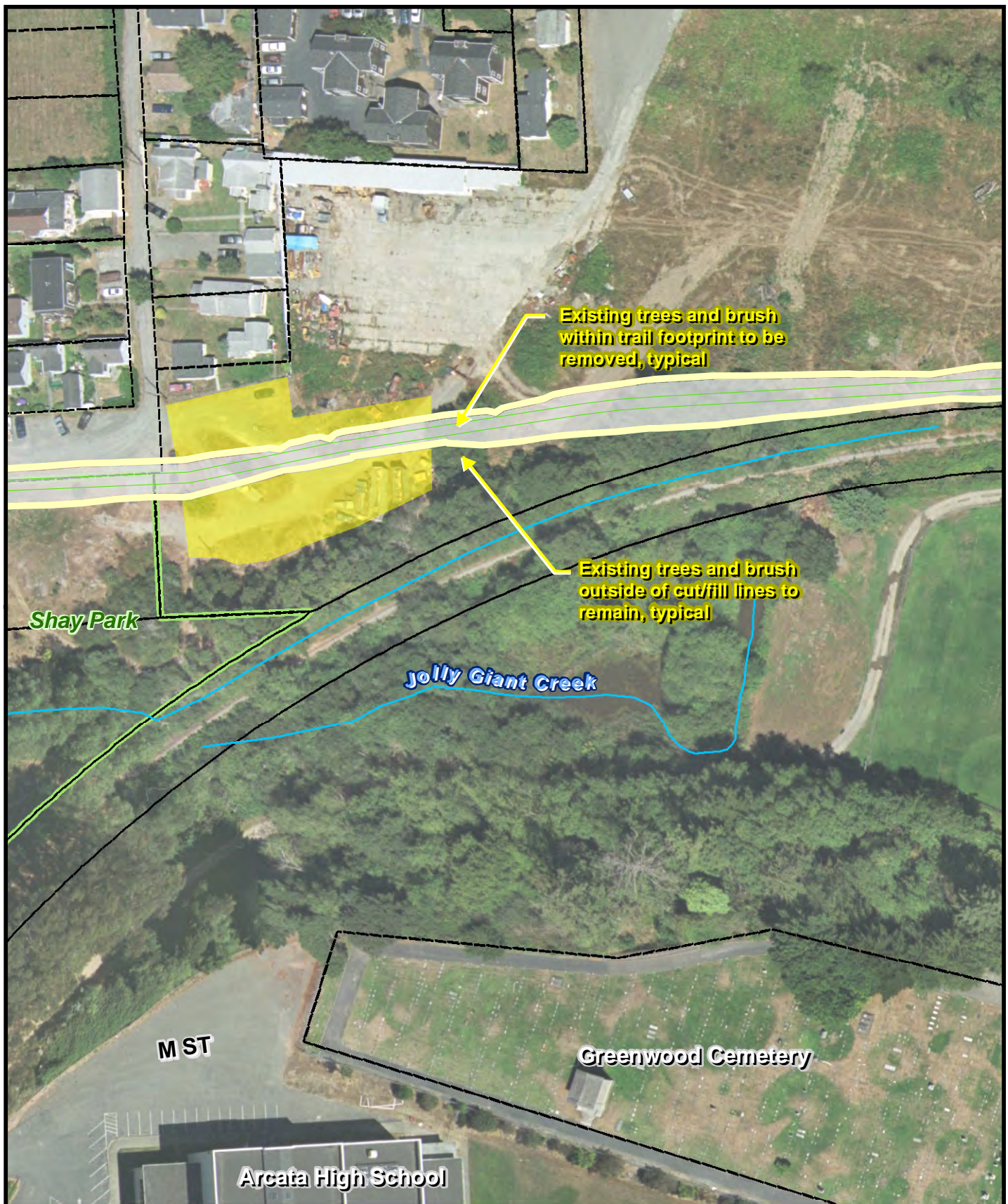


Figure 6-3
Project Design Features and
Temporary Impact Areas

Project:
City of Arcata
Rail-with-Trail Connectivity Project

WINZLER & KELLY

633 3RD ST
EUREKA, CA 95521
P: 707-443-8326 F: 707-444-8330

Trail Footprint
(including fill prisms)

Temp construction
impacts

Trail pavement edge

Fence

Property Line

Staging Areas

Bridge Span

City Boundary

Coastal Zone

HBNWR

0 25 50 100 Ft

1 inch = 100 feet printed at 8.5x11

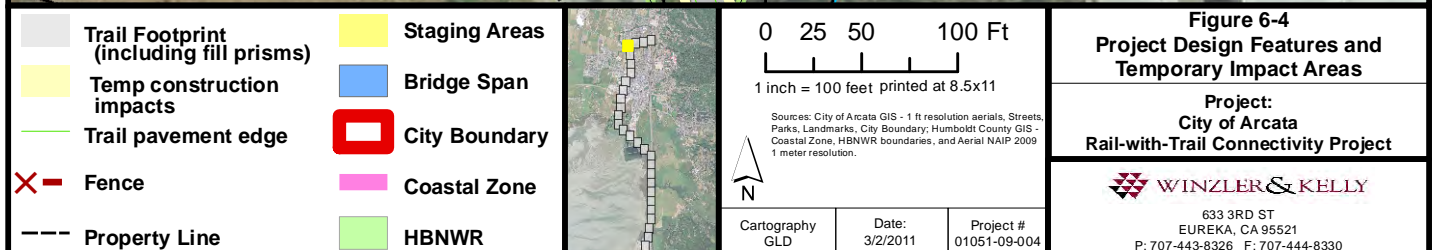
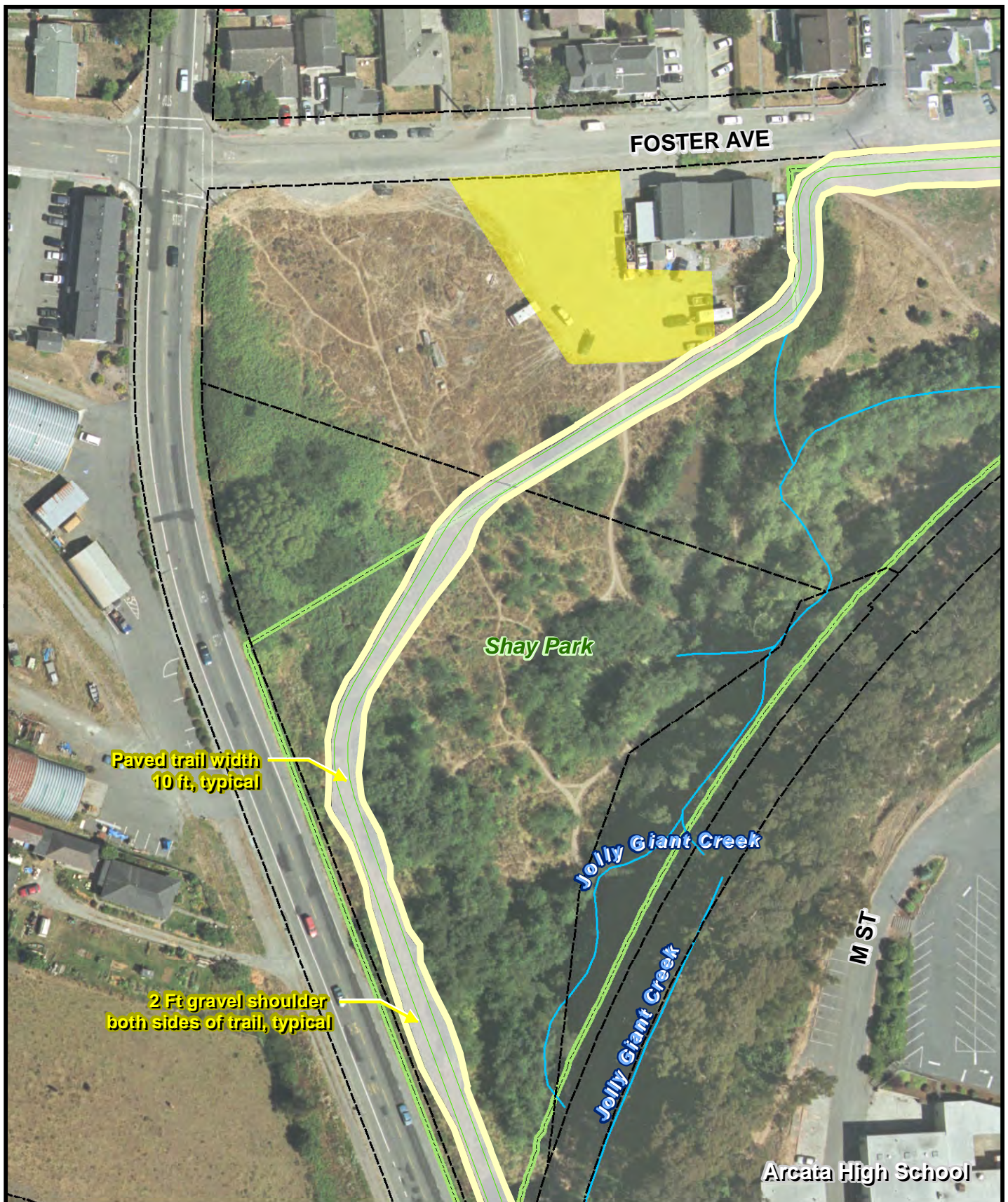
Sources: City of Arcata GIS - 1 ft resolution aerials, Streets,
Parks, Landmarks, City Boundary; Humboldt County GIS -
Coastal Zone, HBNWR boundaries, and Aerial NAIP 2009
1 meter resolution.

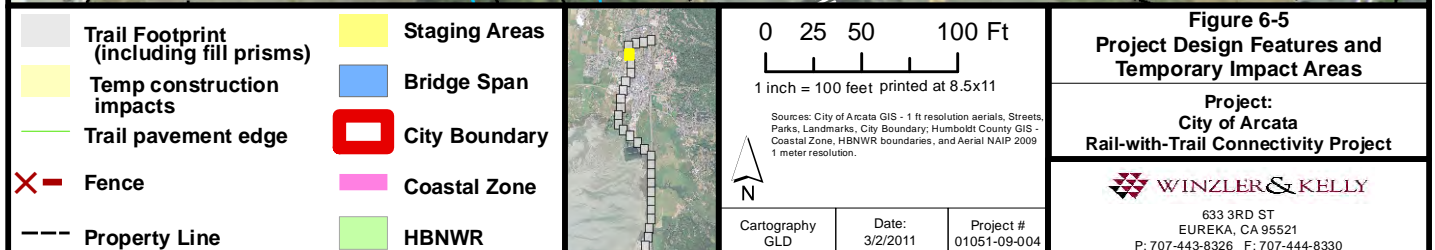
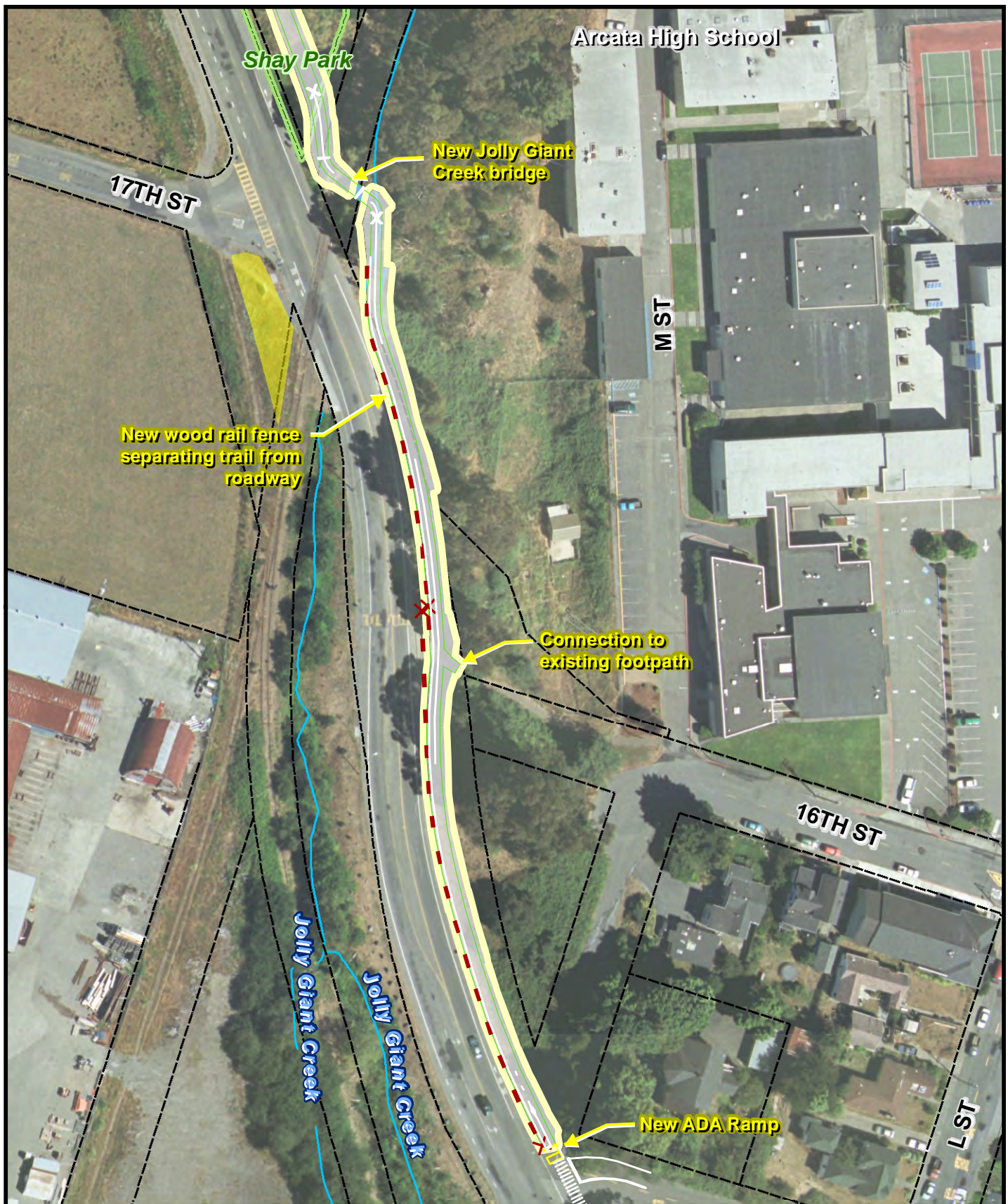


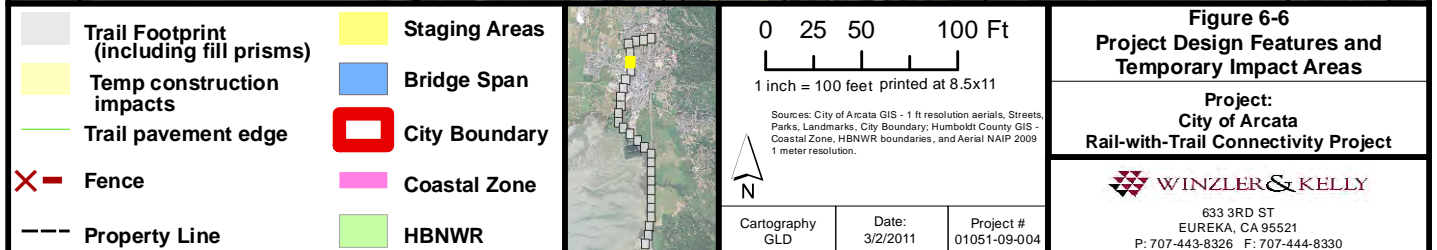
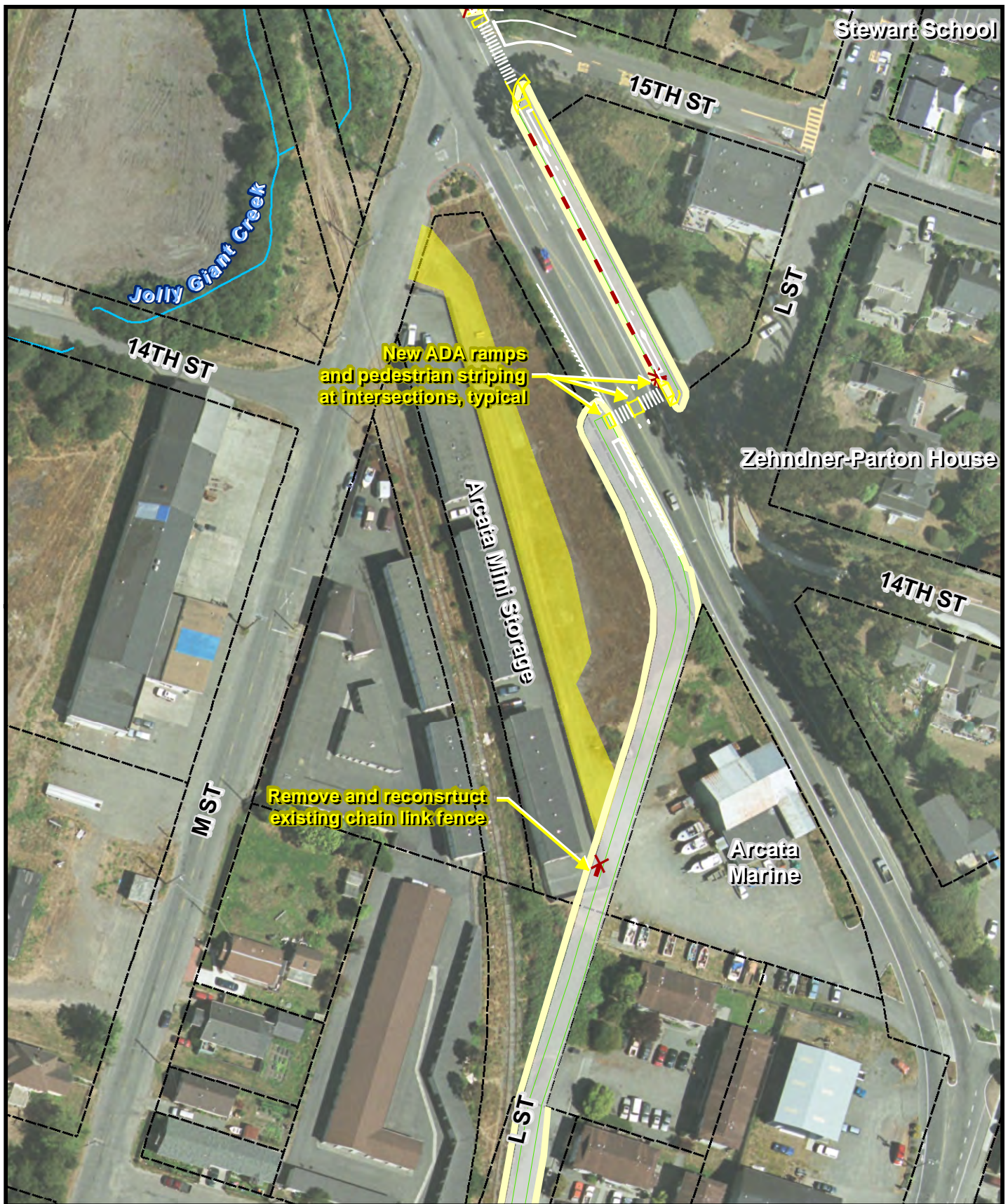
Cartography
GLD

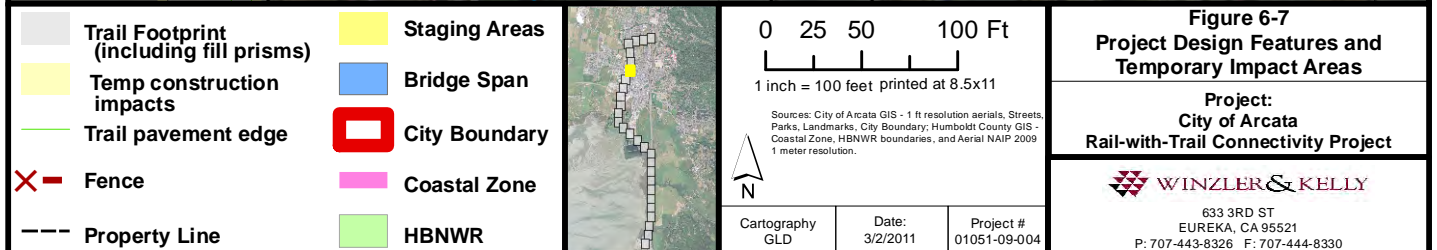
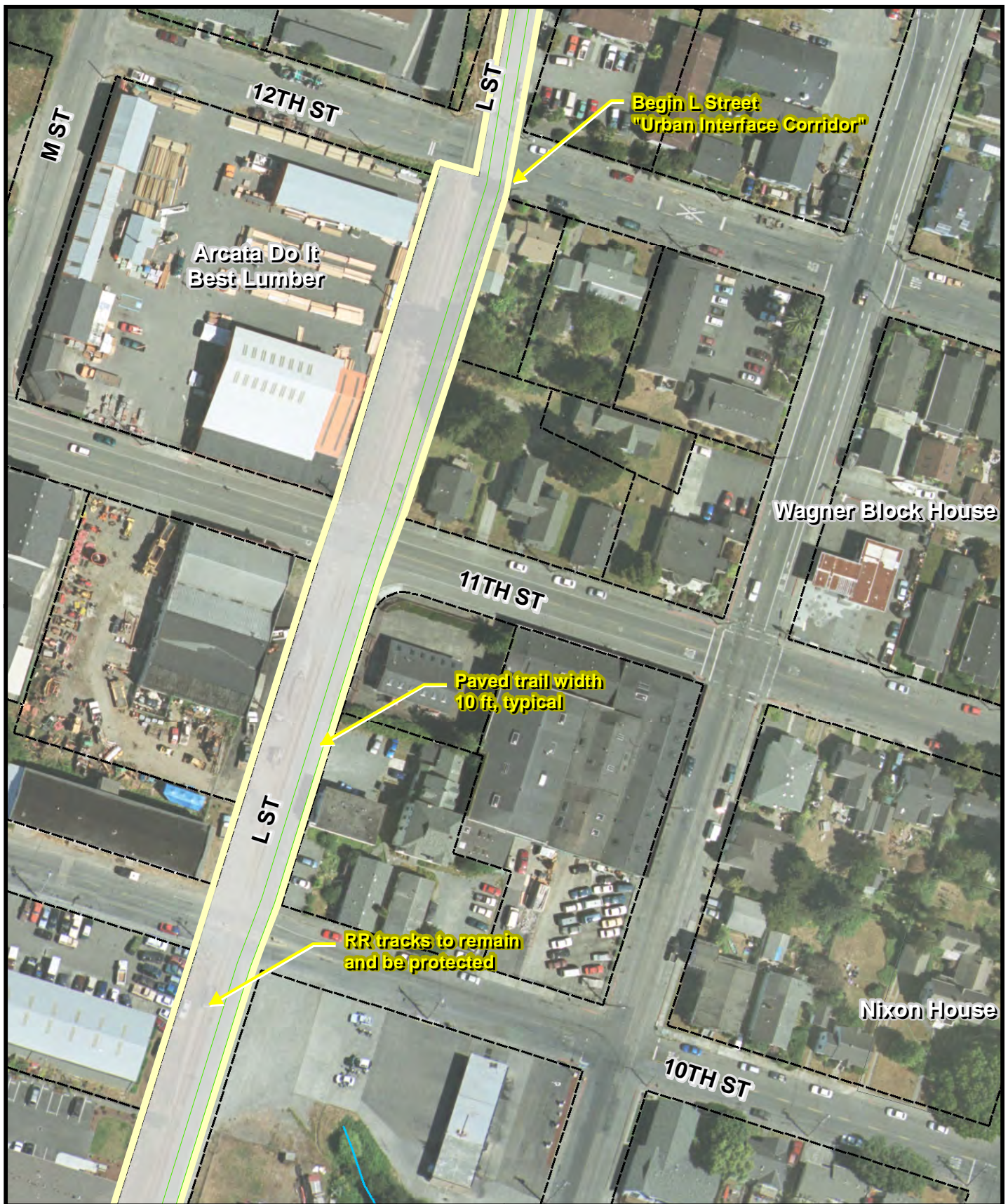
Date:
3/2/2011

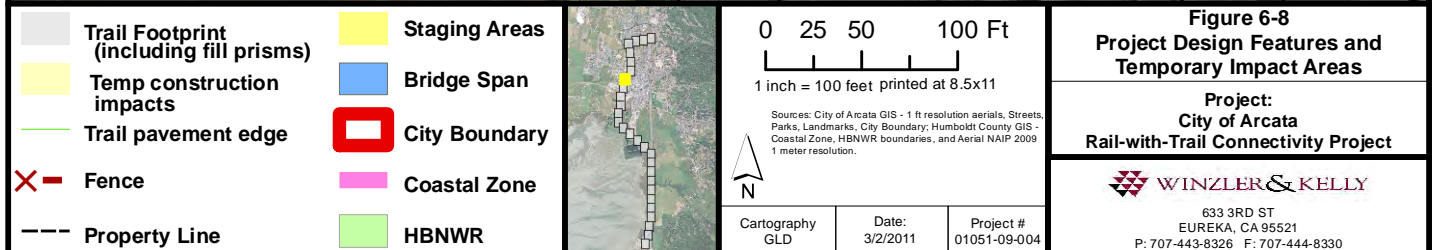
Project #
01051-09-004

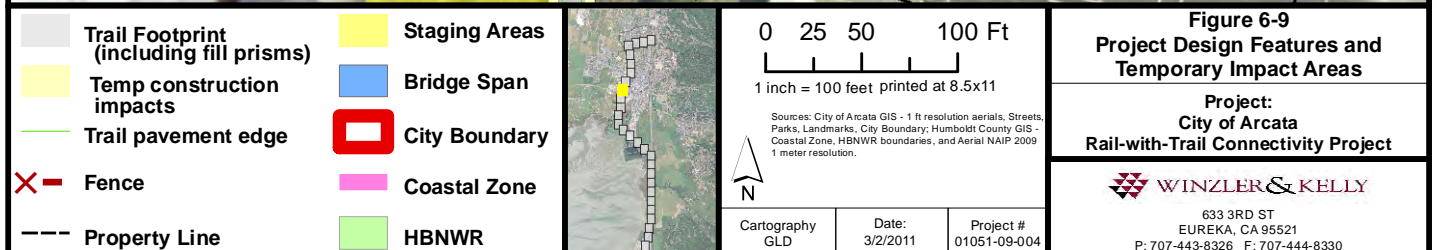


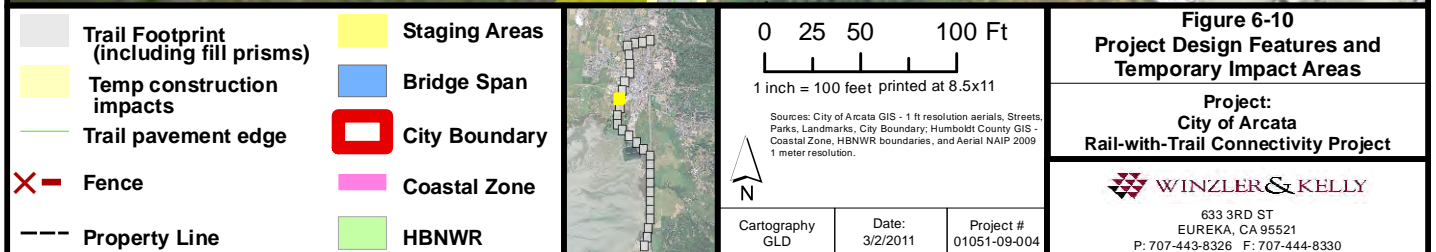


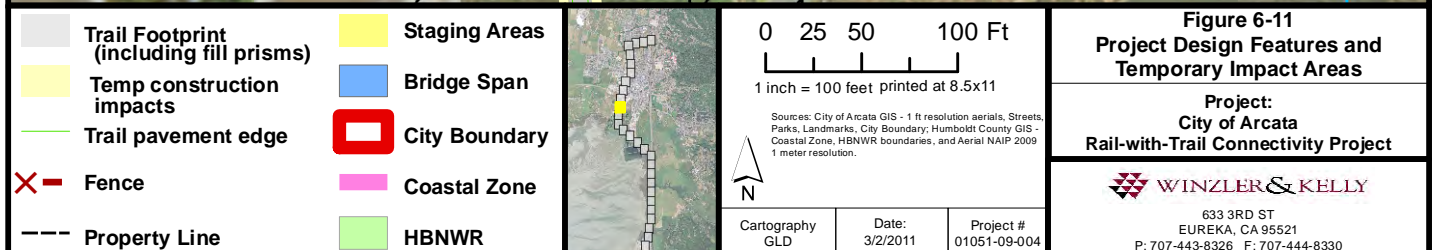


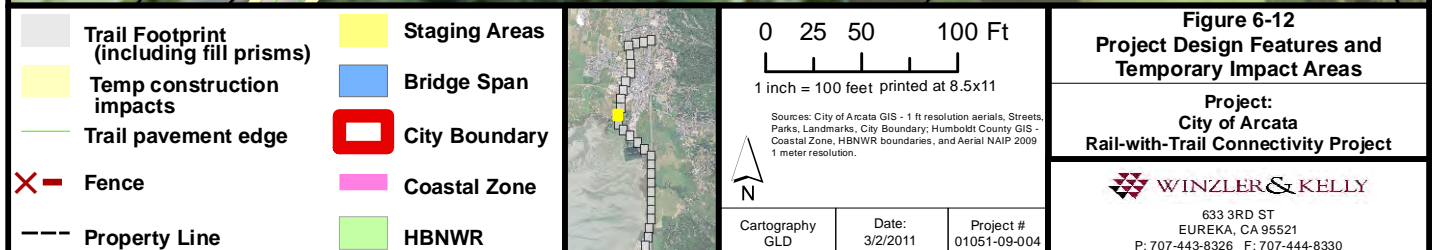
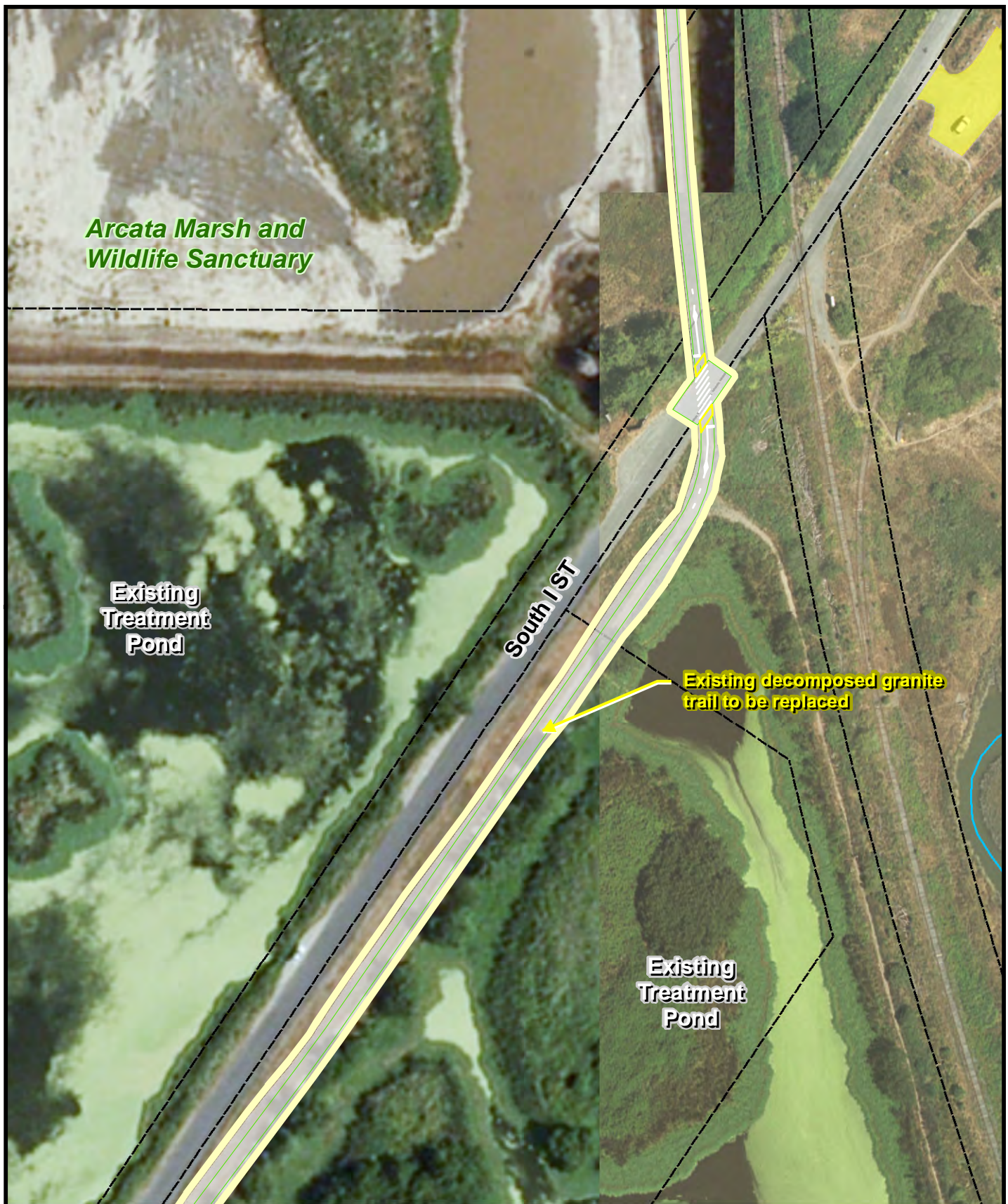


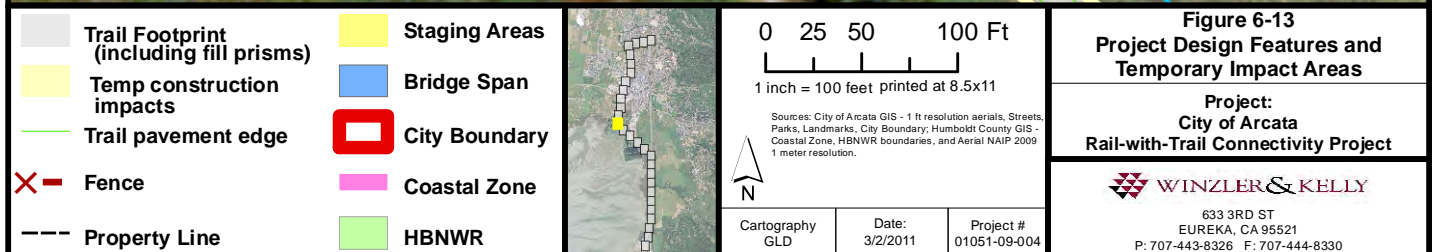


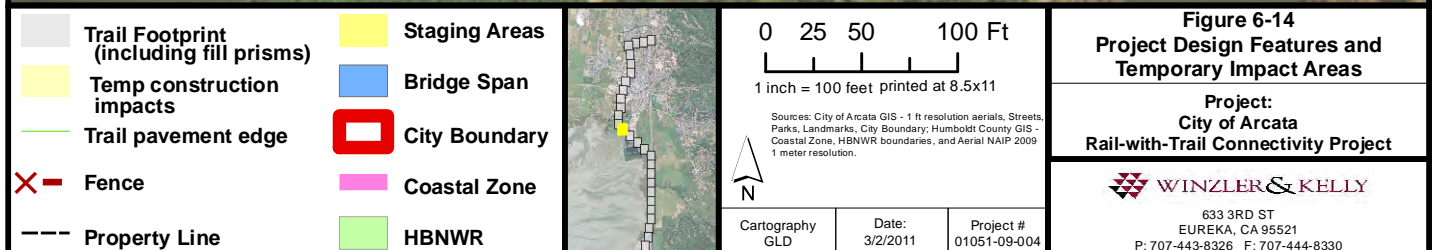


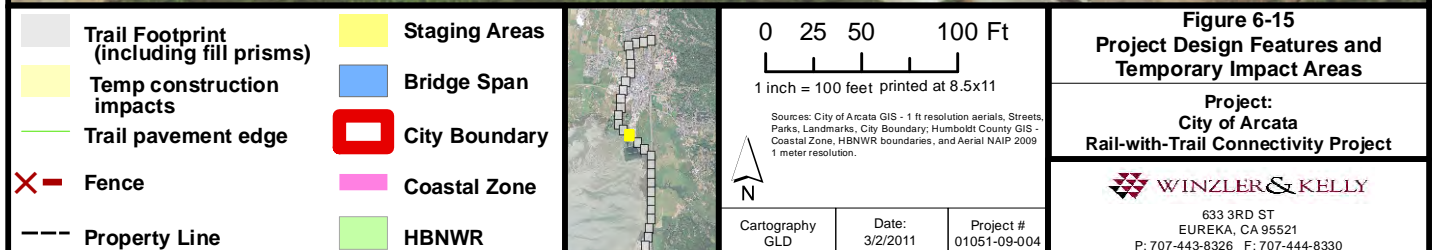


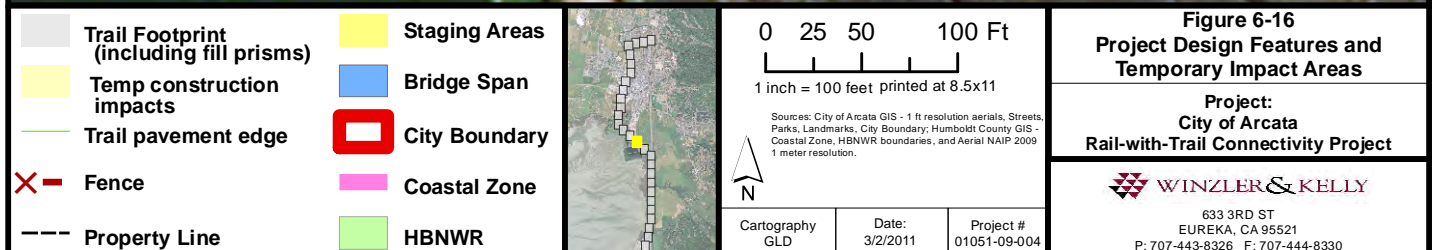
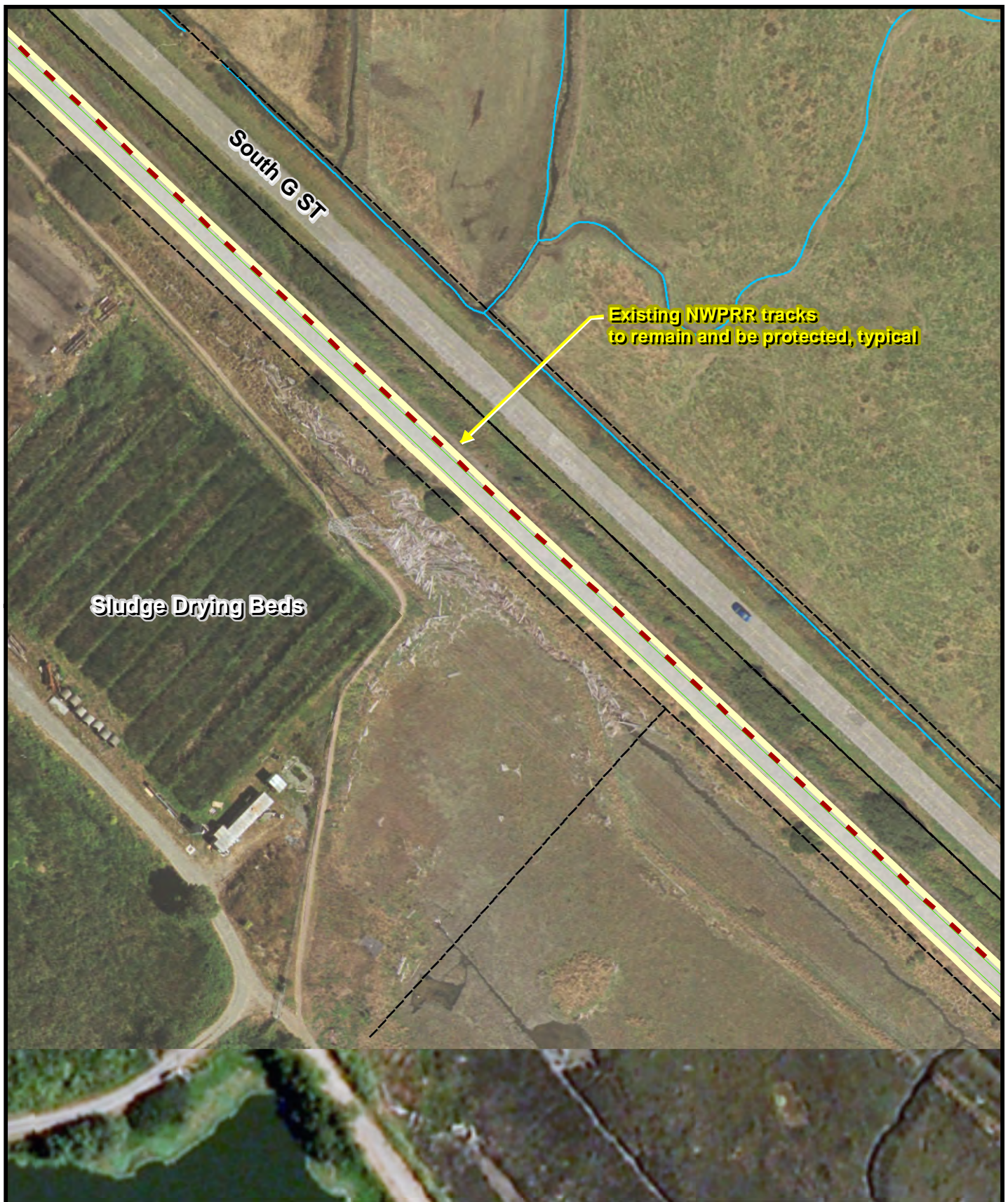












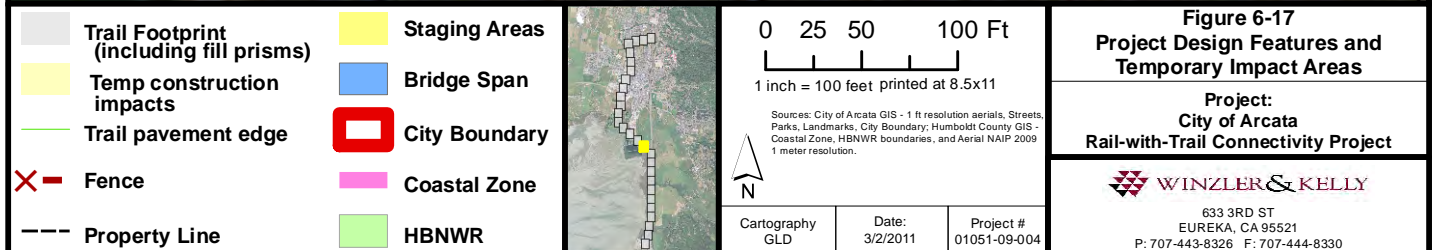




Figure 6-18
Project Design Features and
Temporary Impact Areas

Project:
City of Arcata
Rail-with-Trail Connectivity Project

WINZLER & KELLY

633 3RD ST
 EUREKA, CA 95521
 P: 707-443-8326 F: 707-444-8330

Trail Footprint
 (including fill prisms)

Temp construction
 impacts

Trail pavement edge

Fence

Property Line

Staging Areas

Bridge Span

City Boundary

Coastal Zone

HBNWR

0 25 50 100 Ft

1 inch = 100 feet printed at 8.5x11

Sources: City of Arcata GIS - 1 ft resolution aerials, Streets,
 Parks, Landmarks, City Boundary; Humboldt County GIS -
 Coastal Zone, HBNWR boundaries, and Aerial NAIP 2009
 1 meter resolution.



Cartography
 GLD

Date:
 3/2/2011

Project #
 01051-09-004

