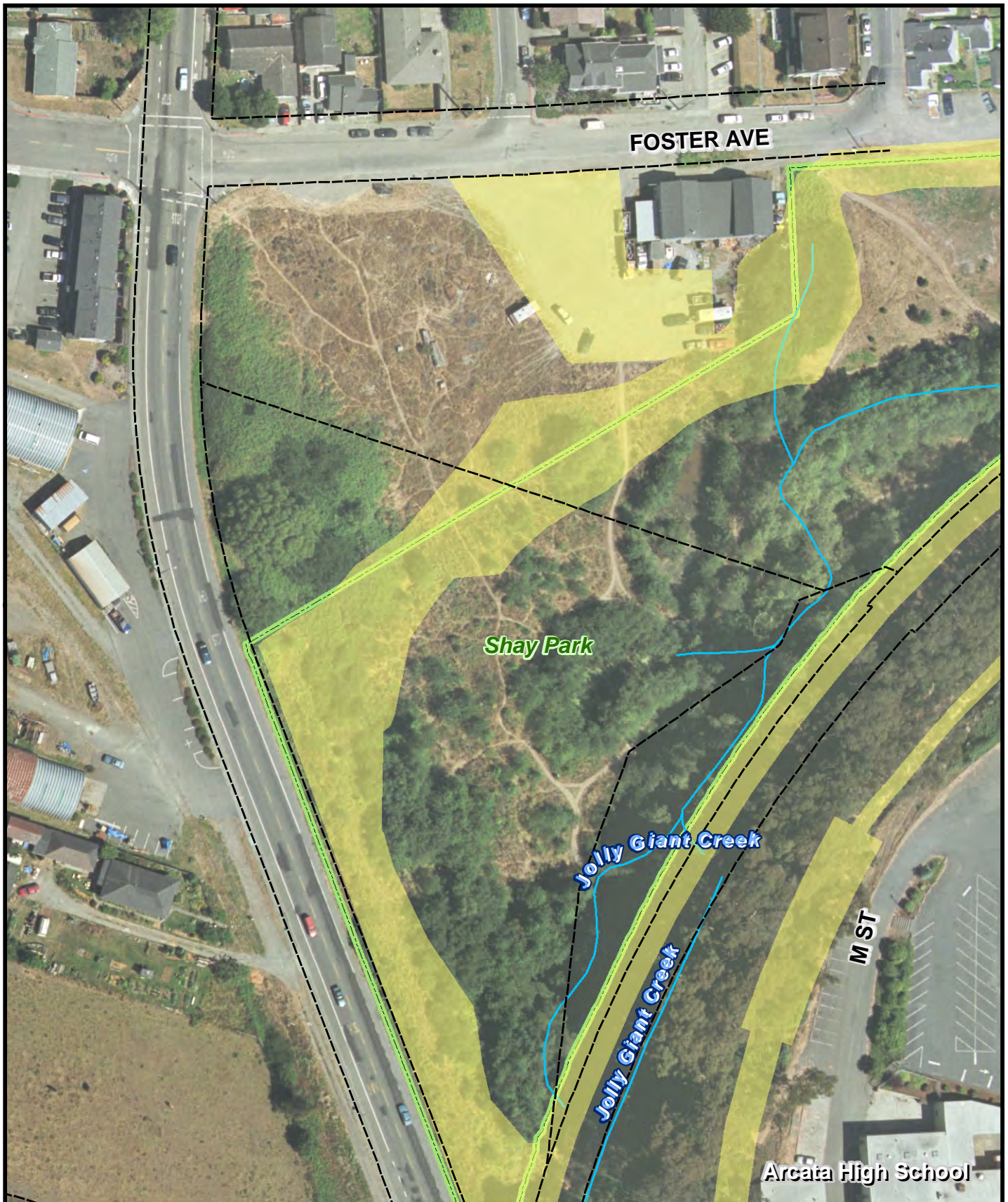




<p>Study Area</p> <p>Property Line</p> <p>Alignment Study Segments</p>	<p>City Boundary</p> <p>City Parks</p> <p>Coastal Zone</p> <p>HBNWR</p> <p>Creeks</p>	<p>Page 3 of 28</p>	<p>0 25 50 100 Ft</p> <p>1 inch = 100 feet printed at 8.5x11</p> <p>Sources: City of Arcata GIS - 1 ft resolution aerials, Streets, Parks, Landmarks, City Boundary; Humboldt County GIS - Coastal Zone, HBNWR boundaries, and Aerial NAIP 2009 1 meter resolution.</p> <p>Cartography: GLD</p> <p>Date: 3/3/2011</p> <p>Project #: 01051-09-004</p>	<p>Figure 2-3</p> <p>Project Study Boundary</p> <p>Project: City of Arcata Rail-with-Trail Connectivity Project</p> <p>WINZLER & KELLY</p> <p>633 3RD ST EUREKA, CA 95521 P: 707-443-8326 F: 707-444-8330</p>
---	--	---------------------	--	---



- Study Area
- Property Line
- Alignment Study Segments
- City Boundary
- City Parks
- Coastal Zone
- HBNWR
- Creeks

Page 4 of 28



0 25 50 100 Ft

1 inch = 100 feet printed at 8.5x11

Sources: City of Arcata GIS - 1 ft resolution aerials, Streets Parks, Landmarks, City Boundary; Humboldt County GIS - Coastal Zone, HBNWR boundaries, and Aerial NAIP 2009 1 meter resolution.

N

Cartography GLD	Date: 3/3/2011	Project # 01051-09-004
--------------------	-------------------	---------------------------

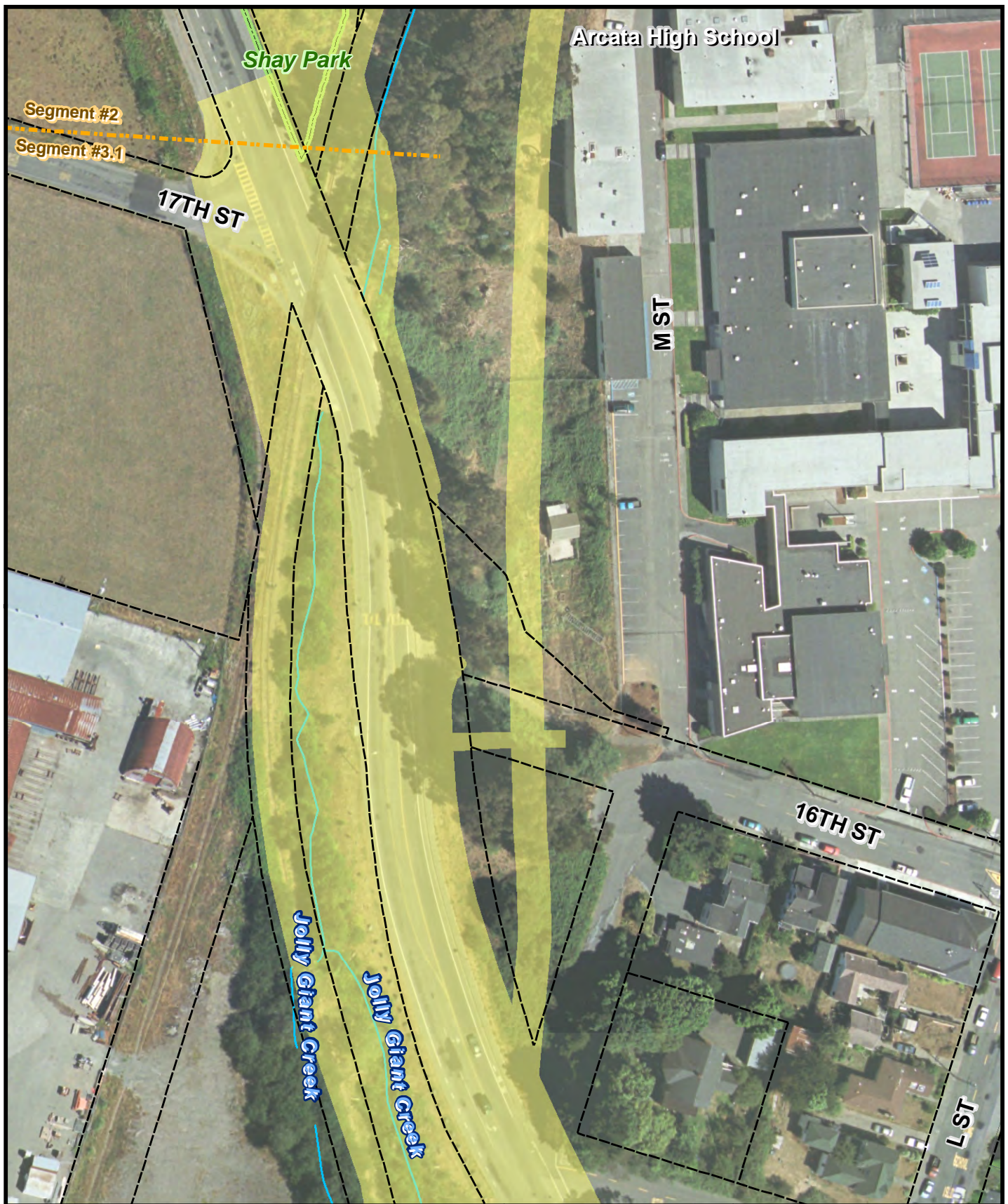
Figure 2-4

Project Study Boundary

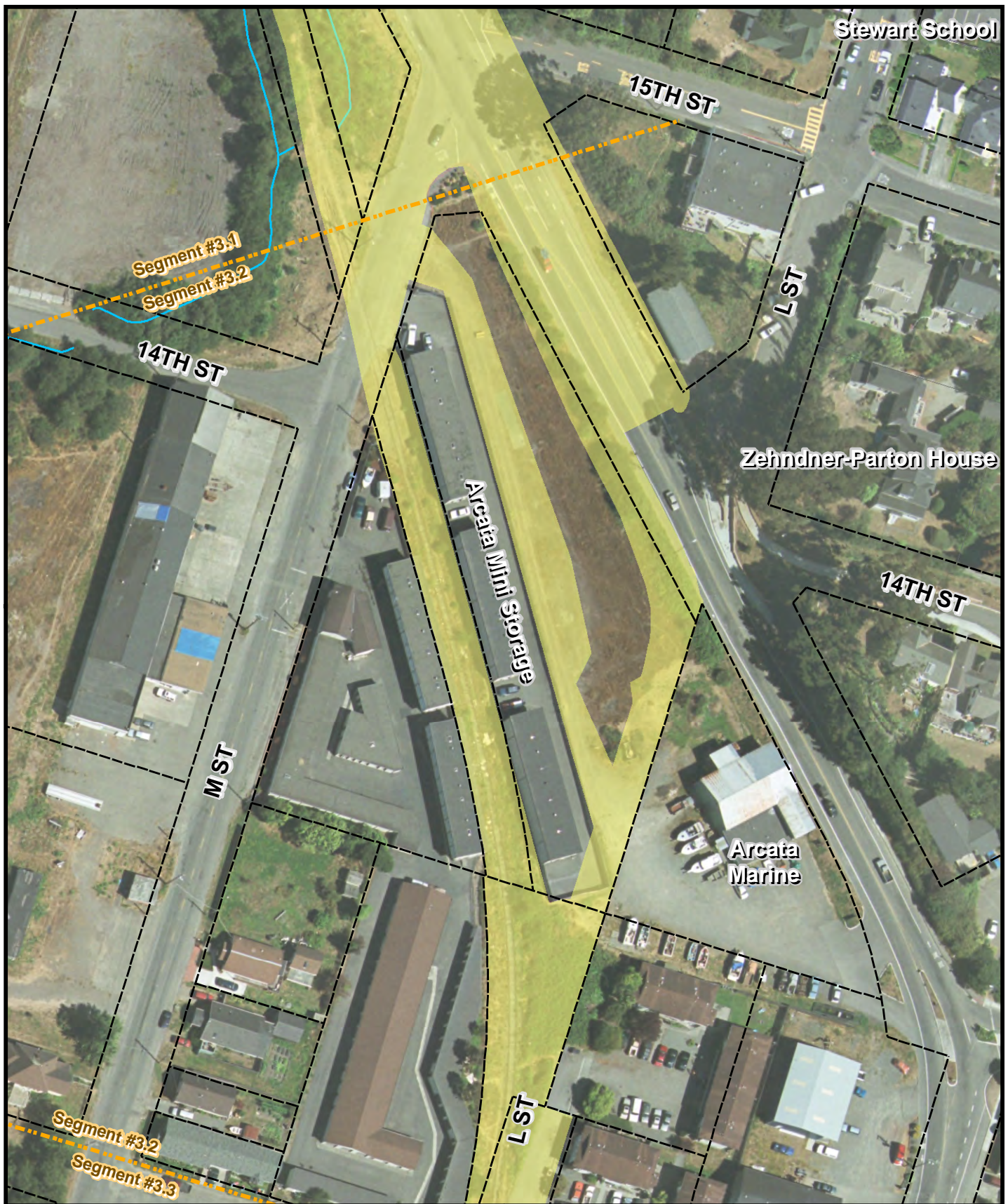
Project:
City of Arcata
Rail-with-Trail Connectivity Project

WINZLER & KELLY

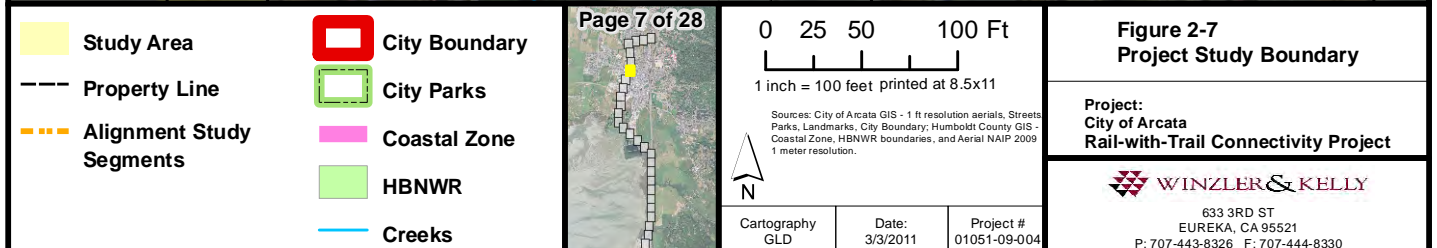
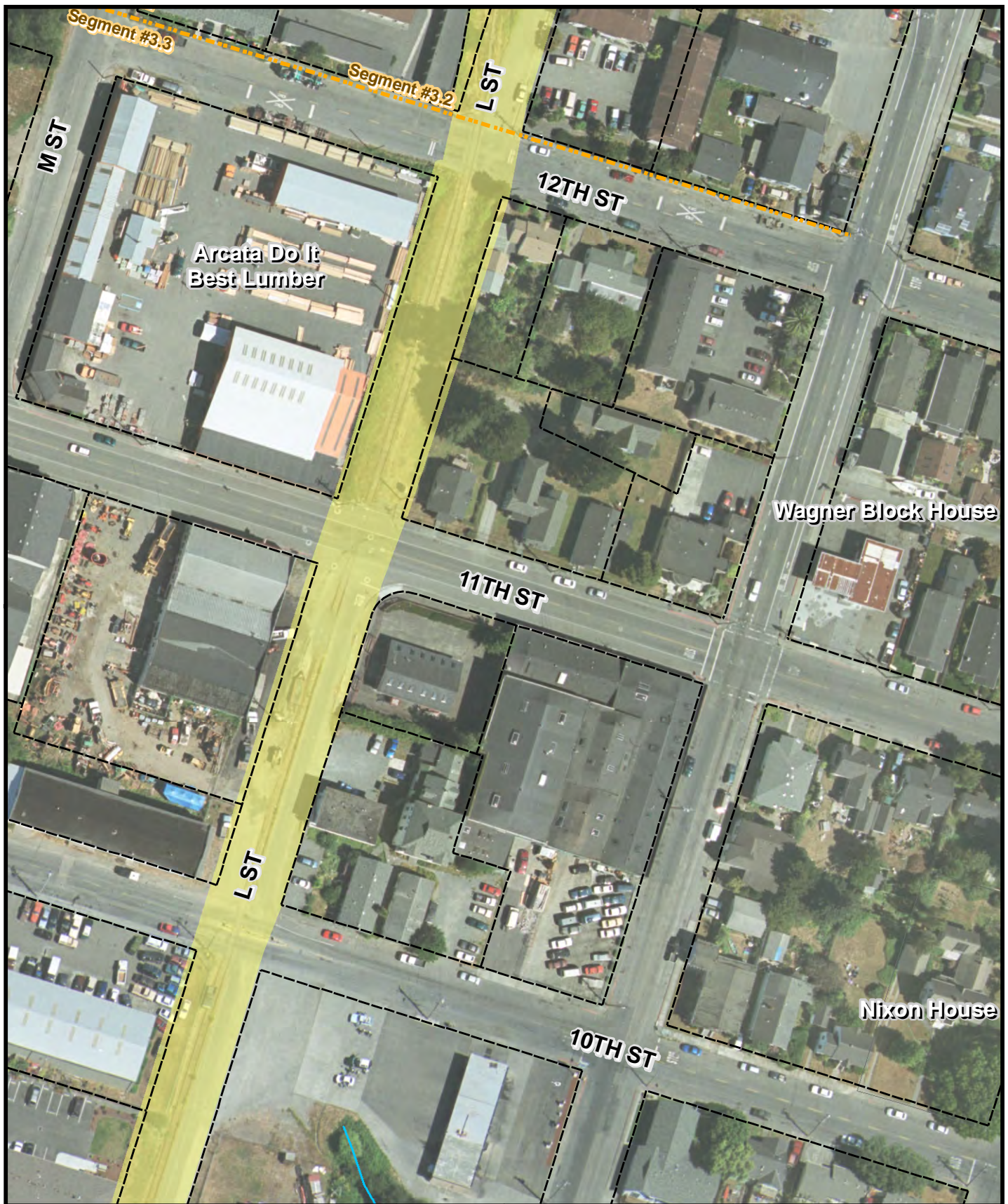
633 3RD ST
 EUREKA, CA 95521
 P: 707-443-8326 F: 707-444-8330

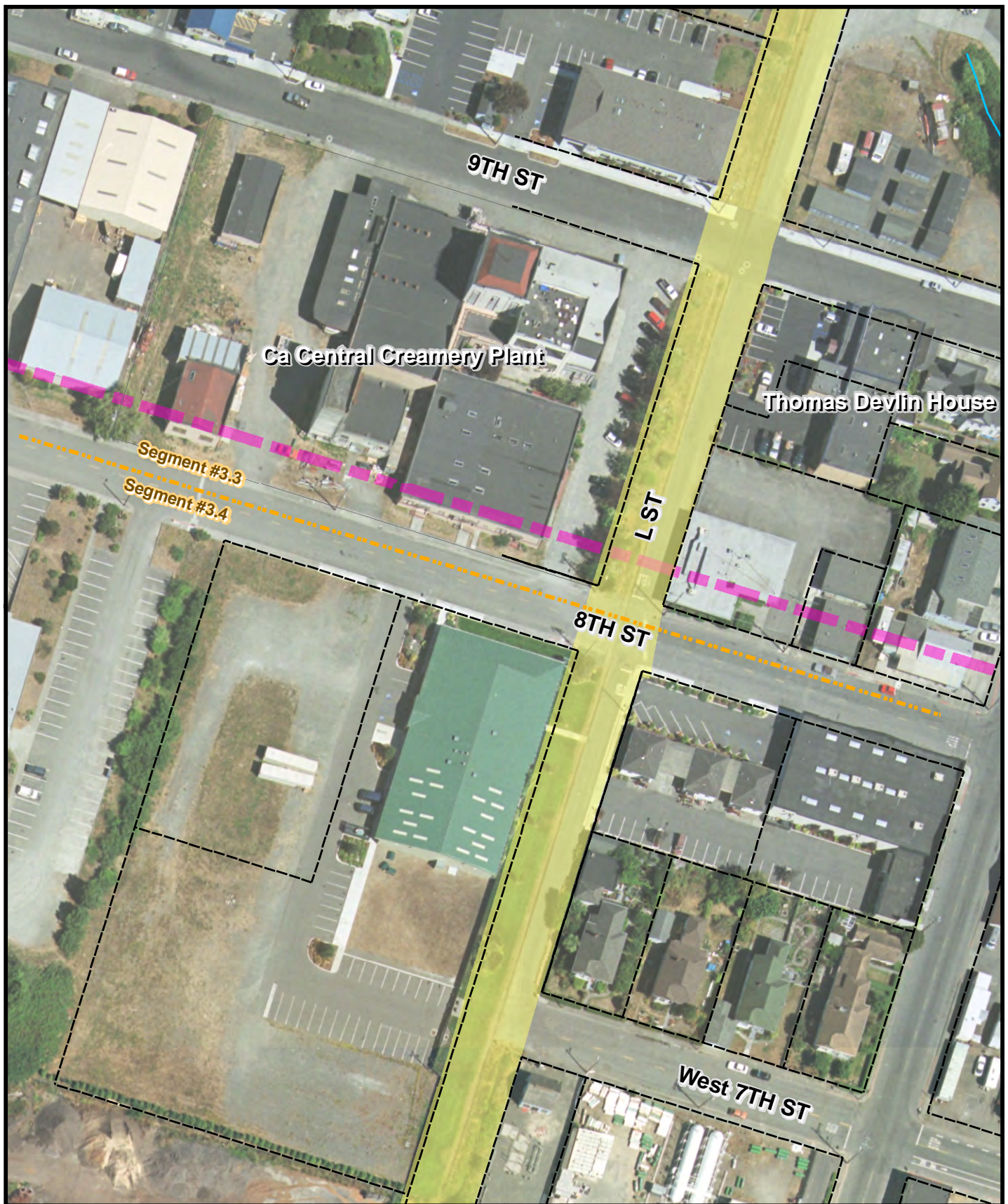


<p> Study Area</p> <p> Property Line</p> <p> Alignment Study Segments</p>	<p> City Boundary</p> <p> City Parks</p> <p> Coastal Zone</p> <p> HBNWR</p> <p> Creeks</p>	<p>Page 5 of 28</p>	<p>0 25 50 100 Ft</p> <p>1 inch = 100 feet printed at 8.5x11</p> <p><small>Sources: City of Arcata GIS - 1 ft resolution aerials, Streets Parks, Landmarks, City Boundary; Humboldt County GIS - Coastal Zone, HBNWR boundaries, and Aerial NAIP 2009 1 meter resolution.</small></p> <p></p> <table border="1"> <tr> <td>Cartography GLD</td> <td>Date: 3/3/2011</td> <td>Project # 01051-09-004</td> </tr> </table>	Cartography GLD	Date: 3/3/2011	Project # 01051-09-004	<p>Figure 2-5 Project Study Boundary</p> <hr/> <p>Project: City of Arcata Rail-with-Trail Connectivity Project</p> <hr/> <p> WINZLER & KELLY 633 3RD ST EUREKA, CA 95521 P: 707-443-8326 F: 707-444-8330</p>
Cartography GLD	Date: 3/3/2011	Project # 01051-09-004					



<p>Study Area</p> <p>Property Line</p> <p>Alignment Study Segments</p>	<p>City Boundary</p> <p>City Parks</p> <p>Coastal Zone</p> <p>HBNWR</p> <p>Creeks</p>	<p>Page 6 of 28</p>	<p>0 25 50 100 Ft</p> <p>1 inch = 100 feet printed at 8.5x11</p> <p>Sources: City of Arcata GIS - 1 ft resolution aerials, Streets Parks, Landmarks, City Boundary; Humboldt County GIS - Coastal Zone, HBNWR boundaries, and Aerial NAIP 2009 1 meter resolution.</p> <p>Cartography: GLD</p> <p>Date: 3/3/2011</p> <p>Project #: 01051-09-004</p>	<p>Figure 2-6 Project Study Boundary</p> <p>Project: City of Arcata Rail-with-Trail Connectivity Project</p> <p>WINZLER & KELLY</p> <p>633 3RD ST EUREKA, CA 95521 P: 707-443-8326 F: 707-444-8330</p>
---	--	---------------------	---	--

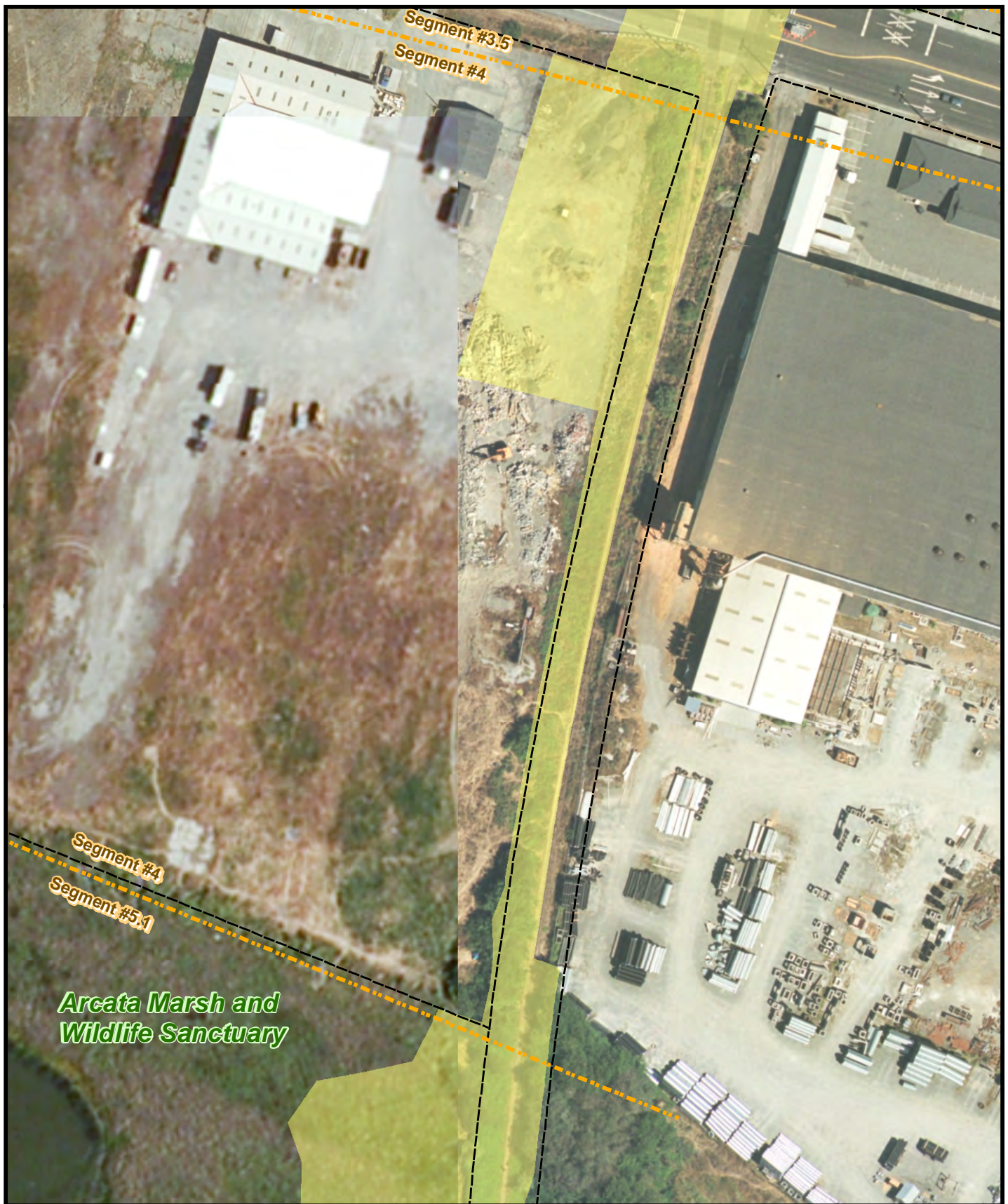




<p> Study Area</p> <p> Property Line</p> <p> Alignment Study Segments</p>	<p> City Boundary</p> <p> City Parks</p> <p> Coastal Zone</p> <p> HBNWR</p> <p> Creeks</p>	<p>Page 8 of 28</p>	<p>0 25 50 100 Ft</p> <p>1 inch = 100 feet printed at 8.5x11</p> <p><small>Sources: City of Arcata GIS - 1 ft resolution aerials, Streets Parks, Landmarks, City Boundary; Humboldt County GIS - Coastal Zone, HBNWR boundaries, and Aerial NAIP 2009 1 meter resolution.</small></p> <p> N</p> <table border="1"> <tr> <td>Cartography GLD</td> <td>Date: 3/3/2011</td> <td>Project # 01051-09-004</td> </tr> </table>	Cartography GLD	Date: 3/3/2011	Project # 01051-09-004	<p>Figure 2-8 Project Study Boundary</p> <p>Project: City of Arcata Rail-with-Trail Connectivity Project</p> <p> WINZLER & KELLY</p> <p>633 3RD ST EUREKA, CA 95521 P: 707-443-8326 F: 707-444-8330</p>
Cartography GLD	Date: 3/3/2011	Project # 01051-09-004					



<p> Study Area</p> <p> Property Line</p> <p> Alignment Study Segments</p>	<p> City Boundary</p> <p> City Parks</p> <p> Coastal Zone</p> <p> HBNWR</p> <p> Creeks</p>	<p>Page 9 of 28</p>	<p>0 25 50 100 Ft</p> <p>1 inch = 100 feet printed at 8.5x11</p> <p><small>Sources: City of Arcata GIS - 1 ft resolution aerials, Streets Parks, Landmarks, City Boundary; Humboldt County GIS - Coastal Zone, HBNWR boundaries, and Aerial NAIP 2009 1 meter resolution.</small></p> <p> N</p> <table border="1"> <tr> <td>Cartography GLD</td> <td>Date: 3/3/2011</td> <td>Project # 01051-09-004</td> </tr> </table>	Cartography GLD	Date: 3/3/2011	Project # 01051-09-004	<p>Figure 2-9 Project Study Boundary</p> <p>Project: City of Arcata Rail-with-Trail Connectivity Project</p> <p> WINZLER & KELLY</p> <p>633 3RD ST EUREKA, CA 95521 P: 707-443-8326 F: 707-444-8330</p>
Cartography GLD	Date: 3/3/2011	Project # 01051-09-004					



**Arcata Marsh and
Wildlife Sanctuary**

- Study Area
- Property Line
- Alignment Study Segments
- City Boundary
- City Parks
- Coastal Zone
- HBNWR
- Creeks

Page 10 of 28



0 25 50 100 Ft
1 inch = 100 feet printed at 8.5x11

Sources: City of Arcata GIS - 1 ft resolution aerials, Streets
Parks, Landmarks, City Boundary; Humboldt County GIS -
Coastal Zone, HBNWR boundaries, and Aerial NAIP 2009
1 meter resolution.



Cartography
GLD

Date:
3/3/2011

Project #
01051-09-004

**Figure 2-10
Project Study Boundary**

Project:
City of Arcata
Rail-with-Trail Connectivity Project

WINZLER & KELLY

633 3RD ST
EUREKA, CA 95521
P: 707-443-8326 F: 707-444-8330

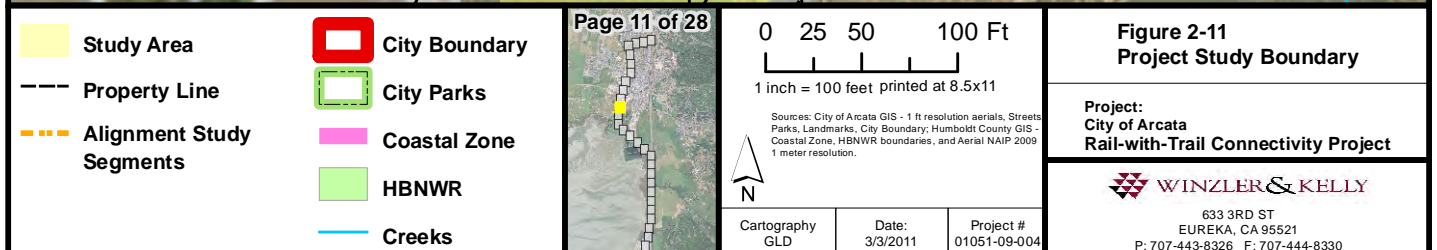


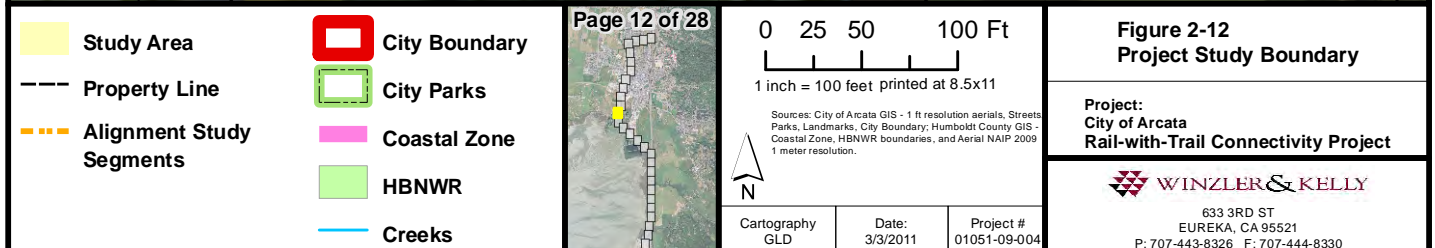
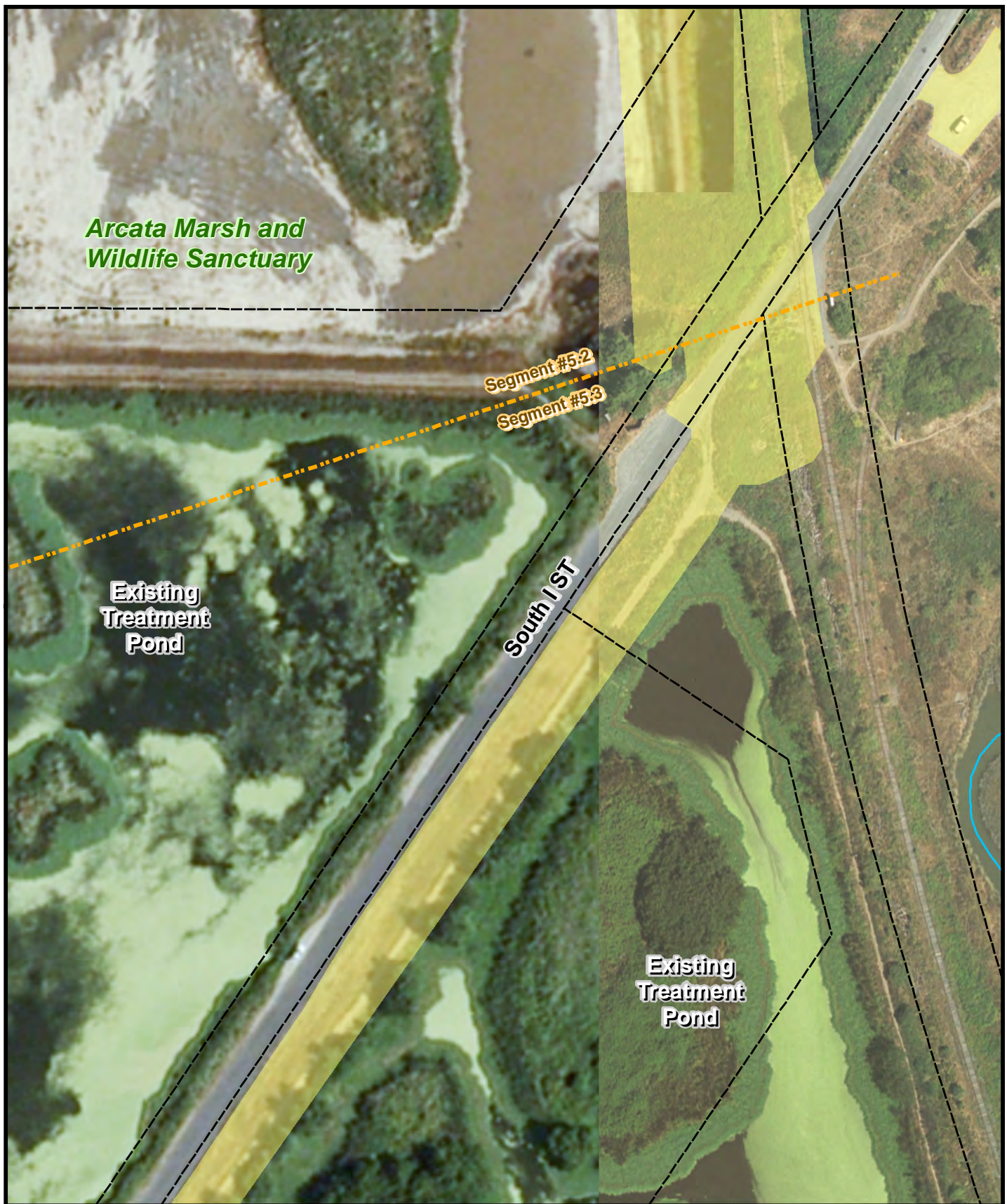
Arcata Marsh and Wildlife Sanctuary

Segment #5.1

Segment #5.2

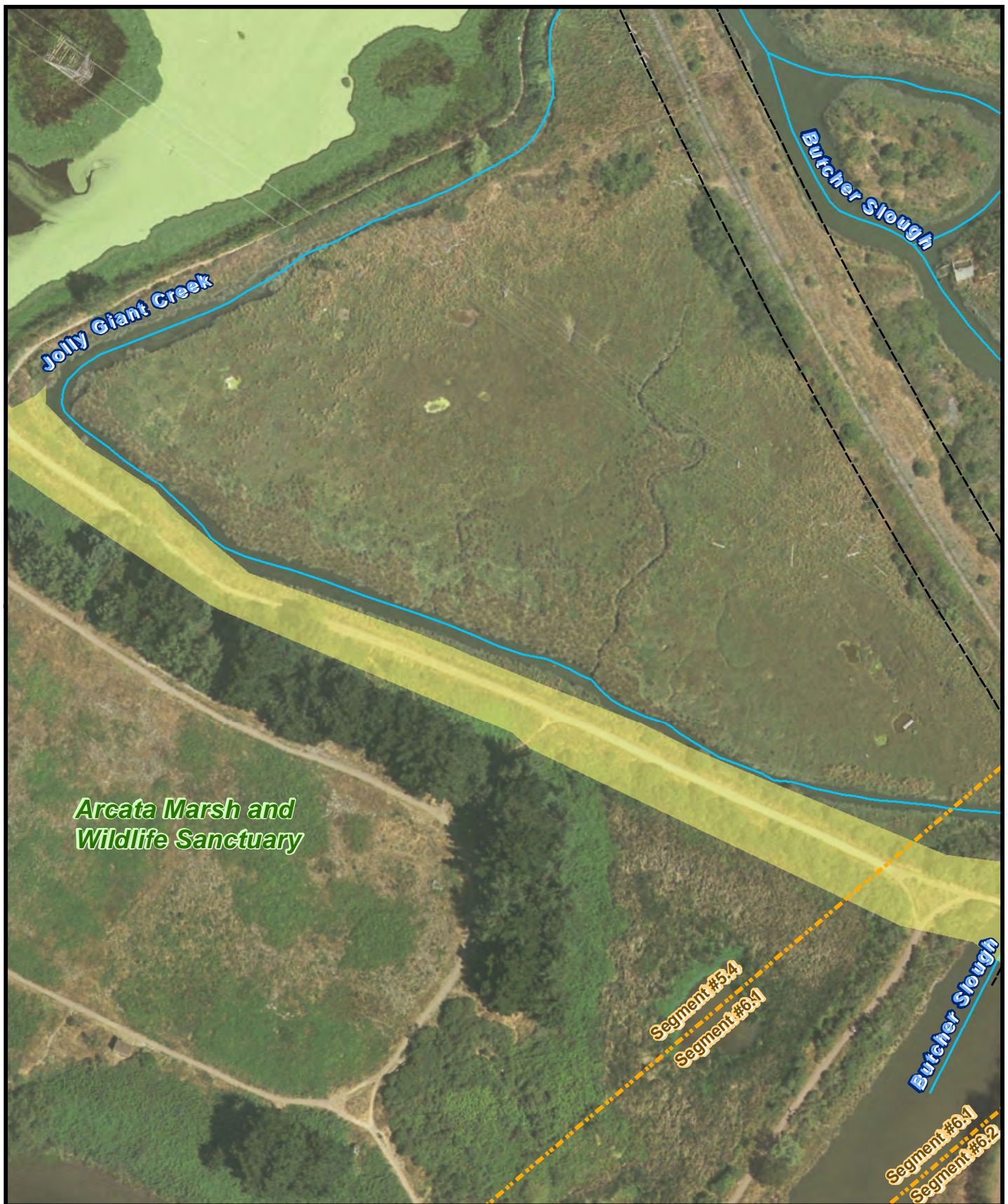
South I ST



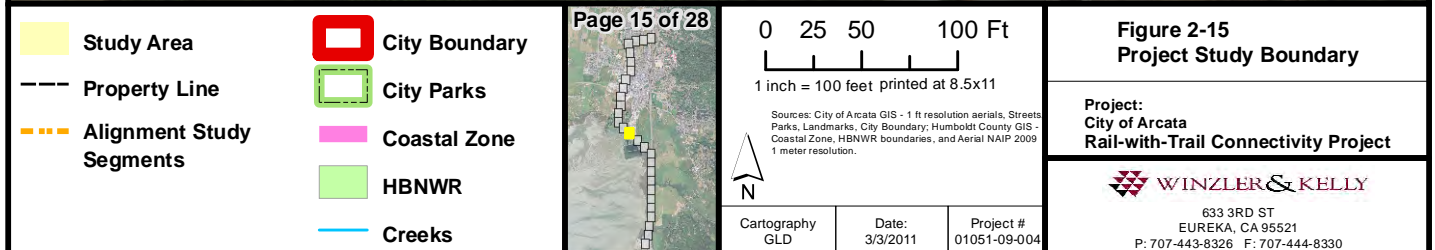


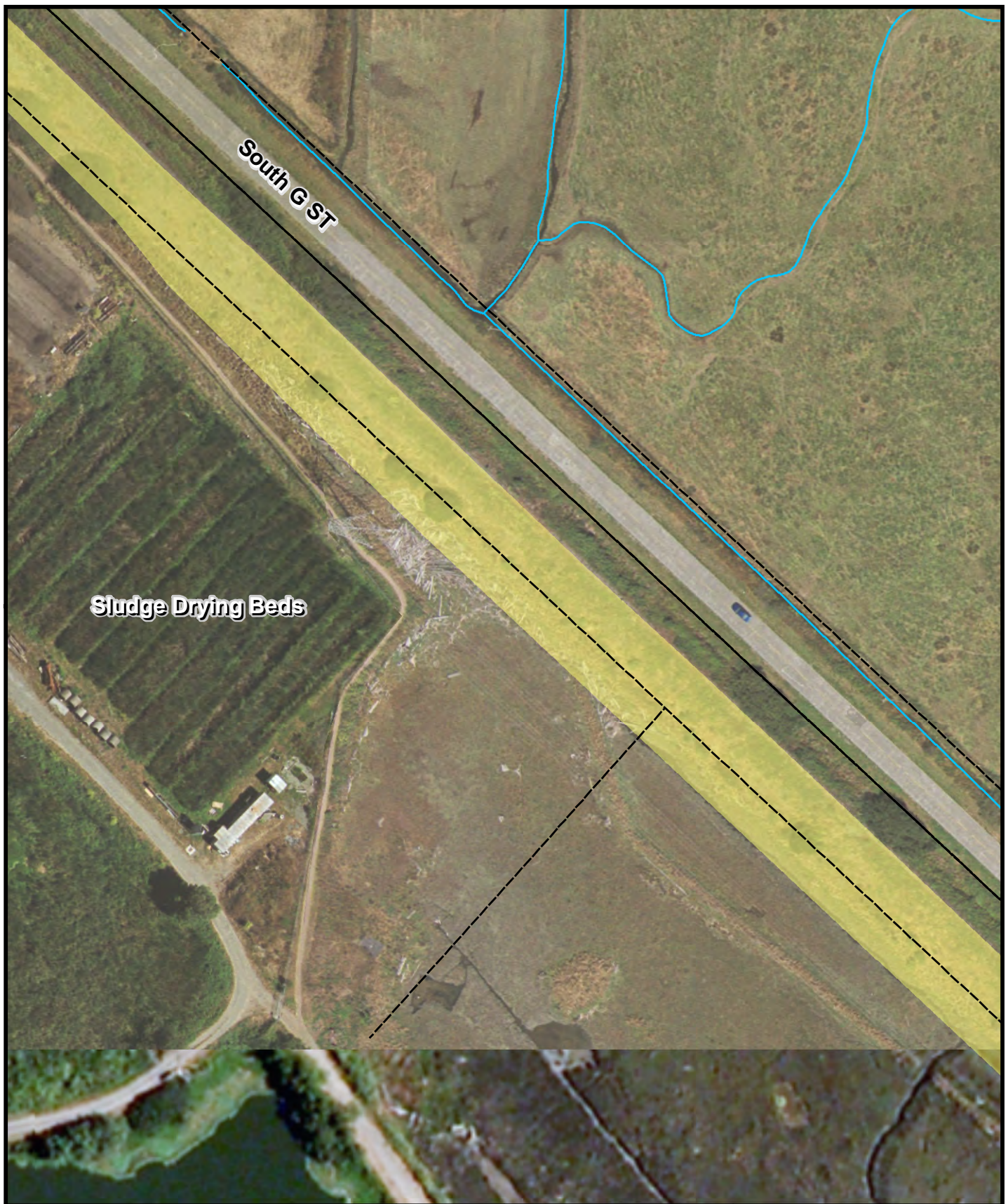


<p>Study Area</p> <p>Property Line</p> <p>Alignment Study Segments</p>	<p>City Boundary</p> <p>City Parks</p> <p>Coastal Zone</p> <p>HBNWR</p> <p>Creeks</p>	<p>Page 13 of 28</p>	<p>0 25 50 100 Ft</p> <p>1 inch = 100 feet printed at 8.5x11</p> <p>Sources: City of Arcata GIS - 1 ft resolution aerials, Streets Parks, Landmarks, City Boundary; Humboldt County GIS - Coastal Zone, HBNWR boundaries, and Aerial NAIP 2009 1 meter resolution.</p> <p>Cartography: GLD</p> <p>Date: 3/3/2011</p> <p>Project #: 01051-09-004</p>	<p>Figure 2-13</p> <p>Project Study Boundary</p> <p>Project: City of Arcata Rail-with-Trail Connectivity Project</p> <p>WINZLER & KELLY</p> <p>633 3RD ST EUREKA, CA 95521 P: 707-443-8326 F: 707-444-8330</p>
---	--	----------------------	---	--



<p>Study Area</p> <p>Property Line</p> <p>Alignment Study Segments</p>	<p>City Boundary</p> <p>City Parks</p> <p>Coastal Zone</p> <p>HBNWR</p> <p>Creeks</p>	<p>Page 14 of 28</p>	<p>0 25 50 100 Ft</p> <p>1 inch = 100 feet printed at 8.5x11</p> <p>Sources: City of Arcata GIS - 1 ft resolution aerials, Streets Parks, Landmarks, City Boundary; Humboldt County GIS - Coastal Zone, HBNWR boundaries, and Aerial NAIP 2009 1 meter resolution.</p> <p>Cartography: GLD</p> <p>Date: 3/3/2011</p> <p>Project #: 01051-09-004</p>	<p>Figure 2-14</p> <p>Project Study Boundary</p> <p>Project: City of Arcata Rail-with-Trail Connectivity Project</p> <p>WINZLER & KELLY</p> <p>633 3RD ST EUREKA, CA 95521 P: 707-443-8326 F: 707-444-8330</p>
---	--	----------------------	---	--





<p> Study Area</p> <p> Property Line</p> <p> Alignment Study Segments</p>	<p> City Boundary</p> <p> City Parks</p> <p> Coastal Zone</p> <p> HBNWR</p> <p> Creeks</p>	<p>Page 16 of 28</p>	<p>0 25 50 100 Ft</p> <p>1 inch = 100 feet printed at 8.5x11</p> <p>Sources: City of Arcata GIS - 1 ft resolution aerials, Streets Parks, Landmarks, City Boundary; Humboldt County GIS - Coastal Zone, HBNWR boundaries, and Aerial NAIP 2009 1 meter resolution.</p> <p> N</p> <table border="1"> <tr> <td>Cartography GLD</td> <td>Date: 3/3/2011</td> <td>Project # 01051-09-004</td> </tr> </table>	Cartography GLD	Date: 3/3/2011	Project # 01051-09-004	<p>Figure 2-16 Project Study Boundary</p> <hr/> <p>Project: City of Arcata Rail-with-Trail Connectivity Project</p> <hr/> <p> WINZLER & KELLY</p> <p>633 3RD ST EUREKA, CA 95521 P: 707-443-8326 F: 707-444-8330</p>
Cartography GLD	Date: 3/3/2011	Project # 01051-09-004					



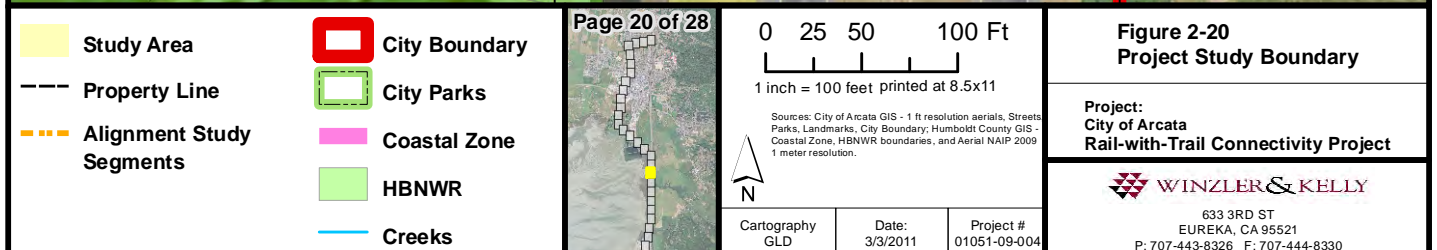
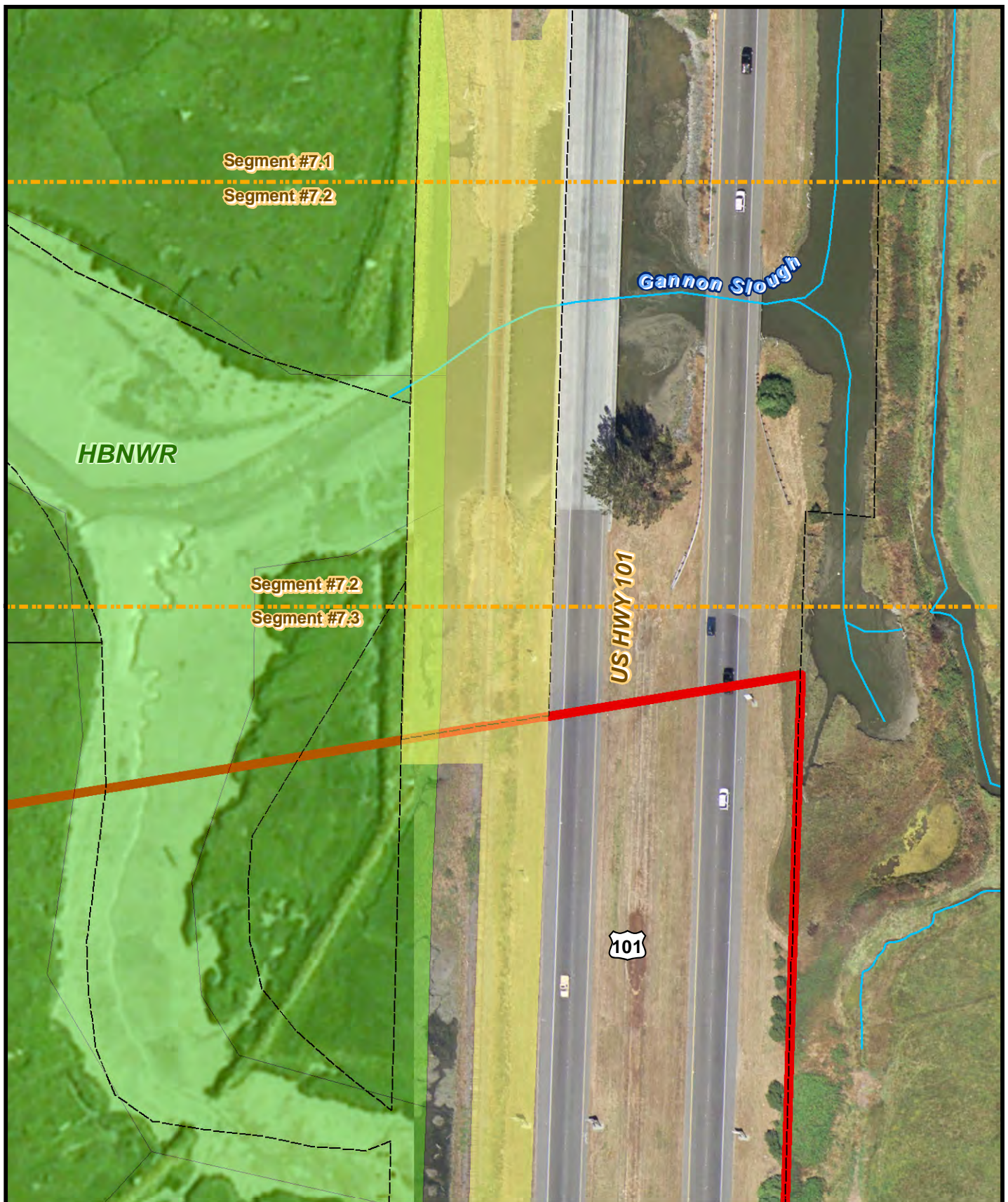
<p> Study Area</p> <p> Property Line</p> <p> Alignment Study Segments</p>	<p> City Boundary</p> <p> City Parks</p> <p> Coastal Zone</p> <p> HBNWR</p> <p> Creeks</p>	<p>Page 17 of 28</p>	<p>0 25 50 100 Ft</p> <p>1 inch = 100 feet printed at 8.5x11</p> <p><small>Sources: City of Arcata GIS - 1 ft resolution aerials, Streets Parks, Landmarks, City Boundary; Humboldt County GIS - Coastal Zone, HBNWR boundaries, and Aerial NAIP 2009 1 meter resolution.</small></p> <p></p> <table border="1"> <tr> <td>Cartography GLD</td> <td>Date: 3/3/2011</td> <td>Project # 01051-09-004</td> </tr> </table>	Cartography GLD	Date: 3/3/2011	Project # 01051-09-004	<p>Figure 2-17 Project Study Boundary</p> <hr/> <p>Project: City of Arcata Rail-with-Trail Connectivity Project</p> <hr/> <p> WINZLER & KELLY</p> <p>633 3RD ST EUREKA, CA 95521 P: 707-443-8326 F: 707-444-8330</p>
Cartography GLD	Date: 3/3/2011	Project # 01051-09-004					



<p>Study Area</p> <p>Property Line</p> <p>Alignment Study Segments</p>	<p>City Boundary</p> <p>City Parks</p> <p>Coastal Zone</p> <p>HBNWR</p> <p>Creeks</p>	<p>Page 18 of 28</p>	<p>0 25 50 100 Ft</p> <p>1 inch = 100 feet printed at 8.5x11</p> <p>Sources: City of Arcata GIS - 1 ft resolution aerials, Streets Parks, Landmarks, City Boundary; Humboldt County GIS - Coastal Zone, HBNWR boundaries, and Aerial NAIP 2009 1 meter resolution.</p> <p>N</p>	<p>Figure 2-18 Project Study Boundary</p> <p>Project: City of Arcata Rail-with-Trail Connectivity Project</p> <p>WINZLER & KELLY 633 3RD ST EUREKA, CA 95521 P: 707-443-8326 F: 707-444-8330</p>
		<p>Cartography GLD</p>	<p>Date: 3/3/2011</p>	<p>Project # 01051-09-004</p>

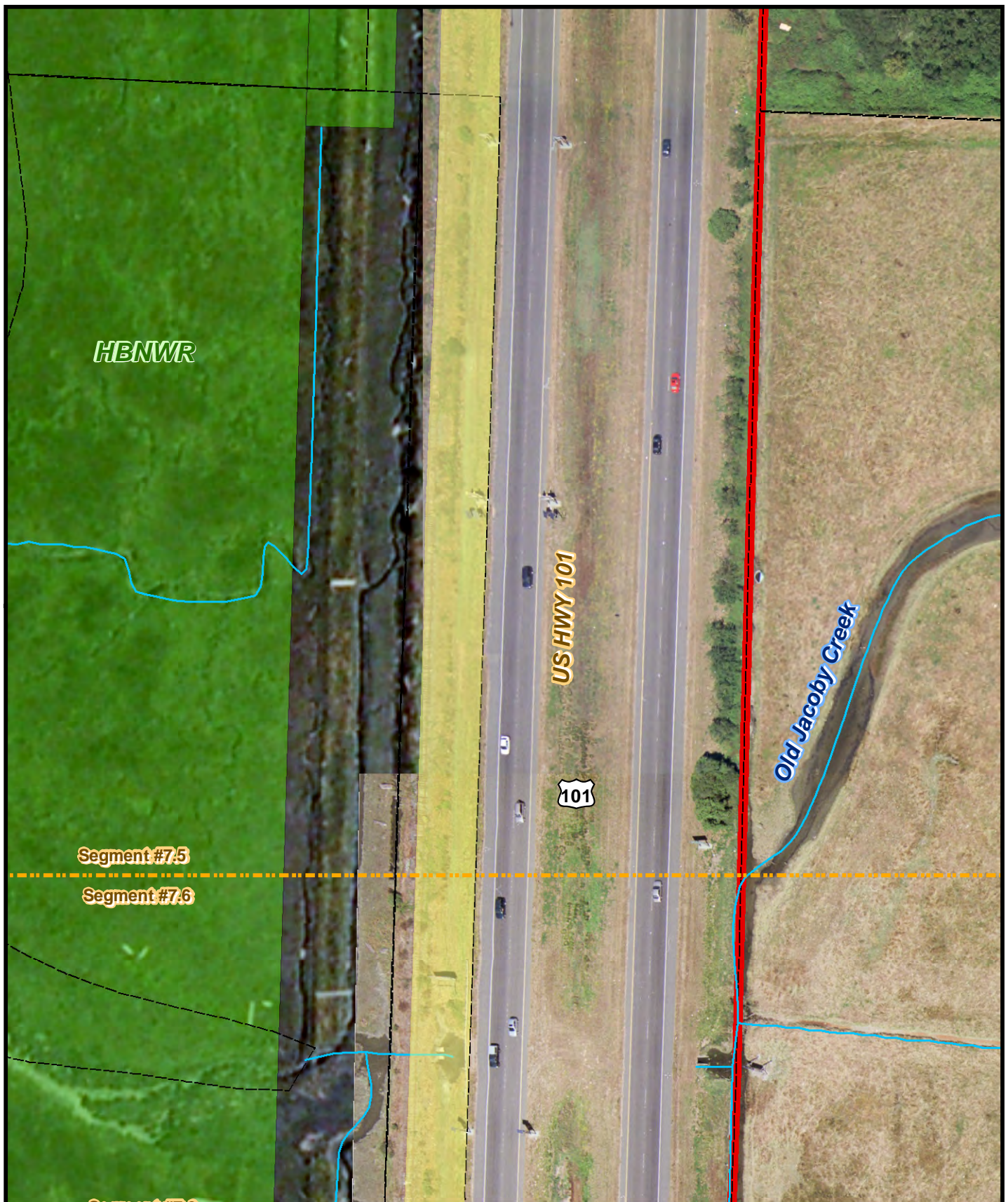


<p> Study Area</p> <p> Property Line</p> <p> Alignment Study Segments</p>	<p> City Boundary</p> <p> City Parks</p> <p> Coastal Zone</p> <p> HBNWR</p> <p> Creeks</p>	<p>Page 19 of 28</p>	<p>0 25 50 100 Ft</p> <p>1 inch = 100 feet printed at 8.5x11</p> <p>Sources: City of Arcata GIS - 1 ft resolution aerials, Streets Parks, Landmarks, City Boundary; Humboldt County GIS - Coastal Zone, HBNWR boundaries, and Aerial NAIP 2009 1 meter resolution.</p> <p></p> <table border="1"> <tr> <td>Cartography GLD</td> <td>Date: 3/3/2011</td> <td>Project # 01051-09-004</td> </tr> </table>	Cartography GLD	Date: 3/3/2011	Project # 01051-09-004	<p>Figure 2-19 Project Study Boundary</p> <p>Project: City of Arcata Rail-with-Trail Connectivity Project</p> <p> WINZLER & KELLY 633 3RD ST EUREKA, CA 95521 P: 707-443-8326 F: 707-444-8330</p>
Cartography GLD	Date: 3/3/2011	Project # 01051-09-004					

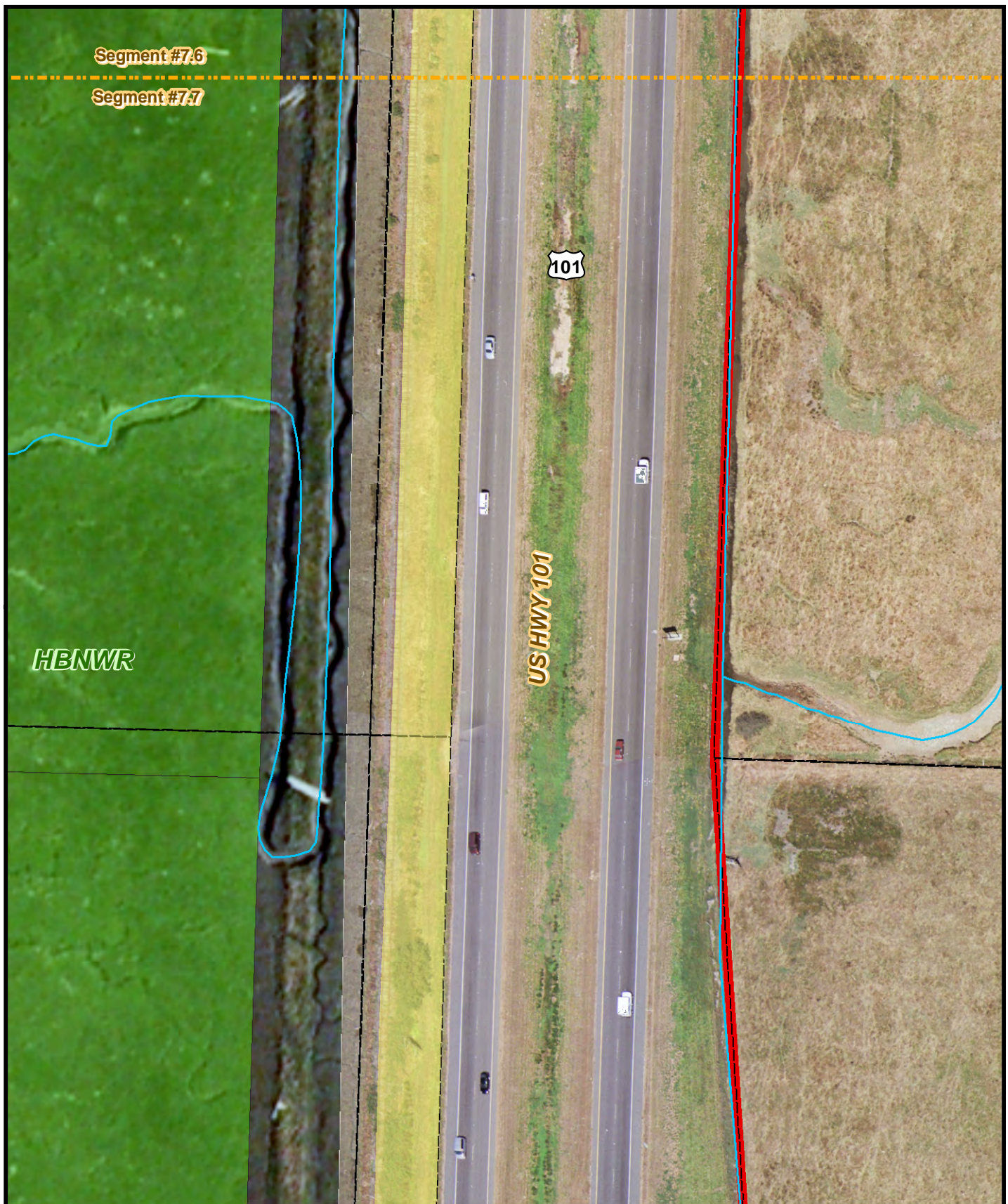




<p>Study Area</p> <p>Property Line</p> <p>Alignment Study Segments</p>	<p>City Boundary</p> <p>City Parks</p> <p>Coastal Zone</p> <p>HBNWR</p> <p>Creeks</p>	<p>Page 21 of 28</p>	<p>0 25 50 100 Ft</p> <p>1 inch = 100 feet printed at 8.5x11</p> <p>Sources: City of Arcata GIS - 1 ft resolution aerials, Streets Parks, Landmarks, City Boundary; Humboldt County GIS - Coastal Zone, HBNWR boundaries, and Aerial NAIP 2009 1 meter resolution.</p> <p>Cartography: GLD</p> <p>Date: 3/3/2011</p> <p>Project #: 01051-09-004</p>	<p>Figure 2-21</p> <p>Project Study Boundary</p> <p>Project: City of Arcata Rail-with-Trail Connectivity Project</p> <p>WINZLER & KELLY</p> <p>633 3RD ST EUREKA, CA 95521 P: 707-443-8326 F: 707-444-8330</p>
---	--	----------------------	---	--



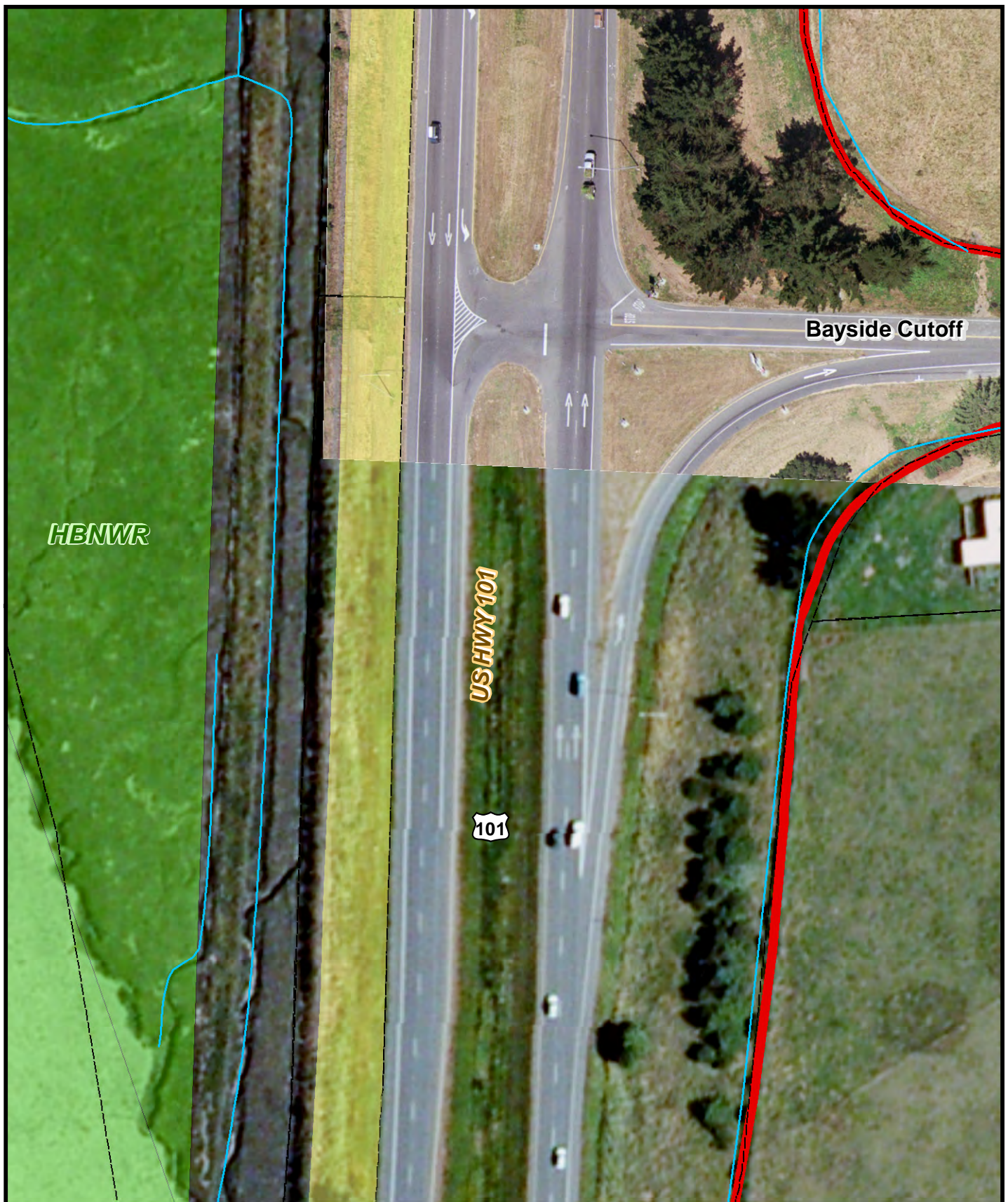
<p> Study Area</p> <p> Property Line</p> <p> Alignment Study Segments</p>	<p> City Boundary</p> <p> City Parks</p> <p> Coastal Zone</p> <p> HBNWR</p> <p> Creeks</p>	<p>Page 22 of 28</p>	<p>0 25 50 100 Ft</p> <p>1 inch = 100 feet printed at 8.5x11</p> <p><small>Sources: City of Arcata GIS - 1 ft resolution aerials, Streets Parks, Landmarks, City Boundary; Humboldt County GIS - Coastal Zone, HBNWR boundaries, and Aerial NAIP 2009 1 meter resolution.</small></p> <p></p> <table border="1"> <tr> <td>Cartography GLD</td> <td>Date: 3/3/2011</td> <td>Project # 01051-09-004</td> </tr> </table>	Cartography GLD	Date: 3/3/2011	Project # 01051-09-004	<p>Figure 2-22 Project Study Boundary</p> <hr/> <p>Project: City of Arcata Rail-with-Trail Connectivity Project</p> <hr/> <p> WINZLER & KELLY 633 3RD ST EUREKA, CA 95521 P: 707-443-8326 F: 707-444-8330</p>
Cartography GLD	Date: 3/3/2011	Project # 01051-09-004					



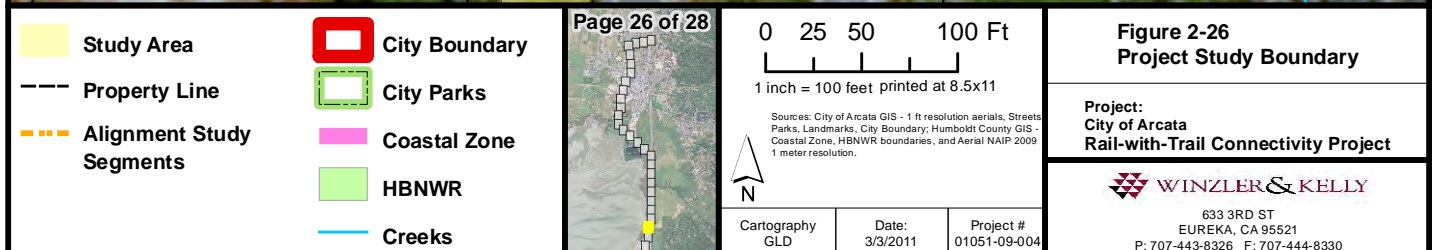
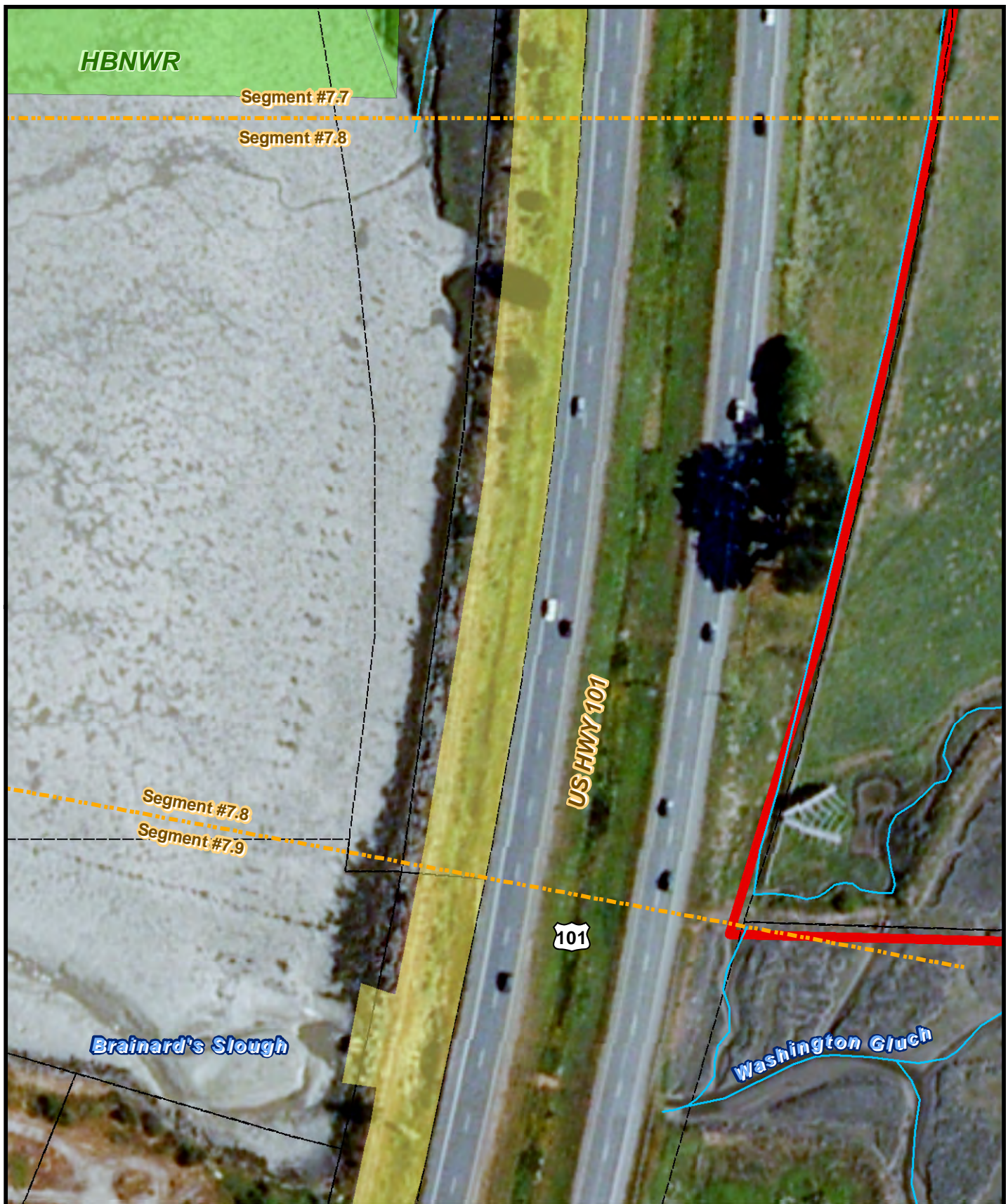
<p>Study Area</p> <p>Property Line</p> <p>Alignment Study Segments</p>	<p>City Boundary</p> <p>City Parks</p> <p>Coastal Zone</p> <p>HBNWR</p> <p>Creeks</p>	<p>Page 23 of 28</p>	<p>0 25 50 100 Ft</p> <p>1 inch = 100 feet printed at 8.5x11</p> <p>Sources: City of Arcata GIS - 1 ft resolution aerials, Streets Parks, Landmarks, City Boundary; Humboldt County GIS - Coastal Zone, HBNWR boundaries, and Aerial NAIP 2009 1 meter resolution.</p> <p>Cartography GLD</p> <p>Date: 3/3/2011</p> <p>Project # 01051-09-004</p>	<p>Figure 2-23 Project Study Boundary</p> <p>Project: City of Arcata Rail-with-Trail Connectivity Project</p> <p>WINZLER & KELLY</p> <p>633 3RD ST EUREKA, CA 95521 P: 707-443-8326 F: 707-444-8330</p>
---	--	----------------------	--	---

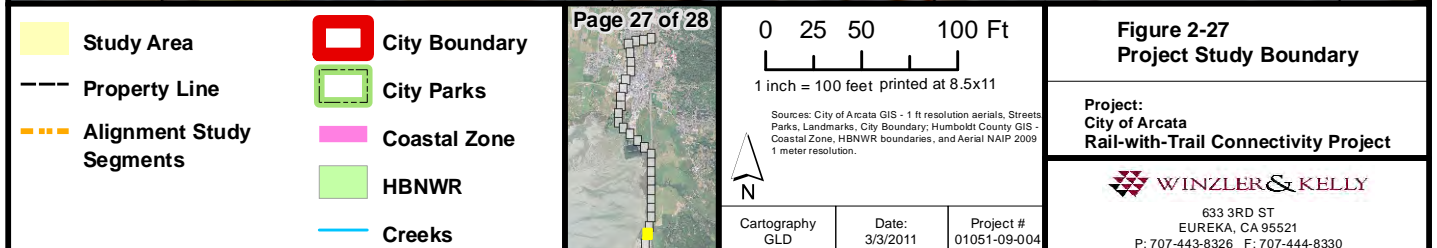


<p> Study Area</p> <p> Property Line</p> <p> Alignment Study Segments</p>	<p> City Boundary</p> <p> City Parks</p> <p> Coastal Zone</p> <p> HBNWR</p> <p> Creeks</p>	<p>Page 24 of 28</p>	<p>0 25 50 100 Ft</p> <p>1 inch = 100 feet printed at 8.5x11</p> <p>Sources: City of Arcata GIS - 1 ft resolution aerials, Streets Parks, Landmarks, City Boundary; Humboldt County GIS - Coastal Zone, HBNWR boundaries, and Aerial NAIP 2009 1 meter resolution.</p> <p></p> <table border="1"> <tr> <td>Cartography GLD</td> <td>Date: 3/3/2011</td> <td>Project # 01051-09-004</td> </tr> </table>	Cartography GLD	Date: 3/3/2011	Project # 01051-09-004	<p>Figure 2-24 Project Study Boundary</p> <hr/> <p>Project: City of Arcata Rail-with-Trail Connectivity Project</p> <hr/> <p> WINZLER & KELLY 633 3RD ST EUREKA, CA 95521 P: 707-443-8326 F: 707-444-8330</p>
Cartography GLD	Date: 3/3/2011	Project # 01051-09-004					






<p>Study Area</p> <p>Property Line</p> <p>Alignment Study Segments</p>	<p>City Boundary</p> <p>City Parks</p> <p>Coastal Zone</p> <p>HBNWR</p> <p>Creeks</p>	<p>Page 25 of 28</p>	<p>0 25 50 100 Ft</p> <p>1 inch = 100 feet printed at 8.5x11</p> <p>Sources: City of Arcata GIS - 1 ft resolution aerials, Streets Parks, Landmarks, City Boundary; Humboldt County GIS - Coastal Zone, HBNWR boundaries, and Aerial NAIP 2009 1 meter resolution.</p> <p>Cartography GLD</p> <p>Date: 3/3/2011</p> <p>Project # 01051-09-004</p>	<p>Figure 2-25</p> <p>Project Study Boundary</p> <p>Project:</p> <p>City of Arcata</p> <p>Rail-with-Trail Connectivity Project</p> <p>WINZLER & KELLY</p> <p>633 3RD ST EUREKA, CA 95521 P: 707-443-8326 F: 707-444-8330</p>
---	--	----------------------	---	--







<p> Study Area</p> <p> Property Line</p> <p> Alignment Study Segments</p>	<p> City Boundary</p> <p> City Parks</p> <p> Coastal Zone</p> <p> HBNWR</p> <p> Creeks</p>	<p>Page 28 of 28</p> 	<p>0 25 50 100 Ft</p> <p>1 inch = 100 feet printed at 8.5x11</p> <p><small>Sources: City of Arcata GIS - 1 ft resolution aerials, Streets Parks, Landmarks, City Boundary; Humboldt County GIS - Coastal Zone, HBNWR boundaries, and Aerial NAIP 2009 1 meter resolution.</small></p> <p></p> <table border="1"> <tr> <td>Cartography GLD</td> <td>Date: 3/3/2011</td> <td>Project # 01051-09-004</td> </tr> </table>	Cartography GLD	Date: 3/3/2011	Project # 01051-09-004	<p>Figure 2-28 Project Study Boundary</p> <p>Project: City of Arcata Rail-with-Trail Connectivity Project</p> <p> WINZLER & KELLY</p> <p>633 3RD ST EUREKA, CA 95521 P: 707-443-8326 F: 707-444-8330</p>
Cartography GLD	Date: 3/3/2011	Project # 01051-09-004					